



Tabor Grove, SW19

£950,000

Dexters



Tabor Grove, SW19

An opportunity to purchase an exquisitely presented, split level Victorian maisonette, in a cul-de-sac. The property has three/ four bedrooms, two bathrooms and been tastefully extended and refurbished.

The property its own front garden and front door. The first floor has a generously sized kitchen/breakfast room to the rear, a double bedroom complete with floor to ceiling wardrobes, a reception room with exposed brick fireplace and a separate study/ bedroom four.

The loft has been converted with stairs leading to a large second floor, offering a double bedroom to the rear with eaves storage, followed by a breathtaking principal suite with extremely high ceilings, a walk in wardrobe, a large three piece ensuite shower room with double sink and a lantern, alongside an abundance of storage throughout.

In addition to the bedrooms and bathroom to the second floor, the vendors have cleverly housed a utility room, avoiding the task of taking washing up and down the stairs. Ideal for every home owner.

Tabor Grove is a quiet cul-de-sac, in the heart of Wimbledon, just walking distance from Wimbledon Village, Wimbledon Common and Wimbledon Broadway. Extremely good transport links and amenities are nearby.

Features

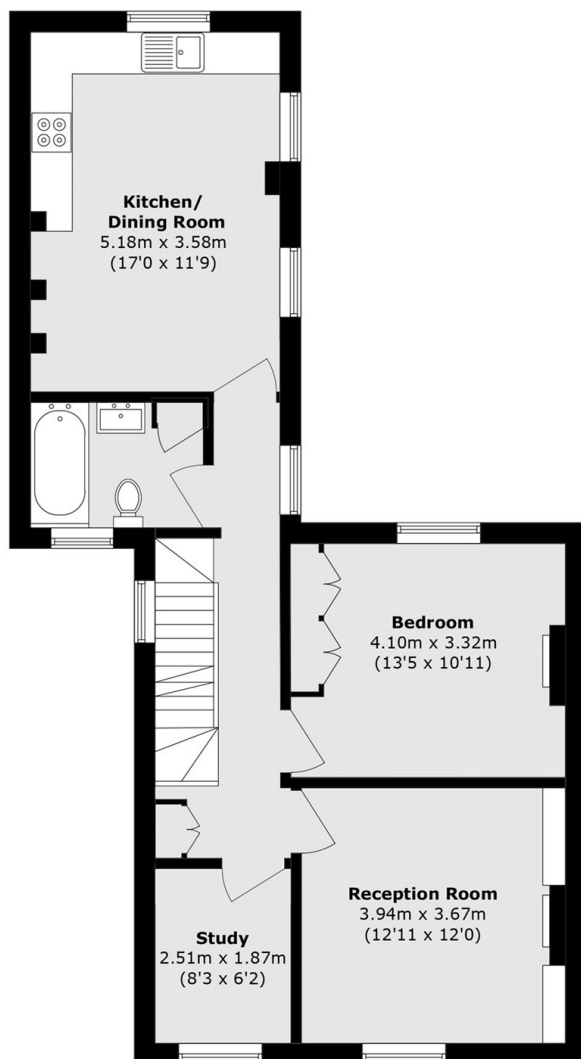
- Three/Four Bedrooms
- Near 1300 Square Feet
- Two Bathrooms
- Split Level
- Victorian Maisonette
- Separate Study



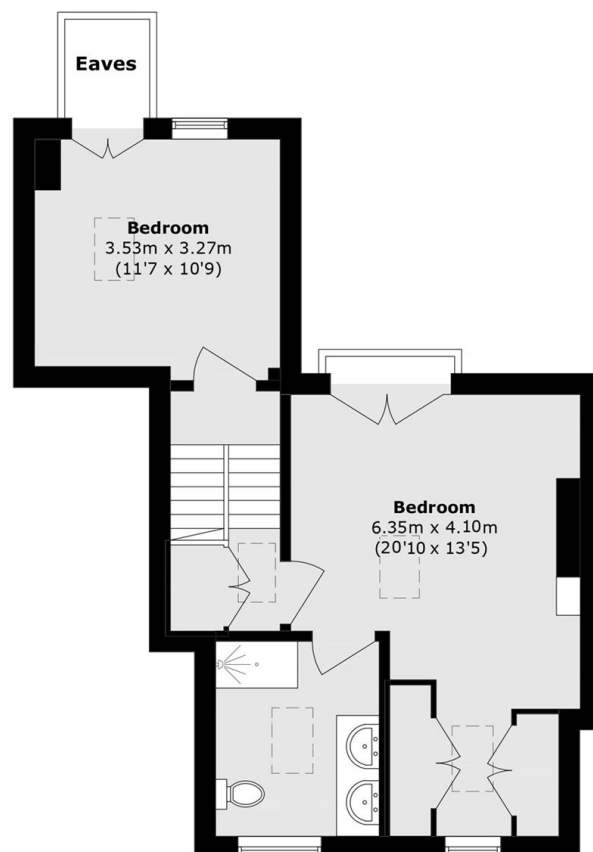




Tabor Grove, London, SW19



Ground Floor



Second Floor

First Floor

Total area (approx.): 116.9 sq. m (1258.3 sq. ft)
(Excluding Eaves)