



Drayton Gardens, W13

£999,999

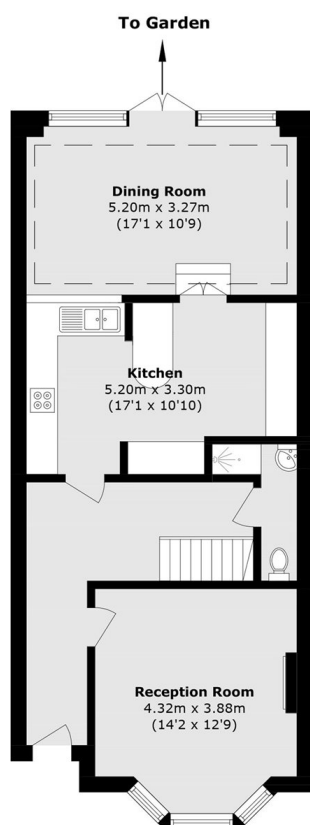
This charming Victorian mid terrace home has been thoughtfully extended on the ground floor, offering a cosy front reception room and a spacious open-plan kitchen/dining room to the rear. Arranged over the first and second floors are four bedrooms, three bathrooms, and a separate study, creating a versatile family home.

Located in the popular Drayton's residential area known for its strong community feel and 2 mins from West Ealing Elizabeth Line station, linking Bond Street in fourteen minutes, thirteen to Heathrow Airport and approximately thirty to Canary Wharf. There are Outstanding local schools, both state and private and nursery choices nearby.

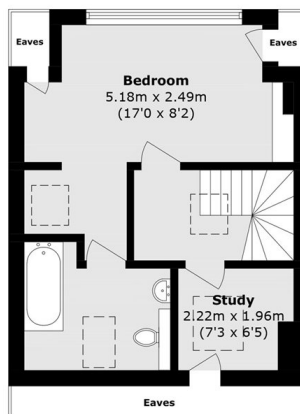
Features

- Four Bedrooms
- Three Bathrooms
- Two Reception Rooms
- Extended Ground and Loft
- Close To Station/ Park
- Outstanding Local Schools

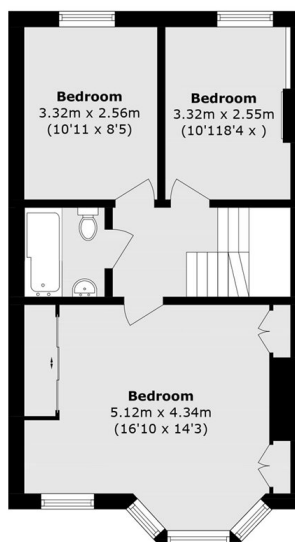
Drayton Gardens, London, W13



Ground Floor



Second Floor



First Floor

Total area (approx.): 145.7 sq. m (1568.3 sq. ft)
(Excluding Eaves)