



The Bungalow, Marlow Court, 221 Willesden Lane

London NW6

£625,000



The Bungalow, Marlow Court

221 Willesden Lane, London NW6

A fantastic and unique bungalow of 850sq ft surrounded by communal gardens set on the grounds of this quiet and peaceful purpose-built block.

Council Tax band: D

Tenure: Leasehold

EPC Energy Efficiency Rating: D

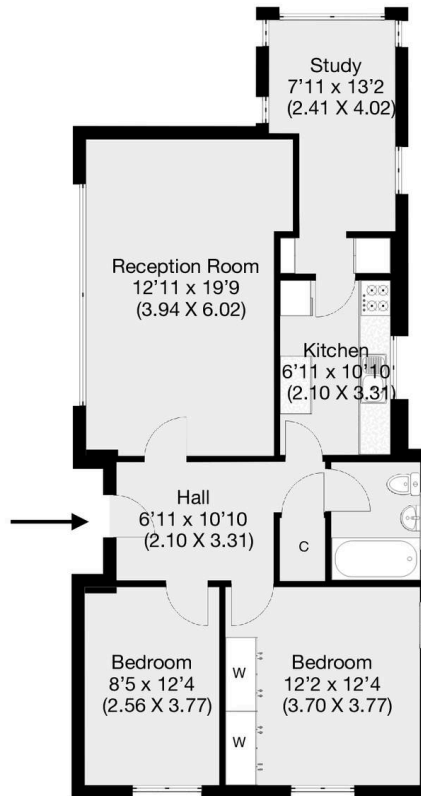
EPC Environmental Impact Rating:





Willesden Lane, London, NW6

Approximate Gross Internal Area 79 sqm / 850 sqft



Ground Floor

THIS FLOOR PLAN IS PRODUCED FOR GARRISON ESTATES SUBMITTED BY ARCHIMEDIA web: www.archi-media.co.uk

Whilst every attempt has been made to ensure the accuracy of the floor plan contained here, measurements of doors, windows and rooms are approximate and no responsibility is taken for any error, omission or misstatement. These plans are for representation purposes only and should be used as such by any prospective buyer or lease. Specifically no guarantee is given on the gross internal floor area of the property if quoted on this plan and any figures given is initial guidance only and should be treated as such.



Garrison Estates

20 College Parade, Salusbury Road, Queens Park - NW6 6RN

020 4511 4820 • contact@garrisonestates.co.uk • www.garrisonestates.co.uk/