



**Guide Price**  
**£240,000**

**Leasehold**

1x  1x  1x 

**Deepdene House,  
Deepdene Avenue,  
Dorking, Surrey, RH5**

**OVER 60?**

Secure this property  
for up to **59% less!**

**cubitt & west**  
Helping you move forwards



## Main features

- Sought-after Hopewood Park development
- Close to Dorking town center & mainline train stations
- Allocated parking and visitor bays
- Stylish open plan kitchen/dining/living area
- Private patio and extensive communal gardens

## Accommodation

### GROUND FLOOR

Lounge: 15'5 x 11'5 (4.70m x 3.48m)

Kitchen Area: 12'5 x 6'6 (3.79m x 1.98m)

Bedroom: 11'6 x 8'9 (3.51m x 2.67m)

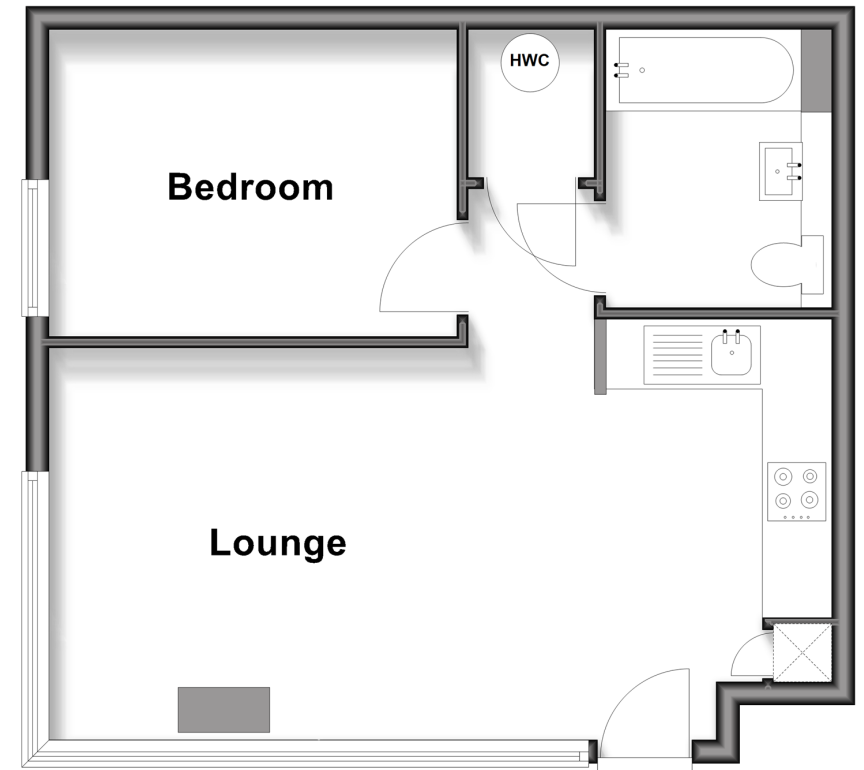
Bathroom

### OUTSIDE

- Private Patio
- Allocated Parking Space
- Communal Garden

## Ground Floor

Approx. 40.5 sq. metres (436.0 sq. feet)



**Call Dorking - 01306 883399 ■ [cubittandwest.co.uk](http://cubittandwest.co.uk)**

- Legal advice should be taken to verify fixtures/fittings, planning, alterations and/or lease details
- Appliances & services are untested, dimensions are approximate and floor plans are not to scale
- Through a Homewise Home For Life Plan people aged 60+ can secure this property for up to 59% less, by purchasing a Lifetime Lease



20511567/20260317/SB/SB