



River Lime House Blackwater Mews, Steeple SOUTHMINSTER CM0 7LX



welcome to

River Lime House Blackwater Mews, Steeple SOUTHMINSTER

** GUIDE PRICE £450,000 - £475,000 ** STUNNING COUNTRYSIDE VIEWS. This well presented LINKED DETACHED FIVE BEDROOM THREE BATHROOM home, set over three floors, occupying an ENVIABLE POSITION BACKING ONTO FARMLAND within the picturesque village of Steeple, further benefits from GARAGE & CARPORT.



Entrance Porch

Covered porch area, part glazed composite front door leading to:-

Entrance Hall

Double glazed PVC window to side.

Cloakroom

Part tiled with low level WC, floating basin with storage, heated towel rail, double glazed UPVC window to rear.

Lounge

17' 4" x 10' 2" Plus Recess (5.28m x 3.10m Plus Recess)
Double glazed UPVC window rear, radiator, French doors leading to garden, open wood burner fireplace with surround.

Dining Room

10' 3" x 7' 11" (3.12m x 2.41m)
Double glazed UPVC window to front, radiator.

Kitchen

9' 8" x 9' 8" (2.95m x 2.95m)
Double glazed UPVC window to rear, radiator, UPVC door leading to garden. Kitchen comprising of a combination of wall and base units, one and half bowl sink set in roll top surfaces, integrated hob on kitchen island, integrated fridge freezer, dishwasher and oven.

Utility Room

9' 6" Max x 6' 1" (2.90m Max x 1.85m)
Comprising of wall units, in set sink on laminated roll top surfaces, double glazed UPVC window to front and radiator.

First Floor

Landing

Double glazed UPVC window overlooking fields, airing cupboard, carpeted and radiator.

Bedroom One

15' 7" x 10' 4" (4.75m x 3.15m)
Double glazed UPVC window to rear, balcony with French doors, radiator, built in wardrobes, door leading to:-

Ensuite

Fully tiled, white suite comprising of walk in shower, low level WC and floating basin.

Bedroom Two

11' 1" x 9' 11" Plus Recess (3.38m x 3.02m Plus Recess)
Dual aspect double UPVC windows to front and rear, radiator.

Bedroom Three

10' 1" Plus Recess x 7' 5" (3.07m Plus Recess x 2.26m)
Double glazed UPVC window to front, radiator.

Bedroom Four

10' 4" x 6' 6" (3.15m x 1.98m)
UPVC window to front, radiator

Bathroom

Tiled walls, three piece white suite comprising of low level WC, shower over bath, floating hand basin, UPVC window to rear.

Second Floor

Bedroom Five

19' x 9' 8" (5.79m x 2.95m)
Fitted wardrobes, skylight windows, door leading to:-

Ensuite

Three piece suite, heated towel rail, panel bath and skylight.

Outside

Rear Garden

Indian sandstone patio, laid to lawn with mature shrub borders and flower beds, overlooking fields, pergola, low rear fence.

Parking

Driveway / carport



view this property online williamhbrown.co.uk/Property/MLN104847



welcome to

River Lime House Blackwater Mews, Steeple SOUTHMINSTER

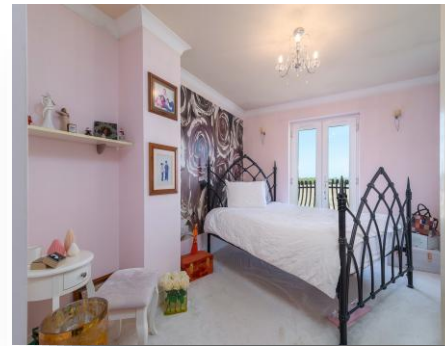
- Chain Free
- Bathroom and Two Ensuities
- Quiet Cul-De-Sac Location
- Overlooking Farmers Fields
- Garage & Carport

Tenure: Freehold EPC Rating: Awaiting

Council Tax Band: E

guide price

£450,000 - £475,000



Please note the marker reflects the
postcode not the actual property

view this property online [williamhbrown.co.uk/Property/MLN104847](https://www.williamhbrown.co.uk/Property/MLN104847)



Property Ref:
MLN104847 - 0004

1. MONEY LAUNDERING REGULATIONS Intending purchasers will be asked to produce identification documentation at a later stage and we would ask for your co-operation in order that there is no delay in agreeing the sale. 2. These particulars do not constitute part or all of an offer or contract. 3. The measurements indicated are supplied for guidance only and as such must be considered incorrect. Potential buyers are advised to recheck measurements before committing to any expense. 4. We have not tested any apparatus, equipment, fixtures or services and it is in the buyers interest to check the working condition of any appliances. 5. Where an EPC, or a Home Report (Scotland only) is held for this property, it is available for inspection at the branch by appointment. If you require a printed version of a Home Report, you will need to pay a reasonable production charge reflecting printing and other costs. 6. We are not able to offer an opinion either written or verbal on the content of these reports and this must be obtained from your legal representative. 7. Whilst we take care in preparing these reports, a buyer should ensure that his/her legal representative confirms as soon as possible all matters relating to title including the extent and boundaries of the property and other important matters before exchange of contracts.

William H Brown is a trading name of Sequence (UK) Limited which is registered in England and Wales under company number 4268443, Registered Office is Cumbria House, 16-20 Hockliffe Street, Leighton Buzzard, Bedfordshire, LU7 1GN. VAT Registration Number is 500 2481 05.



william h brown



01621 874837



Maldon@williamhbrown.co.uk



3 High Street, West Square, MALDON, Essex,
CM9 5PB



[williamhbrown.co.uk](https://www.williamhbrown.co.uk)