



Sentinel Road

West Hunsbury, Northampton

oriordanbond
SALES & LETTINGS



Sentinel Road

West Hunsbury

NN4 9UF

PRICE £250,000

Offered to the market with no onward chain is this beautifully presented two bedroom semi-detached home, situated in a cul-de-sac, within the desirable area of West Hunsbury. This property has been tastefully modernised by the current owners and offers a stylish and contemporary feel throughout.

The accommodation comprises entrance via a double glazed door, sitting room with stairs to the first floor, a wonderful re-fitted kitchen/dining room with fully integrated appliances to include an oven, hob, extractor, fridge and dishwasher. There are also quartz worktops, space for a dining table and patio doors to the rear garden. To the first floor is access to the loft space, an airing cupboard, two double bedrooms and a fabulous re-fitted bathroom with a shower over the bath. Outside is a lawned front garden with planted borders and a block paved driveway leading to a single garage with an electric door and an EV charging point. The rear garden is westerly facing and has been landscaped to be low maintenance with paved seating areas, raised planted borders, space for a hot tub, a good size shed/utility/bar and enclosed by timber fencing. Further benefits include uPVC double glazing and gas radiator heating. (A/602/M)

Additional information

- Council Tax Band: B
- Energy Efficiency Rating:

Viewing

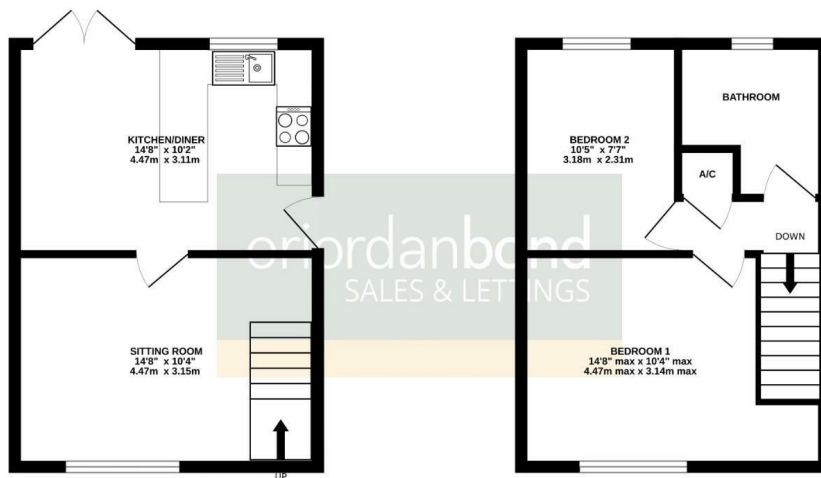
Viewing strictly by appointment – details below

Disclaimer

O’Riordan Bond Estate Agents Limited has not tested apparatus, equipment, fittings or services and so cannot verify they are in working order. The buyer is advised to obtain verification from their solicitor or surveyor.

GROUND FLOOR
301 sq.ft. (28.0 sq.m.) approx.

1ST FLOOR
301 sq.ft. (27.9 sq.m.) approx.



TOTAL FLOOR AREA: 602 sq.ft. (55.9 sq.m.) approx.

Whilst every attempt has been made to ensure the accuracy of the floorplan contained here, measurements of doors, windows, rooms and any other items are approximate and no responsibility is taken for any error, omission or mis-statement. This plan is for illustrative purposes only and should be used as such by any prospective purchaser. The services, systems and appliances shown have not been tested and no guarantee as to their operability or efficiency can be given. Made with Metropix ©2025

O’Riordan Bond Hunsbury Sales

01604 706007

hunsbury@oriordanbond.co.uk

