

The Greenway

Middlesex • • UB8 2PN

PCM: £2,400 PCM



coopers
est 1986

A truly lovely FOUR BEDROOM TWO BATHROOM Family home situated close to Uxbridge Town Centre and a stones throw from Brunel University. Accommodation; Four bedrooms, Family bathroom, Lounge, Dining room, Fully fitted kitchen with appliances. Benefits; Gas central heating, Private rear garden, Off street parking, Large storage space. UNFURNISHED



Four Bedrooms

Two Bathrooms

Detached

Driveway Parking

EPC Rating D

Council Tax Band D

Great Local Transport

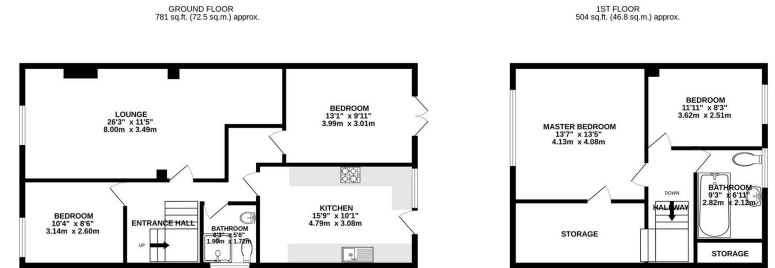
Close to Hillingdon Hospital

Private Garden

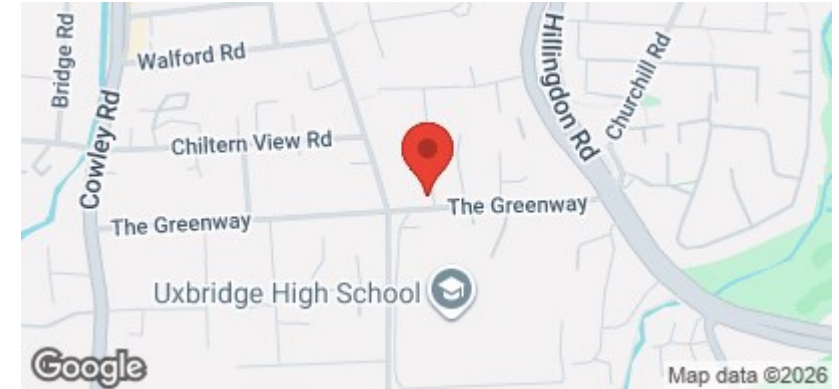
Local Amenities

Available Date

13th March 2026



TOTAL FLOOR AREA: 1264 sq.ft. (119.3 sq.m.) approx.
While every attempt has been made to ensure the accuracy of the floorplan contained herein, measurements of areas, volumes, rooms and any other items are approximate and no responsibility is taken for any error, omission or mis-statement. This plan is for illustrative purposes only and should be used on such by any prospective purchaser. The services, systems and appliances shown have not been tested and no guarantee as to their operability or efficiency can be given.
Made with Mirogno ©2024

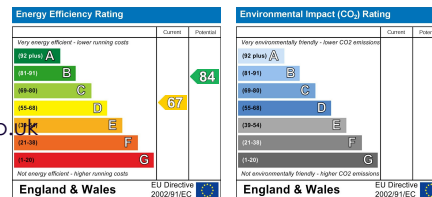


01895 257 566

**1 Vine Street, Uxbridge,
Middlesex, UB8 1QE**

propertymanagement@coopersresidential.co.uk

CoopersResidential.co.uk



Important Notice: These particulars, whilst believed to be accurate are set out as a general outline only for guidance and do not constitute any part of an offer or contract. Intending purchasers should not rely on them as statements or representation of fact, but must satisfy themselves by inspection or otherwise has the authority to make or give any representation or warranty in respect of the property.

coopers
est 1986