



Cloverfields, Thurston, Bury St Edmunds, Suffolk, IP31 3TJ

Rent - £670 PCM Deposit - £772

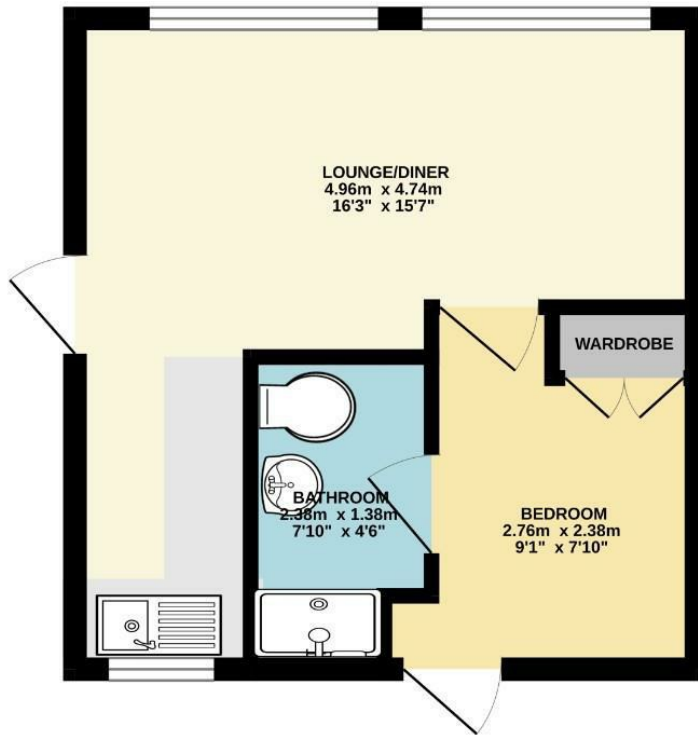
A well-presented one bedroom annex located in the popular village of Thurston, offering comfortable and convenient living. Recently redecorated throughout, the property benefits from fresh neutral décor and new flooring, creating a bright and modern feel throughout. The accommodation offers a good-sized living space, one bedroom, kitchen area, and shower room, making it ideal for a single occupant. Further benefits include air conditioning, providing added comfort all year round.

AGENTS NOTE: Property images may have been digitally enhanced, edited, or virtually staged using artificial intelligence and may not accurately reflect the property's current presentation, condition, furnishings, or contents. Floorplans and measurements are provided for guidance only and should not be relied upon.

- ANNEXE
- 1 BEDROOM
- BEDROOM WITH FITTED WARDROBES
- SHOWER ROOM
- SHORT DRIVE TO BURY ST EDMUNDS
- AIR CON & ENERGY RATING - E
- APPROXIMATE SIZE - 258 SQFT
- AVAILABLE NOW



GROUND FLOOR
23.5 sq.m. (253 sq.ft.) approx.



TOTAL FLOOR AREA: 23.5 sq.m. (253 sq.ft.) approx.
Whilst every attempt has been made to ensure the accuracy of the floorplan contained herein, measurements of doors, windows, rooms and any other items are approximate and no responsibility is taken for any error, omission or mis-statement. This plan is for illustrative purposes only and should be used as such by any prospective purchaser. The services, systems and appliances shown have not been tested and no guarantee as to their operability or efficiency can be given.
Made with Metropix CS028

