

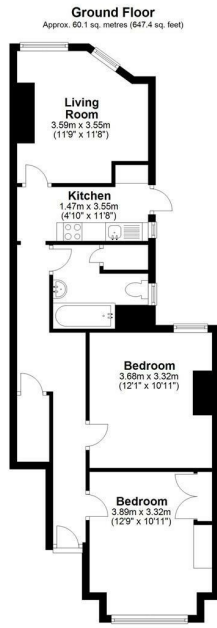


Tynemouth Road, Surrey, CR4 2BQ

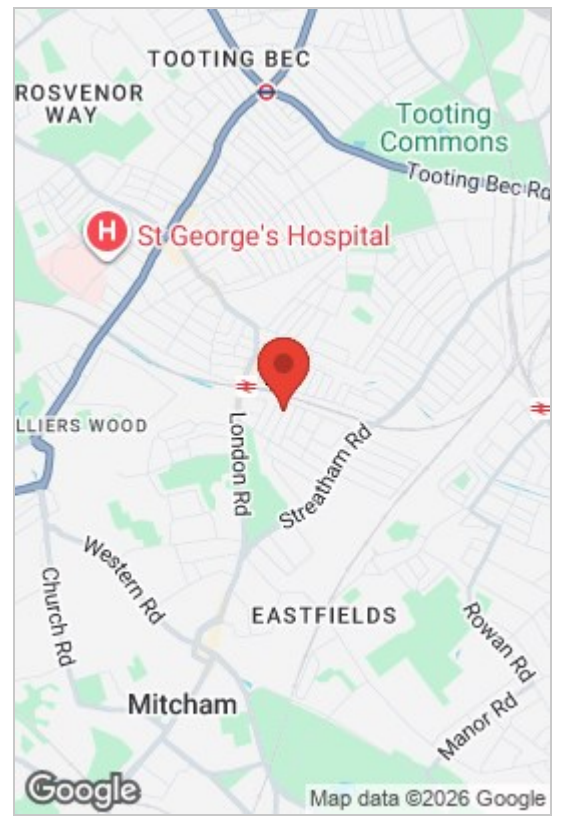
£1,600 Per Week

 2  1  1  C



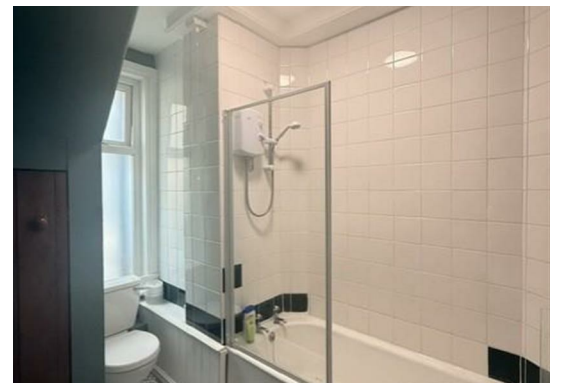


Total area: approx. 60.1 sq. metres (647.4 sq. feet)



- Two Double Bedrooms
- Private Garden
- Excellent Location
- Double Glazing Windows
- Perfect for a Couple or Sharers
- Freshly Painted
- Maisonette
- Ample of Storage
- Wooden Flooring throughout
- Central Heating

Excellent value for money two double spacious ground floor maisonette to rent in Mitcham. Comprising two good-sized double bedrooms, separate living room, modern fitted kitchen with appliances, tiled bathroom suite and a private paved rear garden. Other benefits include gas central heating, double glazed windows and fitted carpet throughout. Located only a short walk away from Tooting Railway Station, local restaurants, shops and amenities. Call us now this could be your new home.



Council Tax Band: C

Energy Efficiency Rating		Environmental Impact (CO ₂) Rating	
Current	Potential	Current	Potential
70	75		

These particulars, whilst believed to be accurate are set out as a general outline only for guidance and do not constitute any part of an offer or contract. Intending purchasers should not rely on them as statements of representation of fact, but must satisfy themselves by inspection or otherwise as to their accuracy. No person in this firm's employment has the authority to make or give any representation or warranty in respect of the property.