



Greenwich High Road, SE10 £500,000

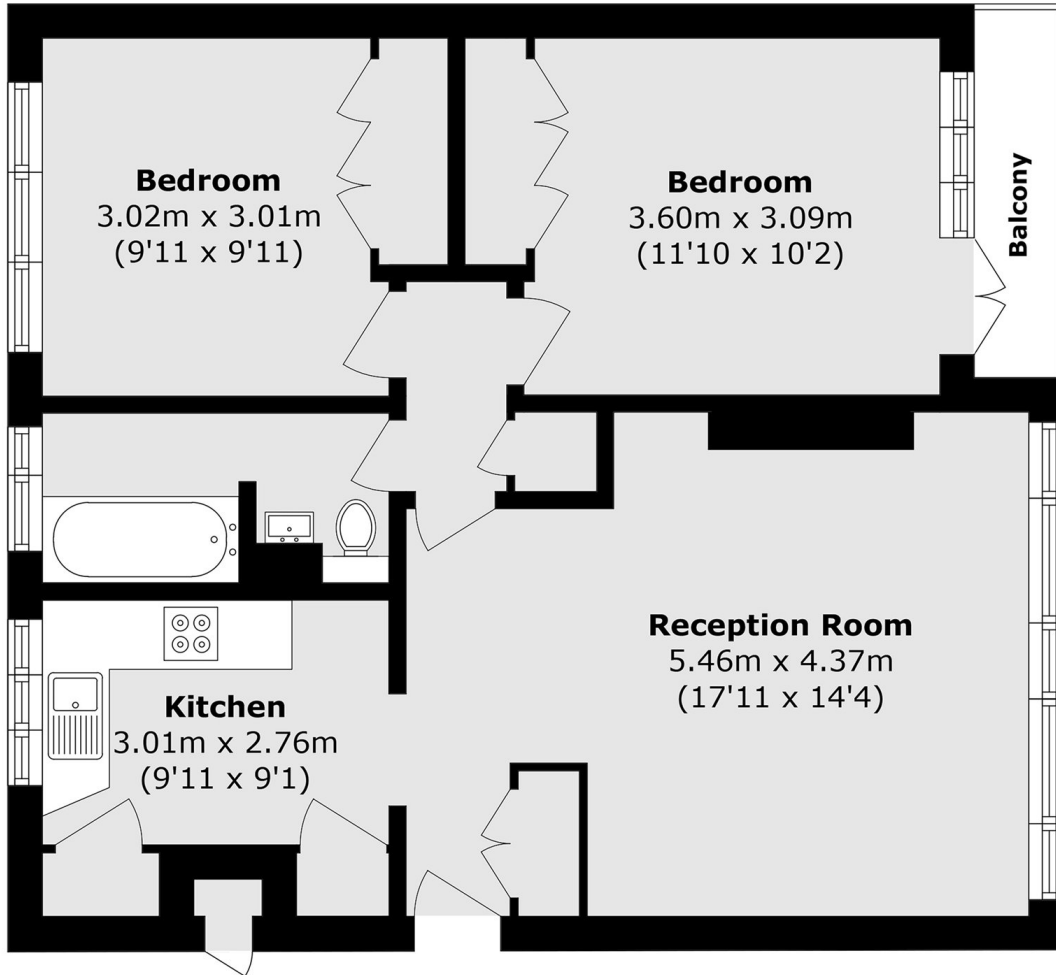
A beautifully presented two bedroom apartment that has been finished to a high standard and benefits from a private balcony and beautifully maintained communal gardens.

Perfectly positioned on Greenwich High Road for all the attractions Royal Greenwich has to offer, moments from both the DLR at Deptford Bridge as well as the DLR and mainline at Greenwich station; giving fast and easy access into both Canary Wharf and the City.

Features

- Chain Free
- Ideal First Purchase or BTL
- Finished To A High Standard
- Modern
- Private Balcony
- Sought After Location

Greenwich High Road,
London, SE10



Total area (approx.): 61.5 sq. m (661.9 sq. ft)
Balcony area (approx.): 2.3 sq. m (24.7 sq. ft)
External Storage area (approx.): 0.6 sq. m (6.4 sq. ft)