



Plot 58 Lichfield, Ashtree Grove, Hampton-In-Arden

£1,400,000

£15,000 Deposit Boost! Situated in the highly sought-after village of Hampton in Arden, The Ashtree Grove development by the renowned David Wilson Homes offers an exceptional opportunity to own a stylish new home. The five-bedroom detached Lichfield is one of a selection of thoughtfully designed house types available. Arranged over three floors, the ground floor features a contemporary kitchen-diner with French doors opening onto a private garden, a spacious lounge, and a convenient guest cloakroom, perfectly designed for modern family living. Get in touch today to arrange your viewing.

Bedrooms: 5 | **Bathrooms:** 3 | **Receptions:** 3

Property Type: Detached House

Bedrooms: 5 | Bathrooms: 3 | Receptions: 1

Get in touch today to arrange your viewing and discover everything this fantastic home has to offer.

This beautifully designed five-bedroom detached home is arranged over three spacious floors, offering flexible living that's ideal for growing families or those looking for additional space to work from home.

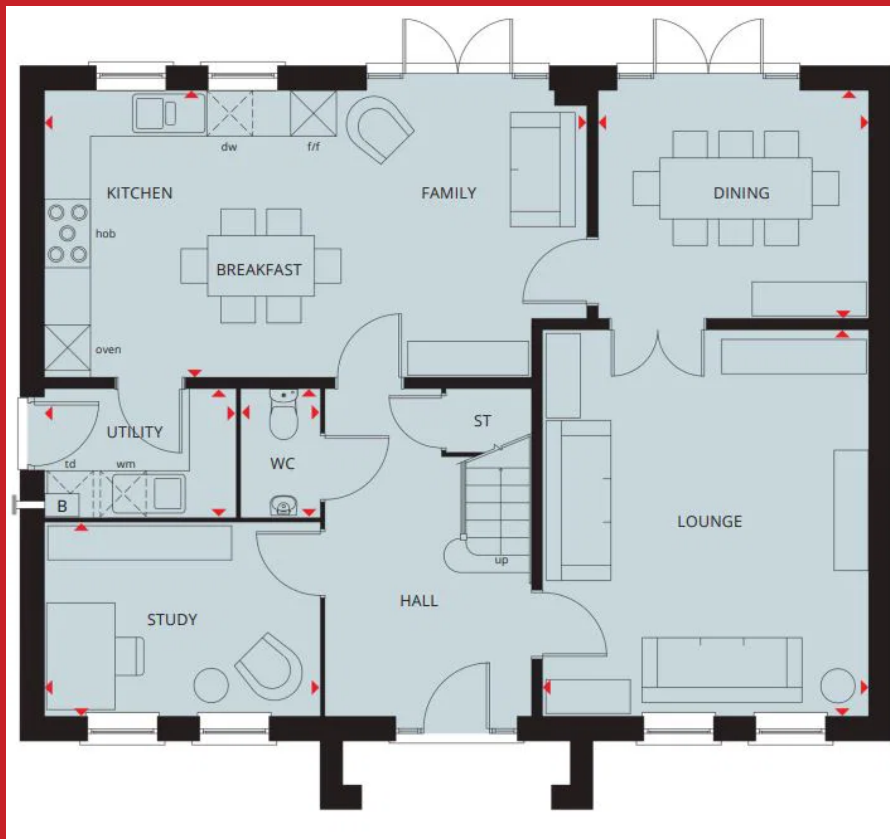
The ground floor features a bright and contemporary kitchen-diner with French doors opening onto the private garden, creating the perfect space for entertaining or enjoying family meals. A separate dining room provides an ideal setting for formal occasions or family gatherings, while the generous lounge also benefits from French doors, filling the room with natural light. A separate utility room, useful storage cupboard, and guest cloakroom complete the ground floor, offering excellent practicality for modern living.

The upper floors provide five well-proportioned bedrooms, including an impressive principal bedroom suite occupying the top floor. This private retreat features a stylish en suite shower room and a dedicated dressing area. The remaining bedrooms are served by a contemporary family bathroom, offering flexible accommodation for families, guests, or home working.

With ample storage throughout, versatile living space, and a thoughtfully designed layout, this exceptional home is perfectly suited to modern lifestyles. Plus, with a £15,000 Deposit Boost available, there's never been a better time to make your move.

Get in touch today to arrange your viewing and discover everything this fantastic home has to offer.





Contact us today!
0121 744 4144 + Option 3
newhomes@smart-homes.co.uk

