



STREATHAM ROAD, SW16

£575,000

- 3 Bedroom Terrace House
- Double reception room
- Galley Style Kitchen
- Large Family Garden
- Sought After Location
- Potential to Extend STPP





ABOUT THE HOME

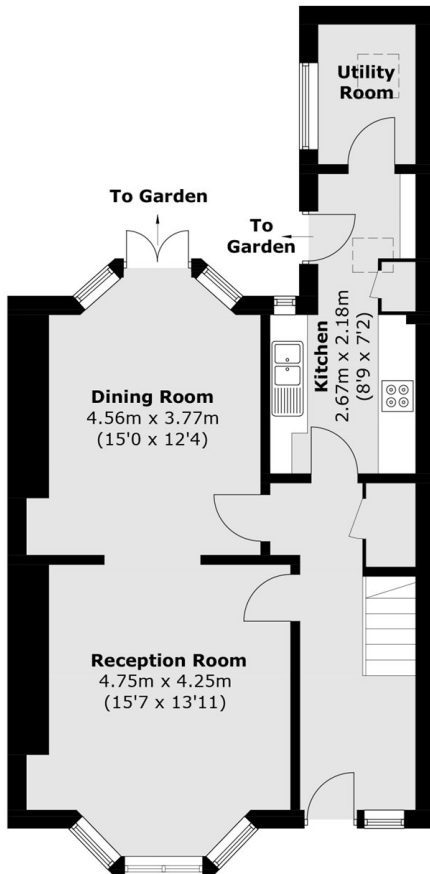
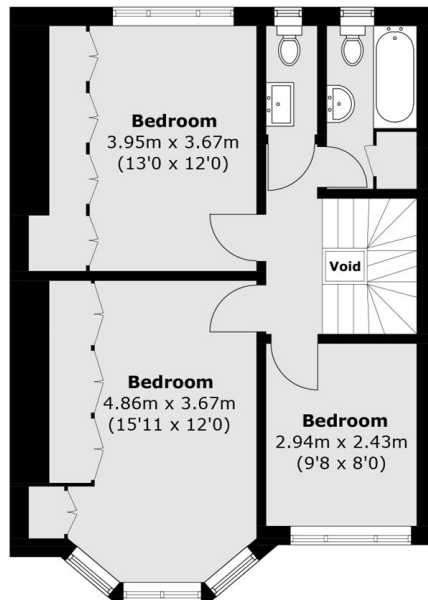
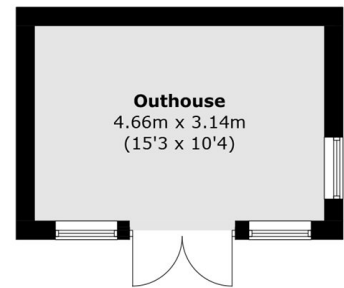
A spacious 3 bedroom terrace house that has been extended on the ground floor. Conveniently located for sought after local schools, excellent transport links and potential to extend further subject to the necessary planning consent being obtained.

Internally the layout comprises; a double reception room / dining room with galley style kitchen, understair storage, a ground floor utility room. French doors lead out to a spacious garden with an amazing garden room / home office space.

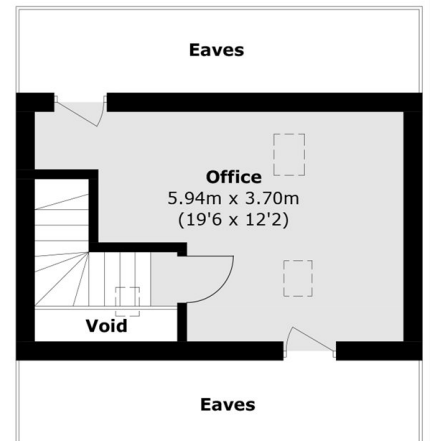
Perfectly positioned on Streatham Road, this SW16 address offers easy access to the vibrant amenities of Streatham, excellent transport links into Central London, and a great selection of local shops, cafés, and green spaces.






Ground Floor

First Floor


(Not Shown In Actual
Location / Orientation)


Second Floor

Total area (approx.): 133.4 sq. m (1,435.9 sq. ft)
 Outhouse: 14.9 sq. m (160.4 sq. ft)
 (Excluding Eaves & Voids)

JACKSONS TOOTING

3 Upper Tooting Road, London,
 SW17 7TS
 Sales: 020 8487 3175
 Lettings: 020 8487 3176

Energy Rating: We aim to make our particulars both accurate and reliable. However they are not guaranteed; nor do they form part of an offer or contract. If you require clarification on any points then please contact us, especially if you're traveling some distance to view. Please note that appliances and heating systems have not been tested and therefore no warranties can be given as to their good working order.