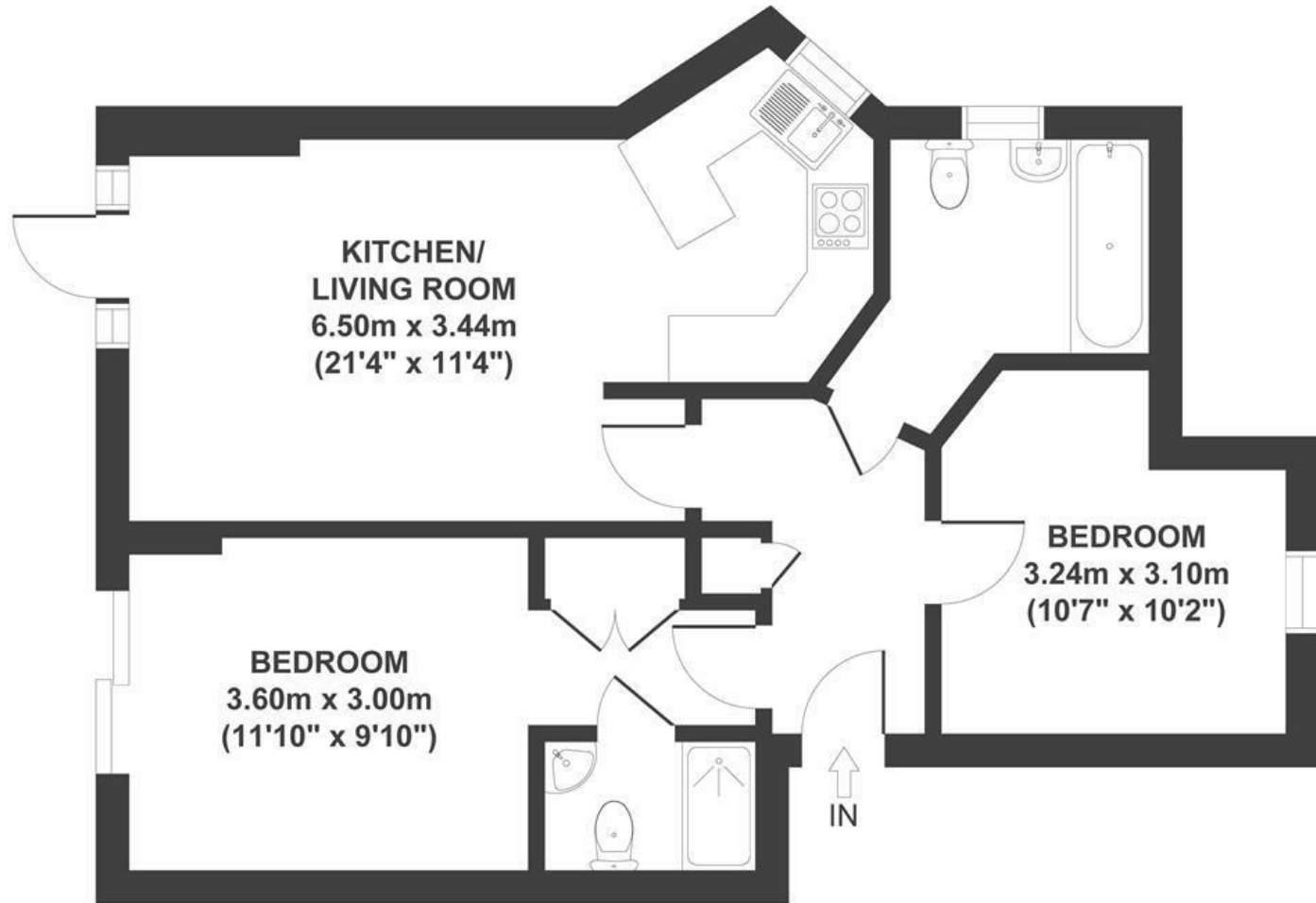


Newland Heights

ST ANDREWS

APPROXIMATE FLOOR AREA
60 SQM / 646 SQFT



Boardwalk

27 Hurlingham , BRISTOL



£355,000



2 Bedrooms



BS7 9AT



2 Bathrooms

"We love spending time on the balcony. It's such a suntrap getting sun all day in the spring/summer months and a great place to enjoy a BBQ with friends or a good book. We love hosting and enjoy the social layout of the flat. We enjoy how quiet the area is but a 10 minute walk can get you to Gloucester Road or Stokes Croft."

