



St. Luke's Avenue, SW4

£3,000 Per calendar month

Dexters



St. Luke's Avenue, SW4

Set within an award winning development, this contemporary two bedroom, two bathroom apartment is immaculately presented throughout. Accommodation includes an open plan reception room and kitchen, underfloor heating, bicycle storage and a concierge.

The building also offers two communal roof terraces, with views of the London skyline.

Located on Clapham High Street with an array of shops, restaurants and bars nearby. There are also excellent transport links via Clapham Common and Clapham North underground stations, along with overground connections via Clapham High Street.

Features

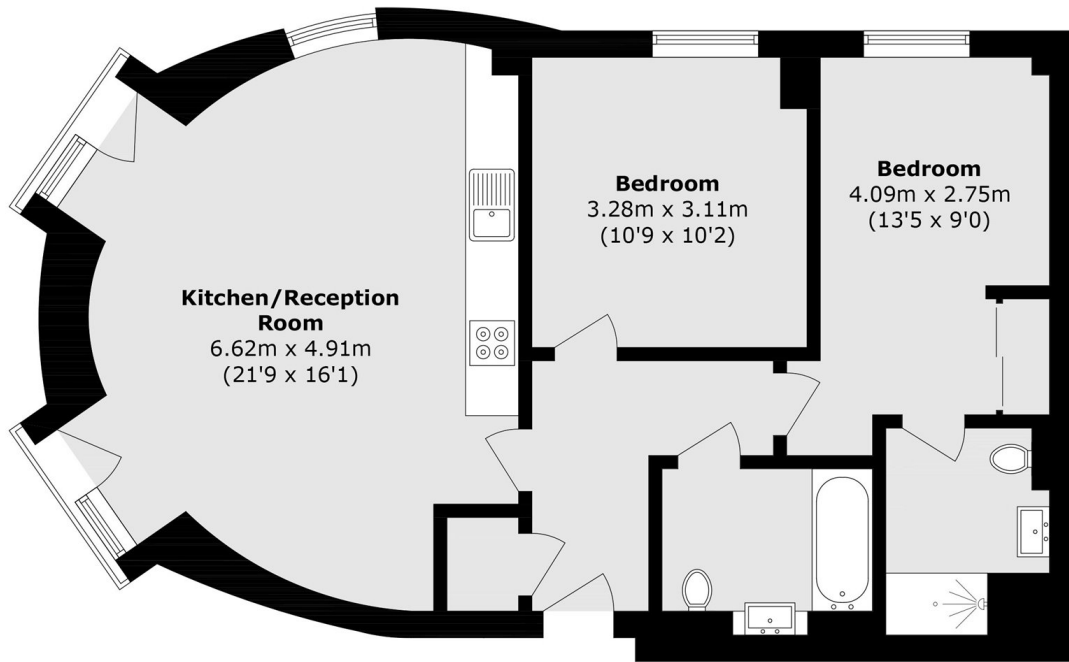
- Two Double Bedrooms
- Two Bathrooms
- Open Plan Reception
- Modern Kitchen
- Two Communal Terraces
- Concierge Service







St. Luke's Avenue, London, SW4



Total area (approx.): 66.3 sq. m (713.6 sq. ft)