



22 Belfry Square, Beggarwood – RG22 4WZ

£315,000 Freehold

Well-presented home in popular Beggarwood • One double and two single bedrooms • Two allocated parking spaces • Two en-suite and ground floor WC • New windows, front door, and patio doors • Low-maintenance garden with patio and artificial grass • Council Tax C • EPC C



01256 321777



www.thepropertyexplorer.co.uk

the property
explorer

EXPLORER are delighted to offer this well-presented home, providing well-planned and versatile accommodation suitable for a range of buyers. The property benefits from one double bedroom and two single bedrooms, two en-suite, a ground floor WC, and two allocated parking spaces.

Council Tax band: C

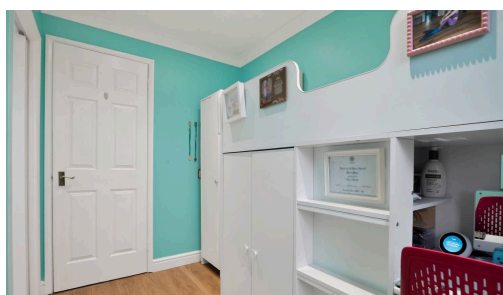
Tenure: Freehold

EPC Energy Efficiency Rating: C

EPC Environmental Impact Rating: C



- Well-presented home in popular Beggarwood
- One double and two single bedrooms
- Two allocated parking spaces
- Two en-suite and ground floor WC
- New windows, front door, and patio doors
- Low-maintenance garden with patio and artificial grass
- Council Tax C
- EPC C

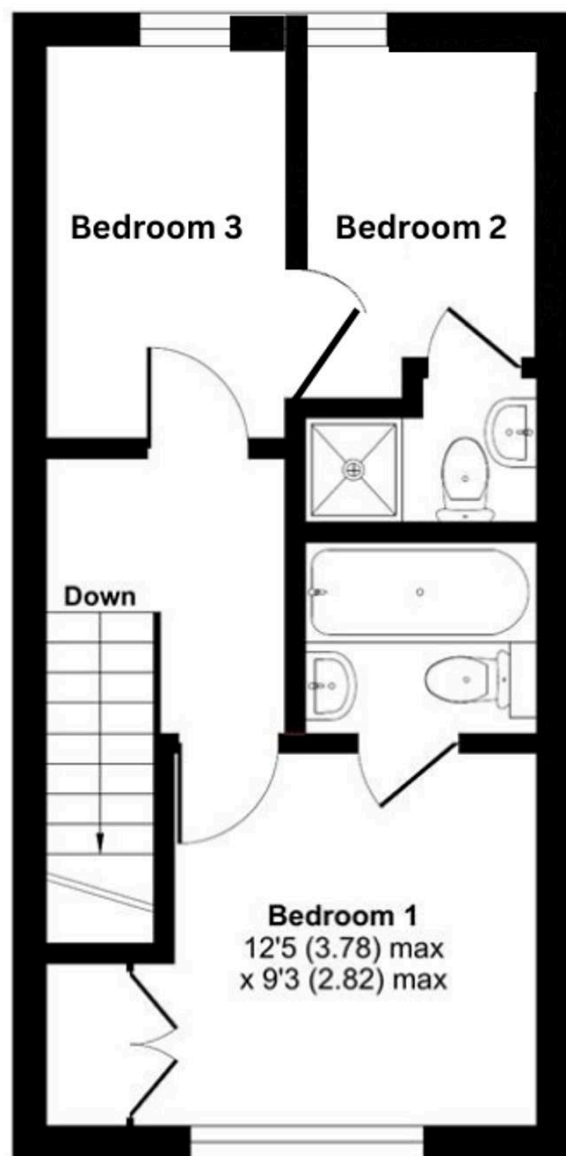
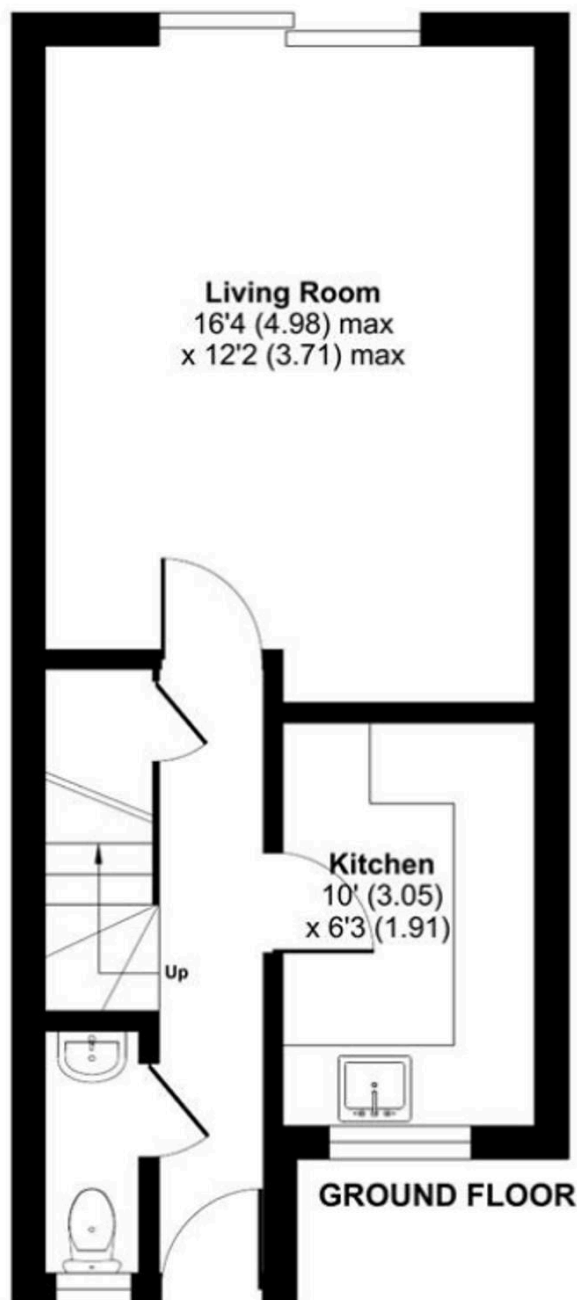




Belfry Square, Beggarwood, Basingstoke, RG22

Approximate Area = 672 sq ft / 62.4 sq m

For identification only - Not to scale



FIRST FLOOR



Floor plan produced in accordance with RICS Property Measurement Standards incorporating International Property Measurement Standards (IPMS2 Residential). © nichecom 2023.
Produced for Property Explorer. REF: 999568