



Goldney Road

London, W9

£2,000 per month
(£461.54 per week)

A bright top floor flat with private balcony with south-facing views.

CHESTERTONS



Goldney Road

London, W9

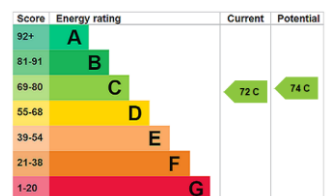
- One Bed
- Private Balcony
- Great Location



Gorgeous one bedroom apartment with private balcony.

You will be located on Goldney Road with excellent transport links, being close to Warwick Avenue Station (Bakerloo Line) and Westbourne Park Station (Hammersmith and City Lines). You will also be close to the canal, Portobello Road and Abbey Road!

Minimum Term: 12 months
Deposit Required: 5 weeks
Local Authority: City of Westminster
Council Tax Band: C
EPC Rating: C
Furnished



Chestertons Little Venice Lettings

26 Clifton Road
Maida Vale
London
W9 1SX
littlevenicelettingsusers@chestertons.co.uk
02072662369
chestertons.co.uk

Additional tenant charges apply (fees apply to non-AST tenancies only)
Tenancy Agreement Fee: £300
References per Tenant/Guarantor: £60
Inventory check (approx. £100 – £250 inc. VAT)
chestertons.co.uk/property-to-rent/applicable-fees

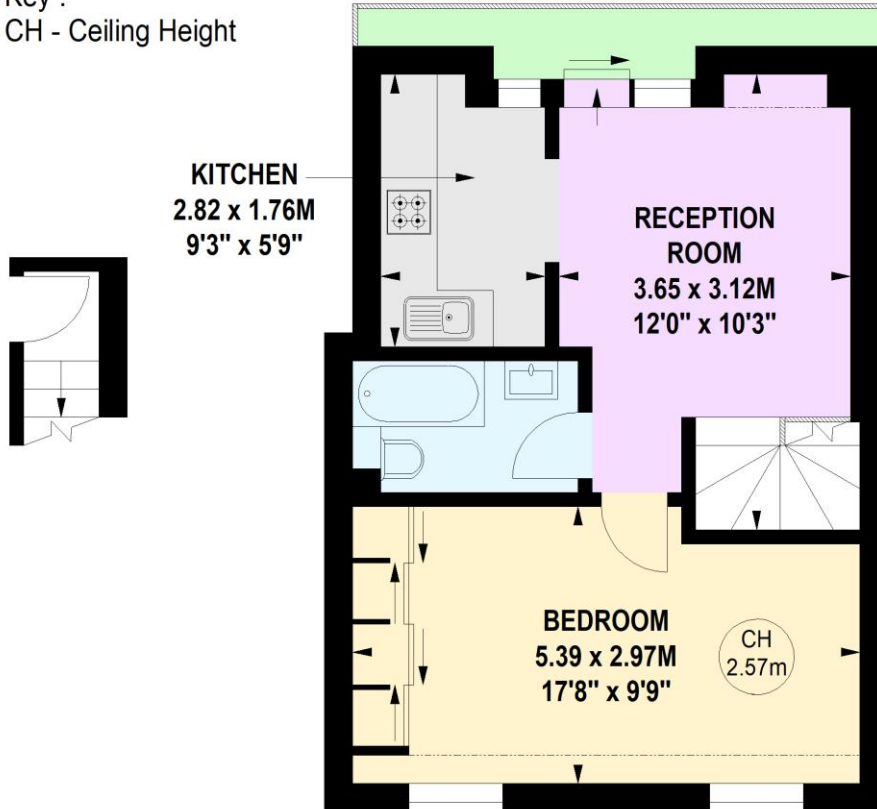
Goldney Road, W9

Approximate gross internal area

39.85 sq m / 429 sq ft



Key :
CH - Ceiling Height



Second Floor
Entrance

Third Floor

Not to scale, for guidance only and must not be relied upon as a statement of fact.
All measurements and areas are approximate only

