



Heather, Plot 212
The Maples,
Inverness, IV2
6HR

Fixed Asking Price
£250,000



The Heather is a luxury, well appointed two bedroom apartment offering a lounge with balcony.

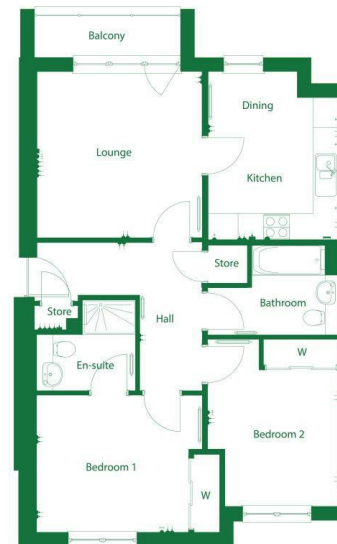
The kitchen/dining room accessed from the lounge features a stylish kitchen designed by Ashley Ann, complete with a range of appliances by Bosch including oven, induction hob, washer dryer, fridge freezer and dishwasher.

Bedroom 1 benefits from an en suite shower room and both bedrooms include fitted wardrobes.

The bathroom, located off the hall, offers fitted vanity units for storage, along with a bath and overhead shower. Two storage cupboards are also located in the hall.

These attractive apartments benefit from communal lift and stair access.

- Third floor apartment with balcony
- High quality kitchen by Ashley Ann with Bosch appliances
- Fitted wardrobes to both bedrooms
- Open plan kitchen/dining room
- Luxury specification throughout
- EPC TBC



Extras: Add text here

Services: Add text here

Council Tax: New Build

Floor Area: 781.00 sq ft

Date of Entry: Add text here

Viewing: Don't delay – get in touch with Tailormade Moves today to arrange a viewing

The Greenhouse Beechwood
Business Park
Inverness
Highland
IV2 3BL

E:
info@tailormademoves.co.uk
T: 01463 233218

