

SHARED OWNERSHIP - Timms Close, Horsham

Shared Ownership £147,500

 2  1  1



50% SHARE AVAILABLE ON SHARED OWNERSHIP SCHEME! A stylish Two Double Bedroom Ground Floor Apartment boasting modern features throughout and One Allocated Parking.

Tenure: Leasehold

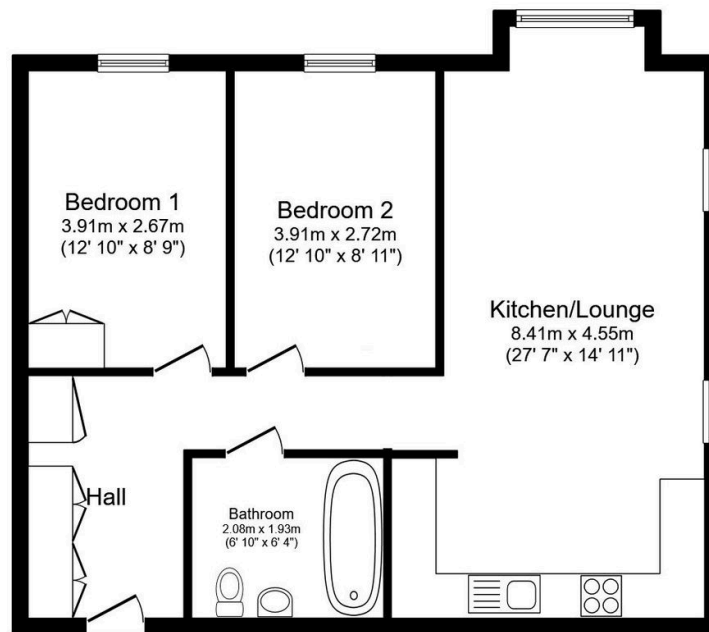
Lease Length: 125 years from and including 1 April 2016

Council Tax Band: C

EPC: Current B - Potential B

Key Features

- Watch Our Video Tour
- Ground Floor Apartment
- Stylish Kitchen
- Built in 2019
- Allocated Parking
- 50% Share Available To Purchase
- Two Double Bedooms
- Open Plan Living
- 0.8 Miles To Horsham Station
- Excellent Storage



Floor Plan

Floor area 68.1 sq.m. (733 sq.ft.)

Total floor area: 68.1 sq.m. (733 sq.ft.)

This floor plan is for illustrative purposes only. It is not drawn to scale. Any measurements, floor areas (including any total floor area), openings and orientations are approximate. No details are guaranteed, they cannot be relied upon for any purpose and do not form any part of any agreement. No liability is taken for any error, omission or misstatement. A party must rely upon its own inspection(s). Powered by www.Propertybox.io