

HUNTERS[®]
HERE TO GET *you* THERE

 3  1  2  G

HERE TO GET *you* THERE

Courtney Crescent, Carshalton, SM5 4NA

Guide Price £375,000



Hunters are pleased to offer this spacious, 3 bedroom semi-detached house situated in Carshalton on the Hill. The property is located just ½ mile from Carshalton Beeches station and also within easy access of sought after schools.

The property is in need of full renovation throughout so is available to **CASH BUYERS ONLY**. Please call to discuss further.

92 High Street, Carshalton, Surrey, SM5 3AE | 020 8669 1231
carshalton@hunters.com | www.hunters.com

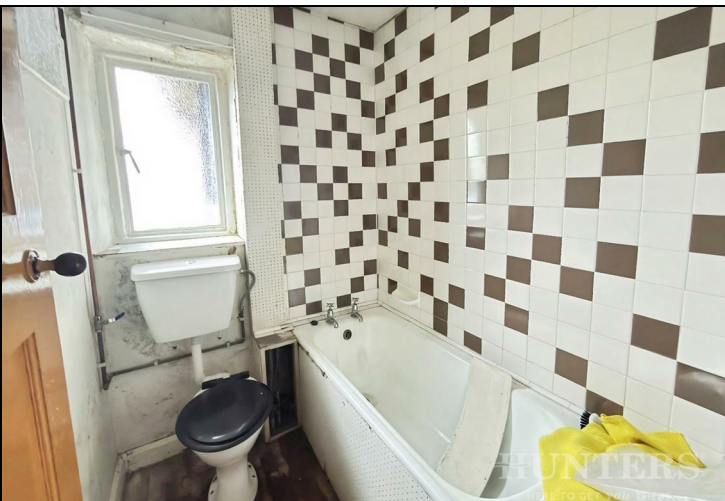


This Hunters business is independently owned and operated by The Tickner Partnership | Trading Address: 92 High Street, Carshalton, Surrey, SM5 3AE. | Partnership England and Wales | VAT No: 383 0806 25 with the written consent of Hunters Franchising Limited.

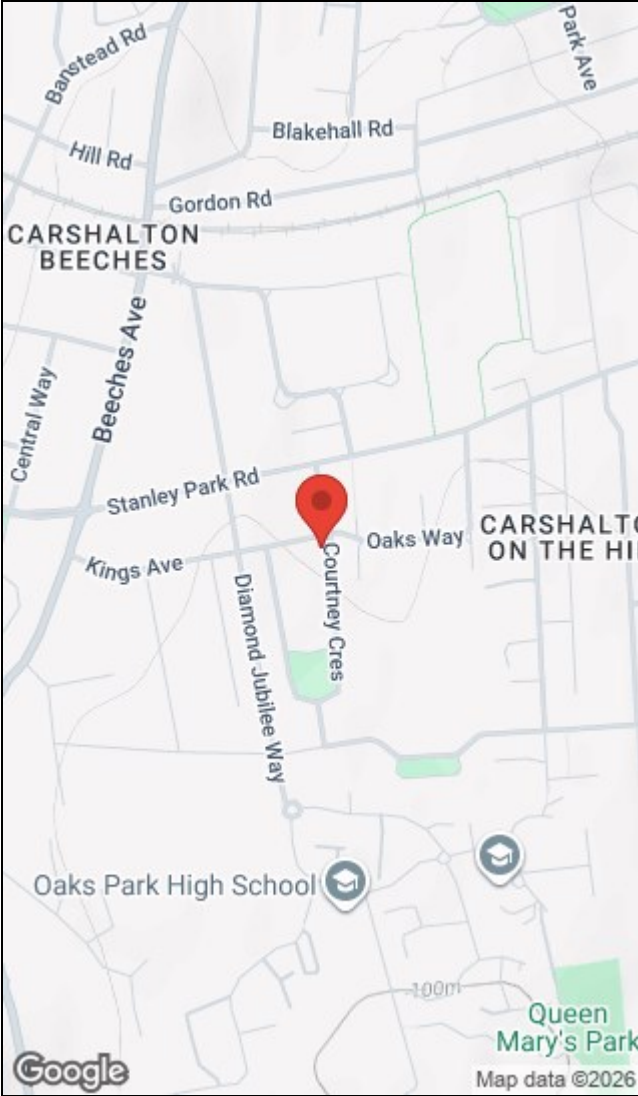
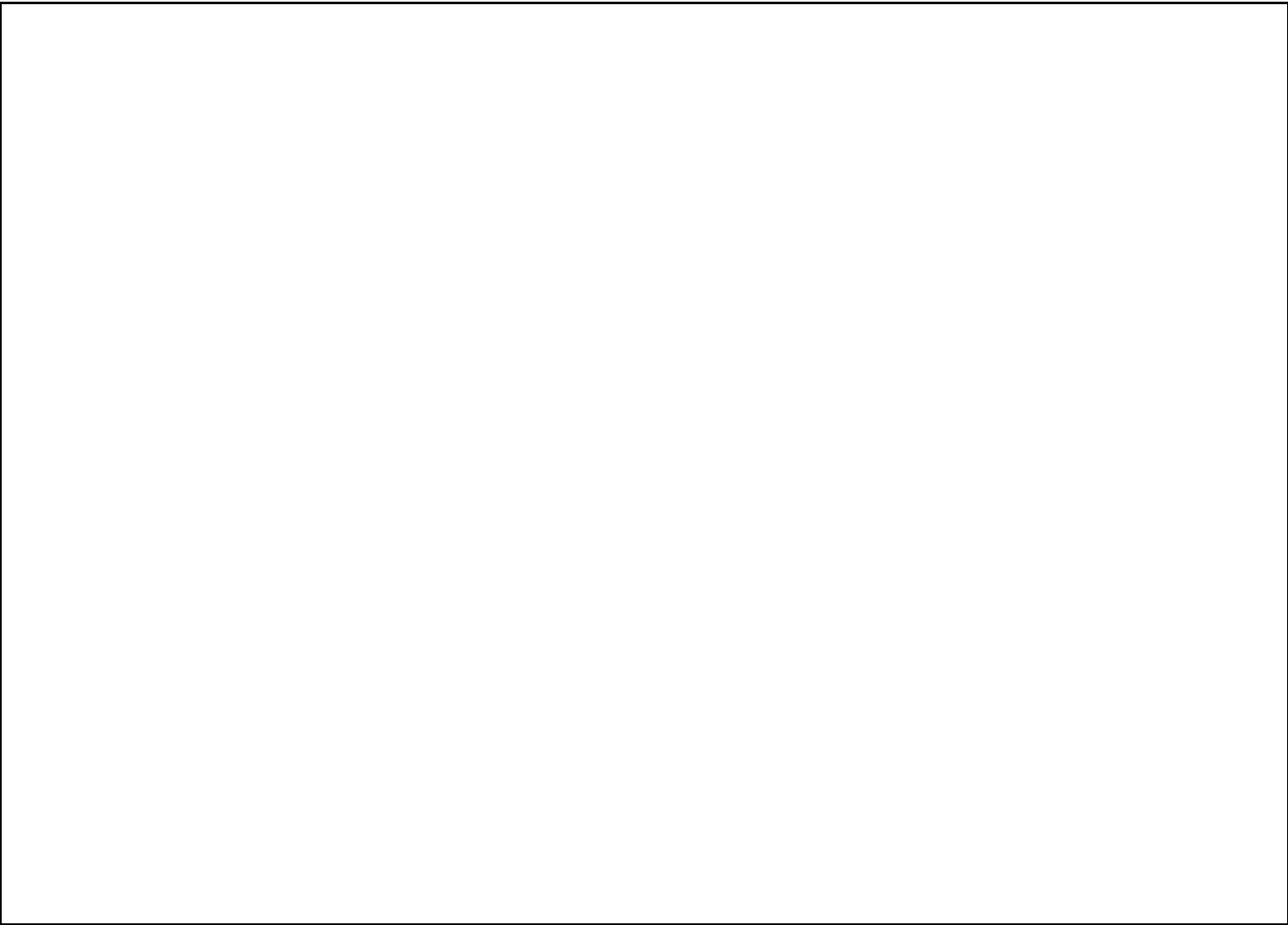


KEY FEATURES

- AVAILABLE FOR CASH BUYERS
 - HUGE POTENTIAL
 - SEMI-DETACHED
- TWO RECEPTION ROOMS
- UPSTAIRS BATHROOM
- POTENTIAL FOR DRIVEWAY
 - NO ONWARD CHAIN
- SOUGHT AFTER LOCATION







Energy Efficiency Rating			Environmental Impact (CO ₂) Rating		
	Current	Potential		Current	Potential
Very energy efficient - lower running costs			Very environmentally friendly - lower CO ₂ emissions		
(92 plus) A			(92 plus) A		
(81-91) B			(81-91) B		
(69-80) C			(69-80) C		
(55-68) D			(55-68) D		
(39-54) E			(39-54) E		
(21-38) F			(21-38) F		
(1-20) G			(1-20) G		
Not energy efficient - higher running costs			Not environmentally friendly - higher CO ₂ emissions		
England & Wales			England & Wales		
EU Directive 2002/91/EC			EU Directive 2002/91/EC		

92 High Street, Carshalton, Surrey, SM5 3AE | 020 8669 1231
carshalton@hunters.com | www.hunters.com



This Hunters business is independently owned and operated by The Tickner Partnership | Trading Address: 92 High Street, Carshalton, Surrey, SM5 3AE. | Partnership England and Wales | VAT No: 383 0806 25 with the written consent of Hunters Franchising Limited.