

Buckingham Gate, London SW1E

Price £1,875 per week - Furnished, Part
Furnished, Unfurnished







Description

A beautifully presented eleventh floor apartment which has been interior designed throughout by TH2 Designs with spectacular north easterly views of London. Accommodation comprises of three double bedrooms, and two bathrooms, Fully fitted kitchen with seating area adjoining a stylishly decorated reception. Fittings throughout include wood floors and marble back drops with floor to ceiling glass windows providing natural light and city views.

Rent is payable on a monthly basis and you may be required to pay more than a month's rent in advance, depending on your circumstances. You will be required to pay a 1 week holding deposit following a successful offer. Utility bills, council tax, telephone line and broadband are not included in the rent. As well as paying the rent, you may also be required to make some additional permitted payments. If your tenancy does not qualify as an AST, additional fees may apply. Please visit jll.co.uk/fees for details of fees which may be payable when renting a property.

Council tax band: H. Rent is payable on a monthly basis, and you may be required to pay more than a month's rent in advance for tenancies with annual rents exceeding £100,000. You will be required to pay a 1 week holding deposit following a successful offer. Tenancies with annual rents up to £50,000 will require a 5 weeks' security deposit, while those exceeding this threshold will require a 6 weeks' deposit. Utility bills, council tax, telephone line and broadband are not included in the rent. As well as paying the rent, you may also be required to make some additional permitted payments. If your tenancy does not qualify as an APT, additional fees may apply. Please visit jll.co.uk/fees for details of fees that may be payable when renting a property. To check broadband and mobile phone coverage please visit Ofcom here ofcom.org.uk/phones-telecoms-and-internet/advice-for-consumers/advice/ofcom-checker

- Master bedroom with en suite shower room
- 2 Further double bedrooms
- 1 Bathroom
- Reception room
- Open plan kitchen
- Eleventh floor
- Lift
- 24 hour concierge
- Furnished
- Approx. 1212 sq ft

Floorplan

1,213 sq ft | 113 sq m

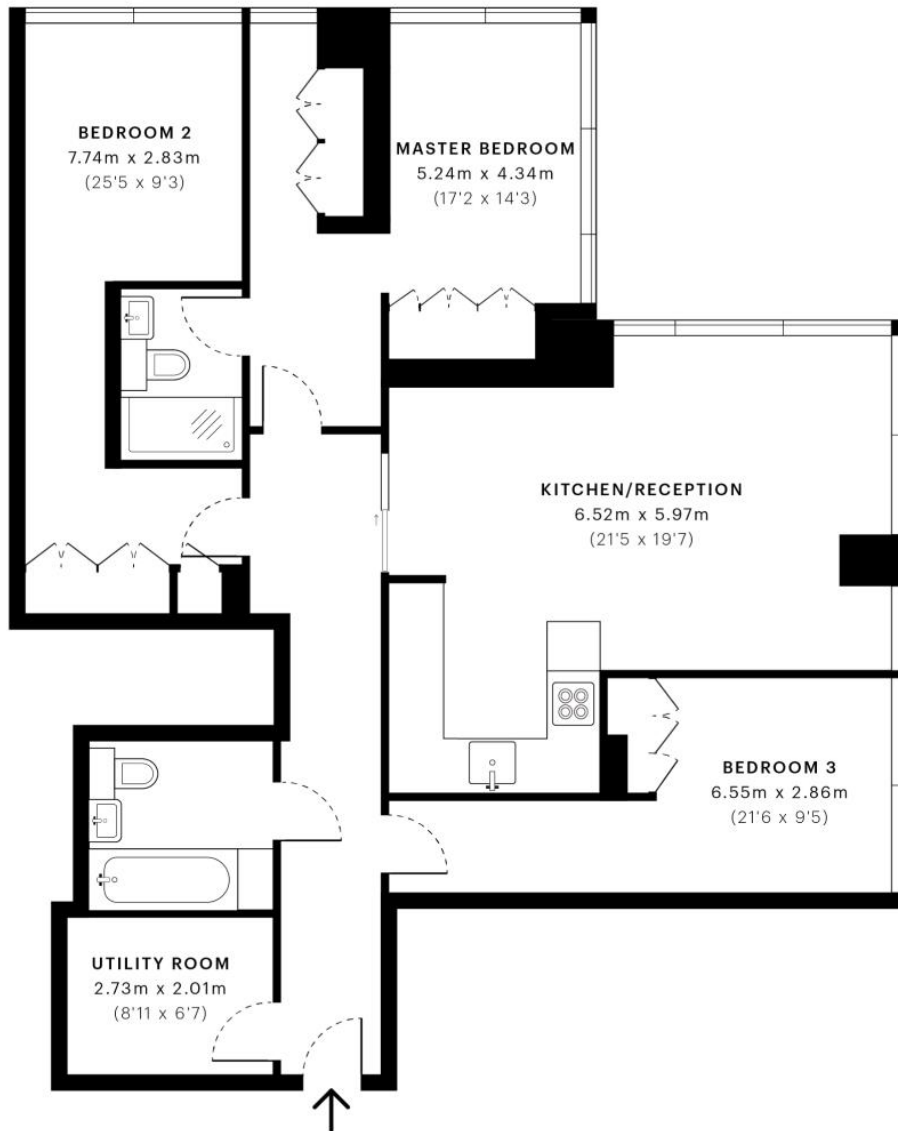


Buckingham Green, SW1E

CAPTURE DATE
10/07/2019

LASER SCAN POINTS
43,022,529

GROSS INTERNAL AREA
112.7 Sqm / 1212.7 Sqft



— Eleventh Floor

Chelsea & Knightsbridge
2 Cale Street,
London SW3 3QU
+4420 7306 1600
lettingsknightsbridge@jll.com

Urban living, your way.

jll.co.uk/residential

© 2019 Jones Lang LaSalle IP, Inc. All rights reserved. All information contained herein is from sources deemed reliable; however, no representation or warranty is made to the accuracy thereof.

