

FLETCHERS

ESTATE AGENTS



Melina Road, W12

£350,000

A well presented, spacious double bedroom converted flat within an attractive Victorian building on a quite tree lined street in the heart of Shepherds Bush. Situated on the raised ground floor and arranged laterally, the property comprises of a generously sized double bedroom with built-in storage. To the front of the property there is a large living room with built in storage, high ceilings and a lovely bay window allowing for plenty of natural light. A separate kitchen with fitted appliances and a bathroom suite also sit on this floor.

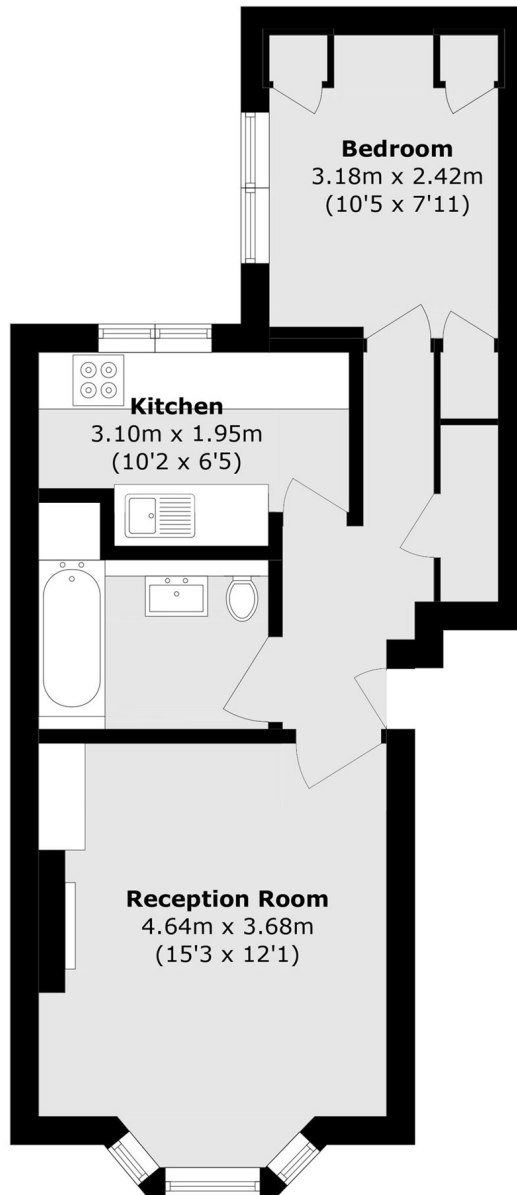
This brilliant property offers fantastic value for money in a prime central location and is offered to the market with a share of freehold and no onward chain.

Melina Road is positioned well for the green space of Ravenscourt Park. It is located near to Askew Road, where there is an array of local shops, bars and restaurants. The award-winning Ginger Pig butchers, The Eagle with its excellent pub gardens, the October 26 Bakery and Burnt are local favourites. The Westfield shopping centre is a short bus ride away. Ravenscourt Park (District line) and Goldhawk Road (Hammersmith & City line & Circle line) as well as Shepherds Bush (Central line) are all nearby, offering excellent connections into town.

- Large One Bedroom Flat • Share of Freehold • High Ceilings • Separate Kitchen • No Onward Chain • Quiet Residential Street •

FLETCHERS

ESTATE AGENTS



Total area (approx.): 42.0 sq. m (452.0 sq. ft)

Fletchers Brook Green Sales
144 Shepherds Bush Road, Hammersmith, London, W6 7PB
020 7603 1415
brookgreensales@fletcherestates.com

Energy Rating: E. We aim to make our particulars both accurate and reliable. However they are not guaranteed; nor do they form part of an offer or contract. If you require clarification on any points then please contact us, especially if you're traveling some distance to view. Please note that appliances and heating systems have not been tested and therefore no warranties can be given as to their good working order.