

12 Stewart Court

Epping

A wonderful one bedroom retirement apartment in the pretty spot of Stewart Court, Epping. Just a short walk to the local shops, and with all the community buzz of Epping close by, this is a great place to call home.

Council Tax band: D

Tenure: Leasehold

- Retirement living
- Parking
- Shower room
- Walking distance to Epping station and high street
- Communal garden
- Communal reception, laundry and guest suite



Hallway

Lounge / Dining Room

16' 8" x 10' 0" (5.09m x 3.04m)

Kitchen

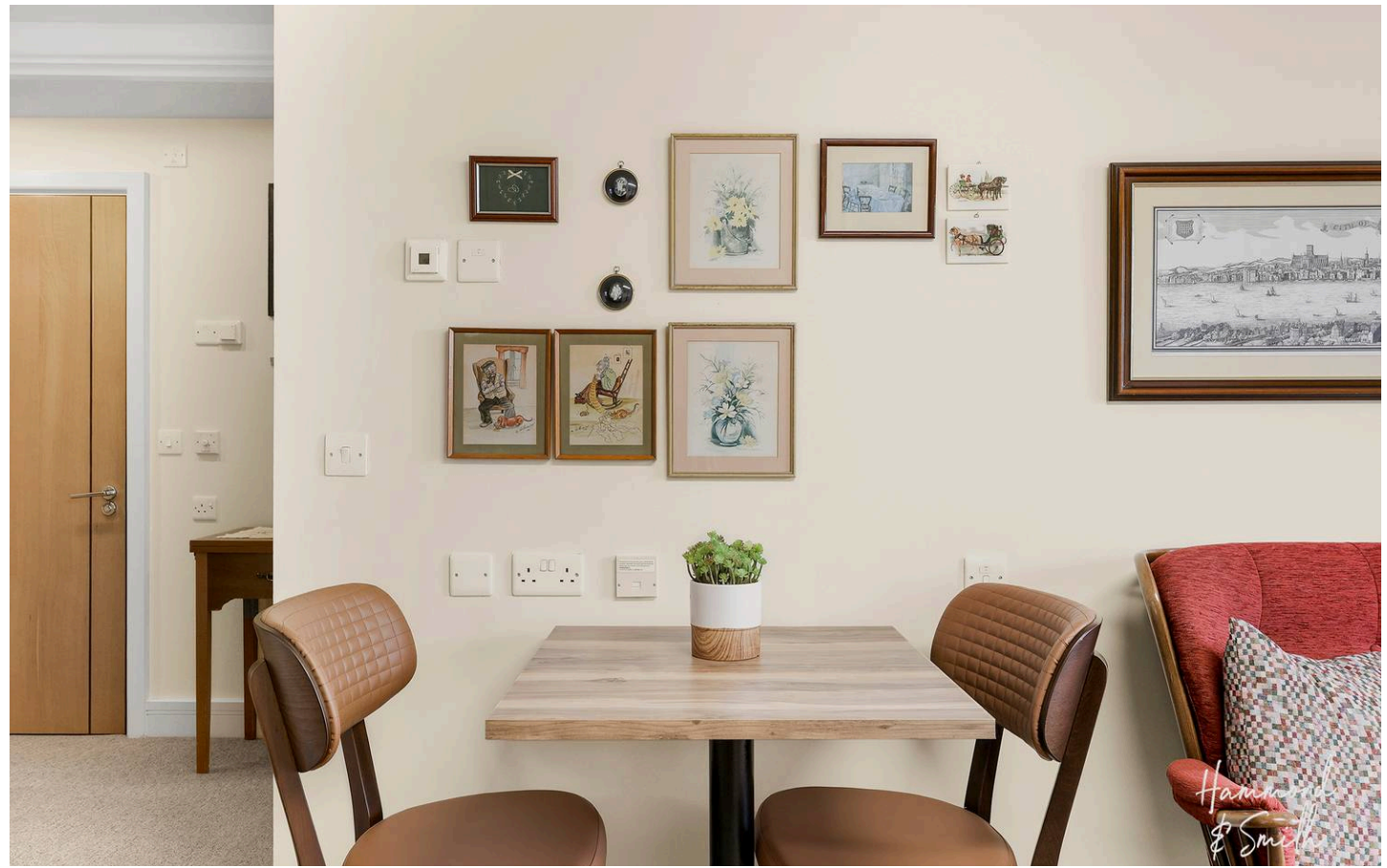
7' 2" x 6' 1" (2.19m x 1.85m)

Bedroom

15' 6" x 9' 10" (4.73m x 3.00m)

Shower Room

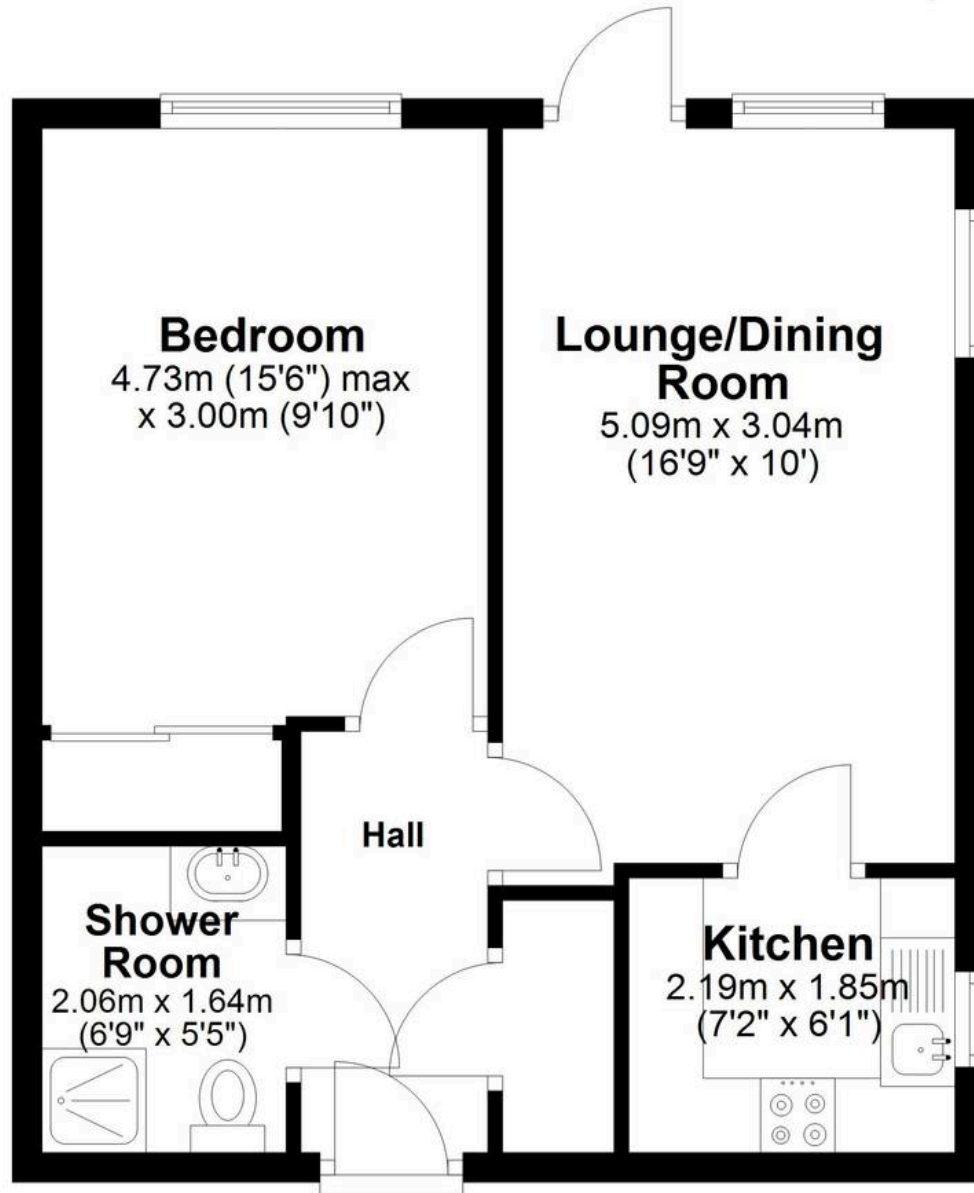
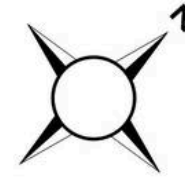
6' 9" x 5' 5" (2.06m x 1.64m)





Ground Floor

Approx. 42.4 sq. metres (456.0 sq. feet)



Bedroom
4.73m (15'6") max
x 3.00m (9'10")

**Lounge/Dining
Room**
5.09m x 3.04m
(16'9" x 10')

**Shower
Room**
2.06m x 1.64m
(6'9" x 5'5")

Hall

Kitchen
2.19m x 1.85m
(7'2" x 6'1")

Total area: approx. 42.4 sq. metres (456.0 sq. feet)