

An aerial photograph of a coastal city at sunset. The sky is a mix of blue and orange, with wispy clouds. In the background, there are mountains and a large body of water. The city below is densely packed with buildings and greenery. The text "18 INDIVIDUALLY DESIGNED SUSTAINABLE VILLAS" is overlaid in white, bold, sans-serif font in the center of the image.

# 18 INDIVIDUALLY DESIGNED SUSTAINABLE VILLAS

VILLA  
N°16

## VILLA N°16

**Villa N°16 sits on a west facing plot and enjoys magnificent views straight across the Mediterranean and complete privacy.** The villa has plenty of terrace space which makes the most of the year-round warm weather in Marbella. The landscaped garden can easily accommodate an organic vegetable garden, if so desired. In key parts of the villa the windows disappear into the walls, framing the undisturbed, panoramic views of the idyllic natural surroundings. There are three spacious ensuite bedrooms, all of which have their own terraces. The Master Bedroom Suite is designed along the lines of a 5-star hotel suite with it's own lounge area, fireplace and spacious wardrobe. Built over three floors with a large basement that can be customised to requirements, this is an exceptional home.





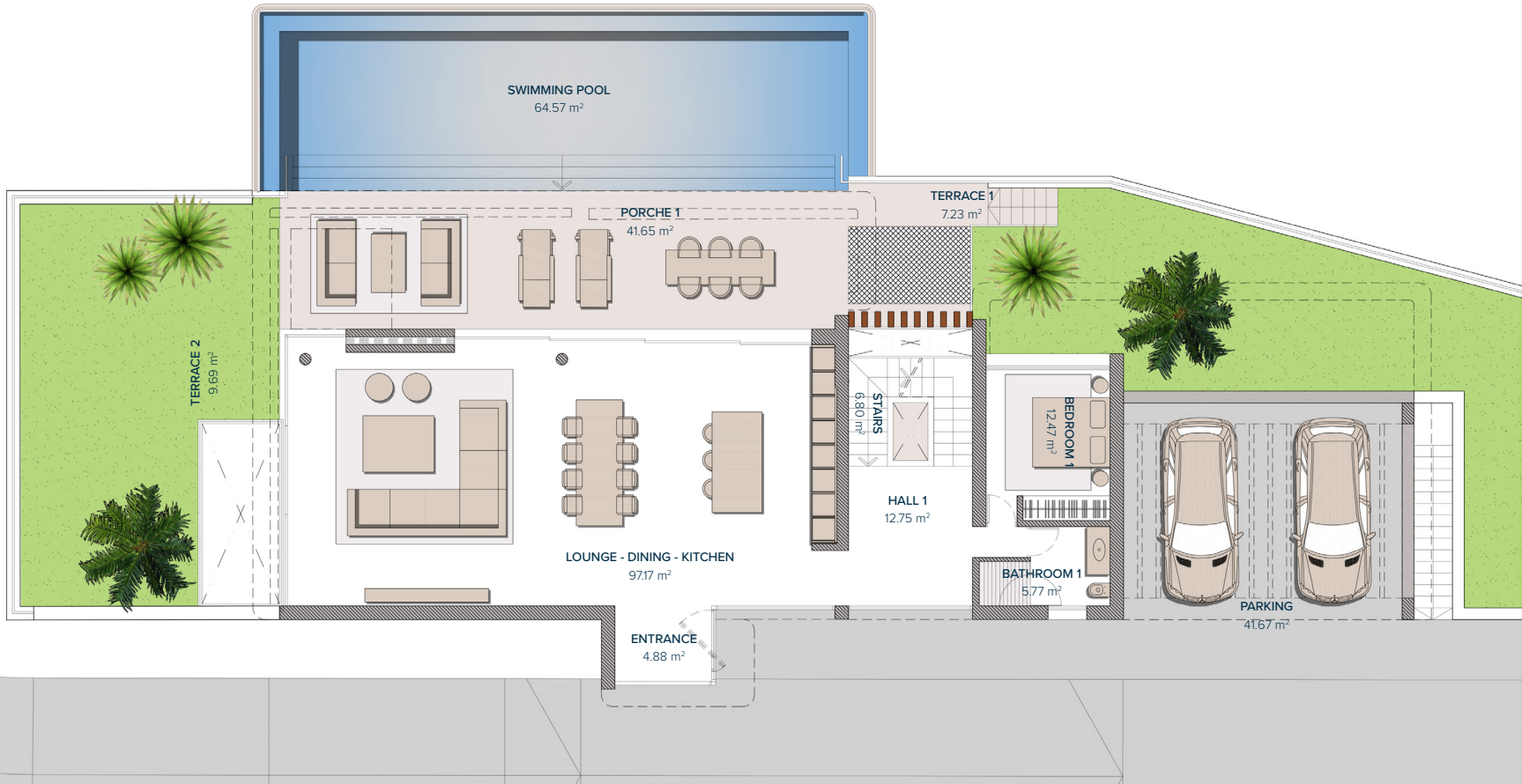
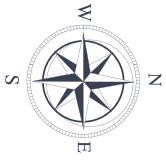
## VILLA Nº16

FIRST FLOOR	165,36 m <sup>2</sup>
GROUND FLOOR	112,70 m <sup>2</sup>
BASEMENT	297,39 m <sup>2</sup>
<b>TOTAL</b>	<b>575,45 m<sup>2</sup></b>

PORCHES	55,22 m <sup>2</sup>
TERRACES	66,01 m <sup>2</sup>
PERGOLAS	24,16 m <sup>2</sup>
CARPORT	42,00 m <sup>2</sup>
COMUN AREAS	8,70 m <sup>2</sup>
<b>TOTAL</b>	<b>771,54 m<sup>2</sup></b>

<b>PLOT</b>	<b>9.644,00 m<sup>2</sup></b>
GARDEN	157,59 m <sup>2</sup>
SWIMMING POOL	64,57 m <sup>2</sup>
<b>TOTAL USEFUL AREA</b>	<b>492,67 m<sup>2</sup></b>
DECREE 218/2005	

These images are not contractual but only for illustrative purposes. The images are subject to technical, legal or commercial modifications approved by the project management or the competent authority. The 3D images corresponding to the facades, common elements, and the rest of the spaces are merely indicative and will be subject to verification or Modification in the technical projects. The furniture of the 3D images is not included and the equipment of the villas will be indicated in the corresponding building and quality specifications. The energy certification corresponds with the one established in the project in process. All the information and documentation will be provided according to the terms established in the Royal Decree 515/1989 and in the rest of the autonomous or state regulations currently in force that could complement the Mentioned Decree.



## VILLA Nº16

### GROUND FLOOR

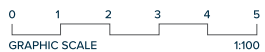
#### ENTRANCE & LIVING AREA

ENTRANCE	4,88 m <sup>2</sup>
HALL 1	12,75 m <sup>2</sup>
STAIRS	6,80 m <sup>2</sup>
LOUNGE-DINING - KITCHEN	97,17 m <sup>2</sup>
BATHROOM 1	5,77 m <sup>2</sup>
BEDROOM 1	12,47 m <sup>2</sup>
<b>TOTAL</b>	<b>139,84 m<sup>2</sup></b>

PARKING (PERGOLA)	41,67 m <sup>2</sup>
<b>TOTAL</b>	<b>41,67 m<sup>2</sup></b>

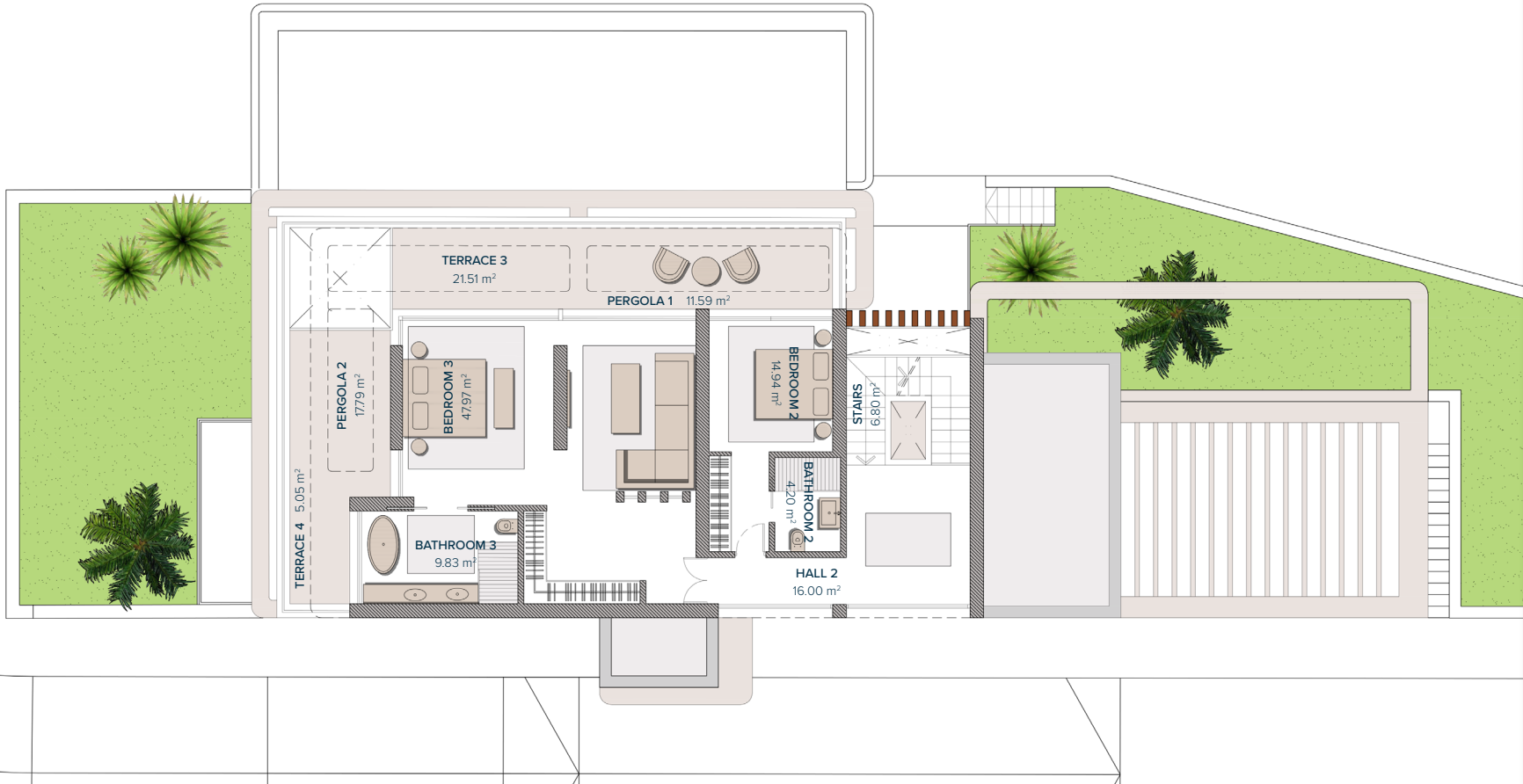
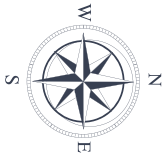
#### PERGOLAS & TERRACES

TERRACE 1	7,23 m <sup>2</sup>
PORCHE 1	41,65 m <sup>2</sup>
TERRACE 2	9,69 m <sup>2</sup>
<b>TOTAL</b>	<b>58,57 m<sup>2</sup></b>



Entrance	1
	0
	-1

These images are not contractual but only for illustrative purposes. The images are subject to technical, legal or commercial modifications approved by the project management or the competent authority. The 3D images corresponding to the facades, common elements, and the rest of the spaces are merely indicative and will be subject to verification or Modification in the technical projects. The furniture of the 3D images is not included and the equipment of the villas will be indicated in the corresponding building and quality specifications. The energy certification corresponds with the one established in the project in process. All the information and documentation will be provided according to the terms established in the Royal Decree 515/1989 and in the rest of the autonomous or state regulations currently in force that could complement the Mentioned Decree.



## VILLA Nº16

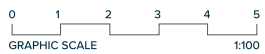
### FIRST FLOOR

#### BEDROOMS

HALL 2	16,00 m <sup>2</sup>
STAIRS	6,80 m <sup>2</sup>
BATHROOM 2	4,20 m <sup>2</sup>
BEDROOM 2	14,94 m <sup>2</sup>
BATHROOM 3	9,83 m <sup>2</sup>
BEDROOM 3	47,97 m <sup>2</sup>
<b>TOTAL</b>	<b>99,74 m<sup>2</sup></b>

#### PERGOLAS & TERRACES

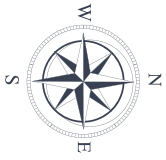
TERRACE 3	21,51 m <sup>2</sup>
PERGOLA 1	11,59 m <sup>2</sup>
PERGOLA 2	17,79 m <sup>2</sup>
TERRACE 4	5,05 m <sup>2</sup>
<b>TOTAL</b>	<b>55,94 m<sup>2</sup></b>



Entrance

1
0
-1

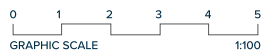
These images are not contractual but only for illustrative purposes. The images are subject to technical, legal or commercial modifications approved by the project management or the competent authority. The 3D images corresponding to the facades, common elements, and the rest of the spaces are merely indicative and will be subject to verification or Modification in the technical projects. The furniture of the 3D images is not included and the equipment of the villas will be indicated in the corresponding building and quality specifications. The energy certification corresponds with the one established in the project in process. All the information and documentation will be provided according to the terms established in the Royal Decree 515/1989 and in the rest of the autonomous or state regulations currently in force that could complement the Mentioned Decree.



## VILLA Nº16

### BASEMENT

HALL 3	35,26 m <sup>2</sup>
STAIRS	7,71 m <sup>2</sup>
AREA 1	21,07 m <sup>2</sup>
AREA 2	4,26 m <sup>2</sup>
AREA 3	22,15 m <sup>2</sup>
AREA 4	4,25 m <sup>2</sup>
AREA 5	56,59 m <sup>2</sup>
LAUNDRY ROOM	18,20 m <sup>2</sup>
POOL MACHINE ROOM	18,24 m <sup>2</sup>
MACHINERY ROOM	18,27 m <sup>2</sup>
PATIO	1,80 m <sup>2</sup>
<b>TOTAL</b>	<b>207,80 m<sup>2</sup></b>



Entrance

1
0
-1

These images are not contractual but only for illustrative purposes. The images are subject to technical, legal or commercial modifications approved by the project management or the competent authority. The 3D images corresponding to the facades, common elements, and the rest of the spaces are merely indicative and will be subject to verification or Modification in the technical projects. The furniture of the 3D images is not included and the equipment of the villas will be indicated in the corresponding building and quality specifications. The energy certification corresponds with the one established in the project in process. All the information and documentation will be provided according to the terms established in the Royal Decree 515/1989 and in the rest of the autonomous or state regulations currently in force that could complement the Mentioned Decree.

VILLA Nº16

