



Clarewood Walk, SW9

£350,000

A split level apartment presented in excellent condition throughout, extending to an impressive 967 sq.ft. The property comprises a spacious open plan reception room with a modern kitchen and a balcony, four bedrooms, a bathroom, a further cloakroom and a storage area. Service charge includes hot water and heating.

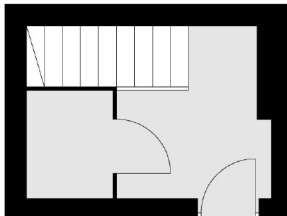
Southwyck House is situated on the doorstep of central Brixton, providing excellent access to the area's many shops, bars and restaurants. Brixton Underground station (Victoria Line) and Brockwell Park are just around the corner.

Features

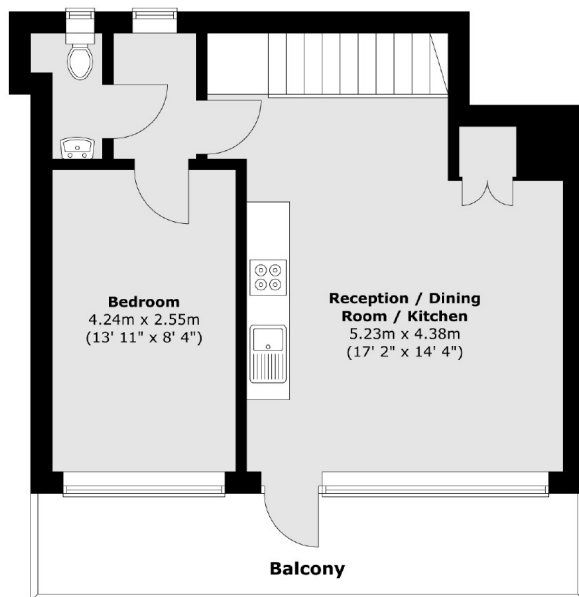
- Split Level Apartment
- Open Plan Reception Room
- Modern Kitchen
- Four Bedrooms
- Balcony
- Chain Free

Clarewood Walk, London, SW9

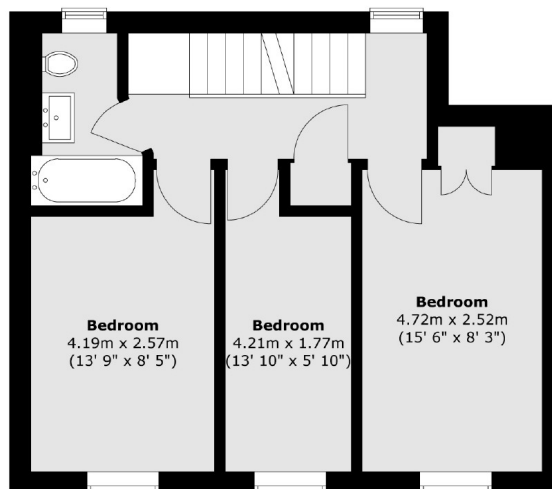
Seventh Floor



Fifth Floor



Sixth Floor



Total area (approx.) : 89.8 sq. m (967 sq. ft)
Total balcony area (approx.) : 10.1 sq. m (109 sq. ft)