

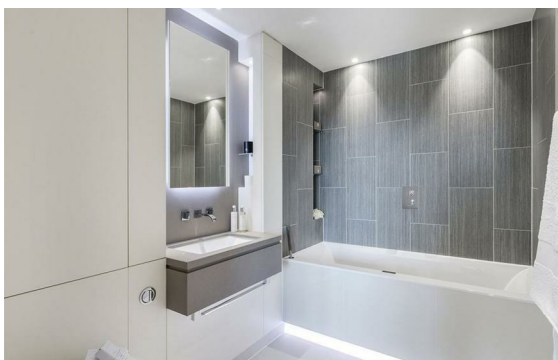
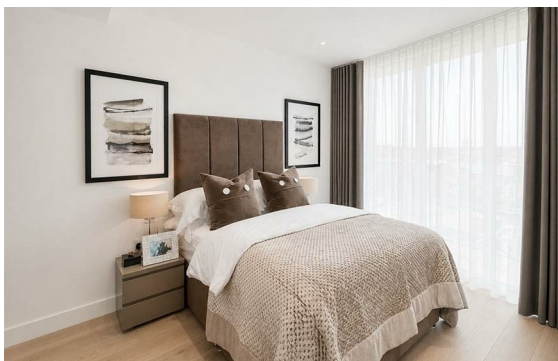


Great Portland Street, Fitzrovia, London, W1W

Rent £1,250 PCM

2 Bed | 2 Bath | 1 Reception

Please call us on 020 7724 2233 or email us info@newingtonstates.com to book a viewing.



A beautifully presented two-bedroom apartment offering modern interior and a practical layout in a sought-after location close to Regent's Park. The property features a bright reception room, a modern fitted kitchen, and two well-proportioned double bedrooms. Two bathrooms, including an en-suite to the principal bedroom, provide added convenience, while large windows create a bright and airy feel throughout.

Residents benefit from lift access, porter service, and access to a communal garden. Ideally located close to Great Portland Street Station and within easy reach of Regent's Park, local universities, cafés, restaurants, and shops.

EPC Rating: B

Energy Efficiency Rating: B

Agents Note: Whilst every care has been taken to prepare these particulars, they are for guidance purposes only. All measurements are approximate and are for general guidance purposes only and whilst every care has been taken to ensure their accuracy, they should not be relied upon and potential buyers/tenants are advised to recheck the measurements.

NEWINGTON
— ESTATES —

60 Upper Montagu Street

London

W1H 1SN

020 7724 2233

info@newingtonstates.com

<http://www.newingtonstates.com>