



Keswick Road

London, SW15

Guide Price £600,000

Chain free two-bedroom, two-bathroom apartment, offering spacious living just steps from East Putney tube station.

CHESTERTONS



Keswick Road

London, SW15

- Two Double Bedrooms
- Two Bathrooms
- Chain free
- Underground parking space
- 0.1 mile to East Putney Tube Station



Chain free two-bedroom, two-bathroom apartment, offering spacious living just steps from East Putney tube station.

The apartment is situated on the third floor, offering 848 square feet of accommodation, comprising a large principle bedroom with built in storage and en-suite bathroom. The second double bedroom has further built in storage. There is an additional bathroom off the sizeable entrance hallway.

The property offers a large open plan kitchen / living room, featuring island / breakfast bar with plenty of preparation and storage space. The living room is a fantastic size and offers great space for a large sofa and more than enough space for a dining room table.

The flat further benefits from private underground parking and is being sold chain free.

Keswick Road is excellently located within easy reach of East Putney Underground station (0.1 miles), Putney rail station (0.4 miles) and the wealth of amenities of Putney High Street, as well as popular local schools. Large green open spaces are also nearby with Wandsworth Common, Putney Heath, Wimbledon Common and Richmond Park all being in close proximity.

Tenure: Leasehold (expires 01/06/3005)

Service Charge: £5833.4

Local Authority: London Borough of Wandsworth

Council Tax Band: F

Score	Energy rating	Current	Potential
92+	A		
81-91	B		
69-80	C	80 °C	80 °C
55-68	D		
39-54	E		
21-38	F		
1-20	G		

Chestertons Putney Sales

153 Upper Richmond Road
 London
 SW15 2TX
 putney@chestertons.co.uk
 020 8246 5959
 chestertons.co.uk

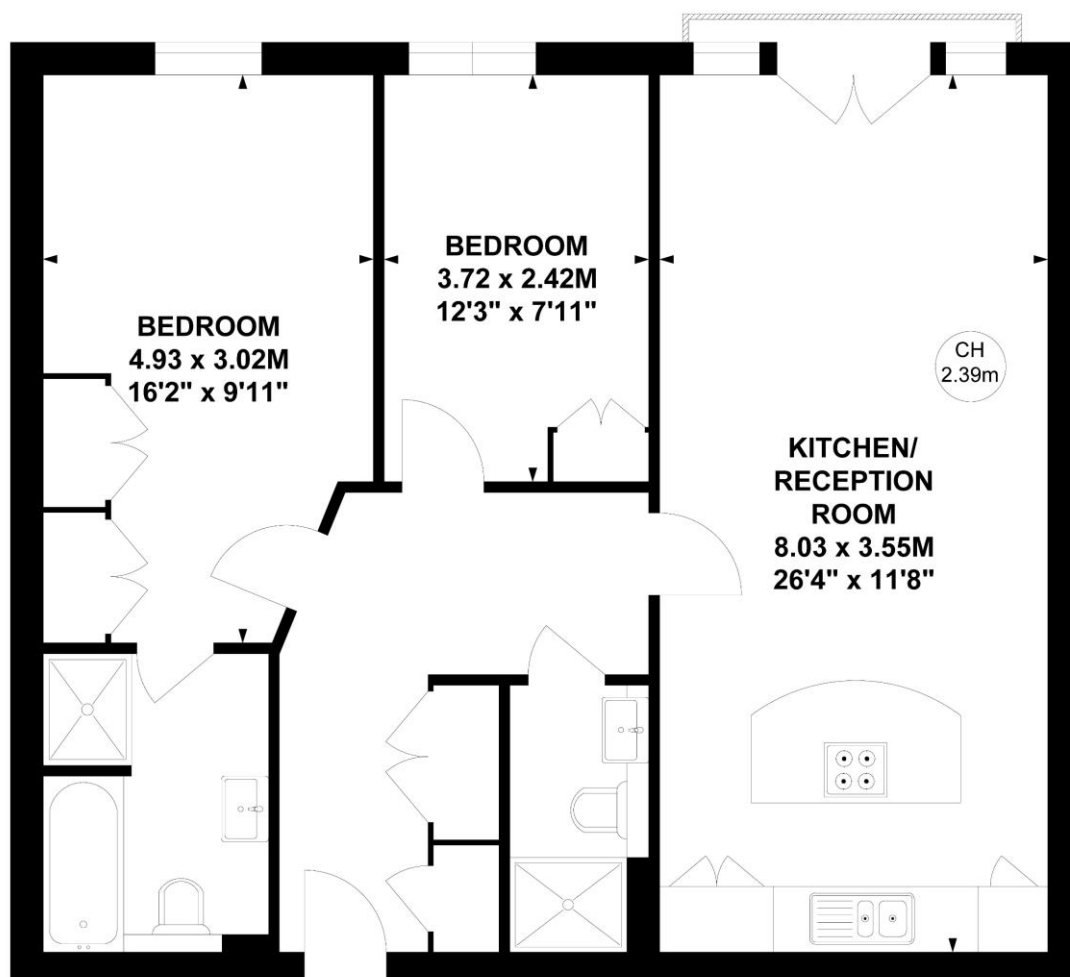
Espirit House, SW15

Approximate gross internal area

73.79 sq m / 794 sq ft

Key :

CH - Ceiling Height



Third Floor

Not to scale, for guidance only and must not be relied upon as a statement of fact.

All measurements and areas are approximate only

