



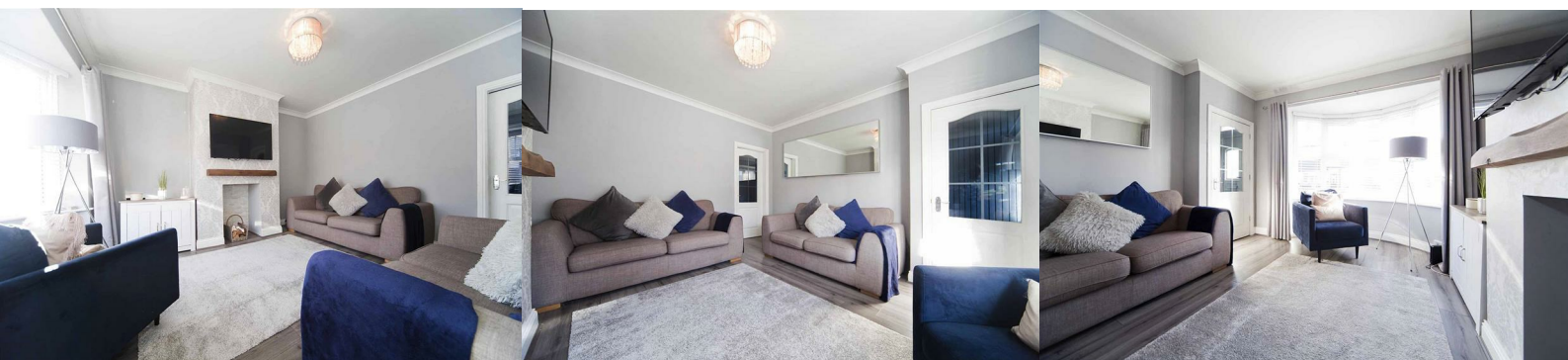
## 26 Oban Avenue

, Hartlepool, TS25 5LN

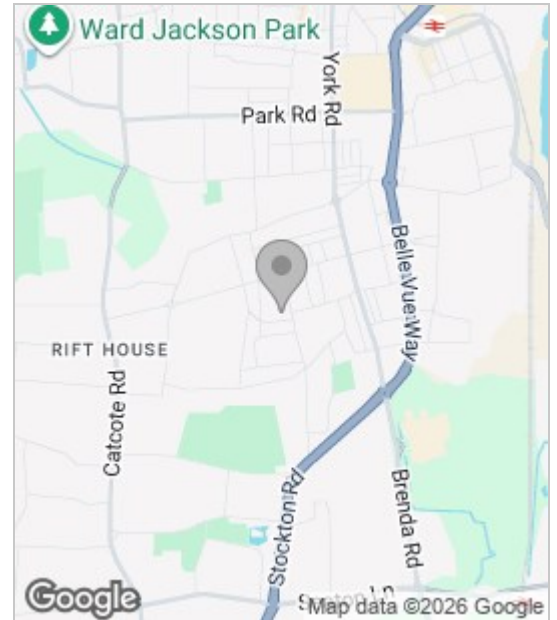
**£110,000**



Igomove are pleased to present to the market this extended three bedroom semi detached house located in a popular residential area close to amenities including; shops, schools and bus services, it also provides several desired features which include; three well proportioned bedrooms, modern family bathroom, good size lounge, excellent dining room, well equipped kitchen, rear courtyard garden, UPVC double glazing, gas central heating, excellent decor, fitted blinds, on street parking, freehold.



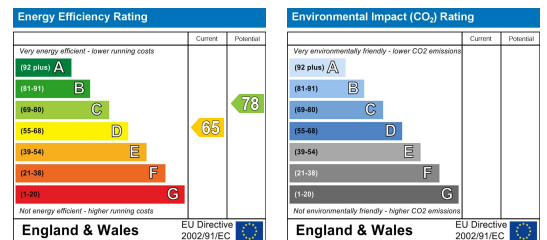
## Area Map



## Floor Plan



## Energy Efficiency Graph



These particulars, whilst believed to be accurate are set out as a general outline only for guidance and do not constitute any part of an offer or contract. Intending purchasers should not rely on them as statements of representation of fact, but must satisfy themselves by inspection or otherwise as to their accuracy. No person in this firm's employment has the authority to make or give any representation or warranty in respect of the property.