



WETHERELL

MAYFAIR'S FINEST PROPERTIES



Mount Street, W1K

£3,800,000

A four-bedroom apartment on iconic Mount Street with high ceilings, two balconies and live in caretaker

Measuring 1,736 sq. Ft, with 3.17m ceiling heights, this elegant apartment is situated in the heart of Mayfair village with south facing views of Mount Street. The large double reception room has a balcony, feature fireplace and ornate corncing. There is a separate kitchen at the rear of the property with integrated appliances.

The principal bedroom suite has built in wardrobes and south facing balcony. There are two further double bedrooms and a single bedroom/study. Additionally there are two guest bathrooms and a separate WC.

Tenure - Leasehold, approximately 121 years remaining

Service Charge - Approximately £10,000 per annum (Inclusive of insurance)

Ground Rent - TBC

Audley Mansions is a fine example of classical Mayfair architecture. This purpose-built block has a live in caretaker and a lift and is not only positioned at the best end of Mount Street, but as a South facing building



FEATURES

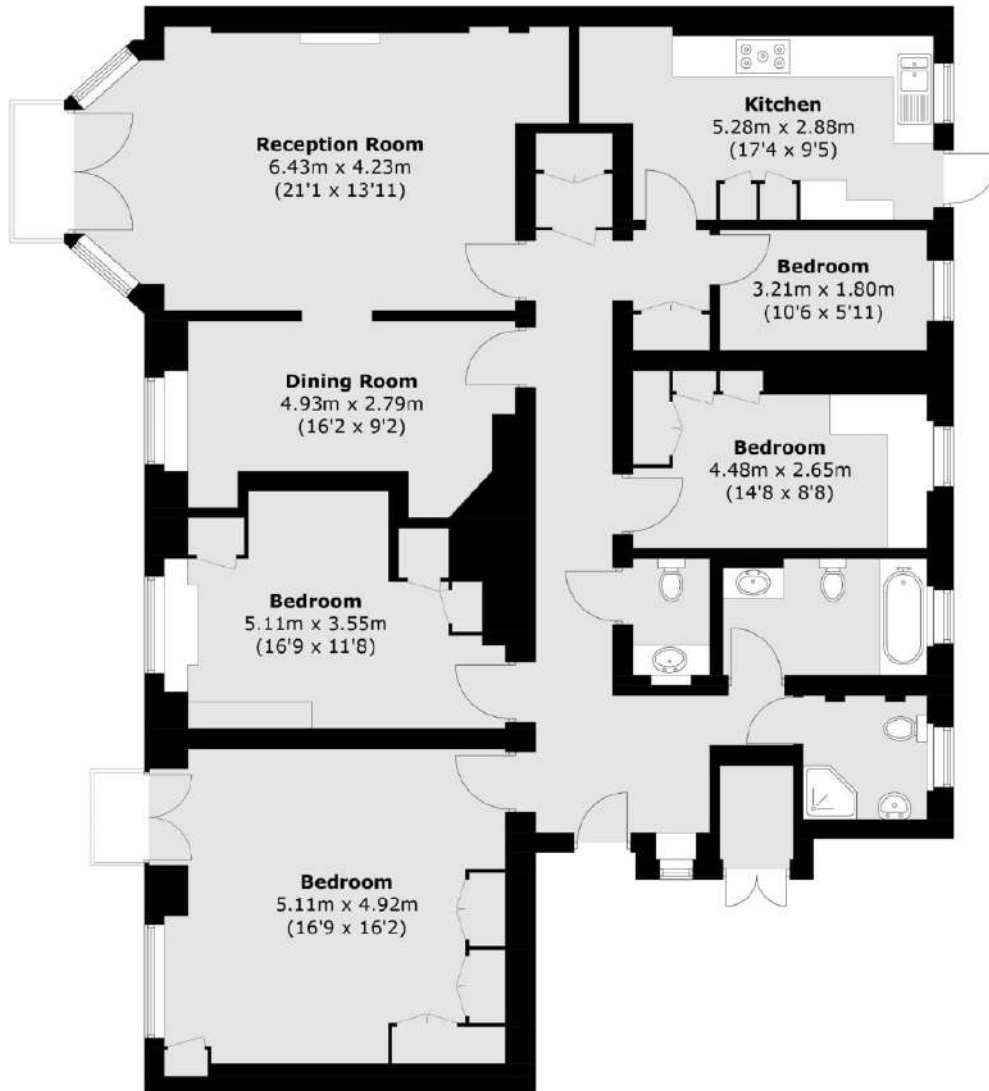
- Mount Street • Two balconies • South Facing • Four Bedrooms • Lift • Live In Caretaker •



Mount Street, London, W1K

9/5/22, 4:23 PM

Final_895117_Flat-F-44-Mount_050922111027942.jpg



Third Floor

Total area (approx.): 161.3 sq. m (1,736.2 sq. ft)

<https://drive.google.com/drive/folders/1U2ct4zZV4PO93GeaeHX8z524jkCzOH22>

1/1



WETHERELL
MAYFAIR'S FINEST PROPERTIES

102 Mount Street,
London, W1K 2TH
T: 020 7529 5566
E: sales@wetherell.co.uk

We aim to make our particulars both accurate and reliable. However they are not guaranteed; nor do they form part of an offer or contract. If you require clarification on any points then please contact us, especially if you're traveling some distance to view. Please note that appliances and heating systems have not been tested and therefore no warranties can be given as to their working order.

wetherell.co.uk