



Chelmer Way, Eccles

Manchester



In Excess of £290,000

Chelmer Way

Eccles, Manchester

*****BEAUTIFUL THREE BEDROOM SEMI DETACHED PROPERTY!***** Located on the highly regarded 'Bridgewater Village' and featuring a three piece family bathroom, en-suite to the master and downstairs W.C.!

Council Tax band: C

Tenure: Leasehold

- FANTASTIC THREE BEDROOM SEMI-DETACHED PROPERTY LOCATED ON THE DESIRABLE BRIDGEWATER DEVELOPMENT
- MODERN FAMILY BATHROOM SUITE, DOWNSTAIRS W.C. AND EN-SUITE TO THE MASTER
- BAY FRONTED LOUNGE
- OPEN PLAN FITTED KITCHEN AND DINING SPACE
- THREE GENEROUS BEDROOMS
- OFF ROAD PARKING FOR MULTIPLE CARS
- PERFECT FIRST BUY OR FAMILY HOME
- PRIVATE SUN DRENCHED REAR GARDEN
- WALKING DISTANCE TO BUS, TRAIN & TRAM STATIONS & BRILLIANT MOTORWAY LINKS (M60 & M62)
- CLOSE TO MANY LOCAL AMENITIES INCLUDING SHOPS, PARKS & GOOD LOCAL SCHOOLS



Hallway

7' 1" x 3' 6" (2.15m x 1.07m)

Lounge

16' 4" x 12' 10" (4.97m x 3.90m)

Kitchen/Diner

16' 4" x 12' 10" (4.97m x 3.90m)

Downstairs WC

5' 9" x 2' 1" (1.76m x 0.64m)

Landing

Bedroom One

12' 4" x 9' 5" (3.77m x 2.86m)

En-suite

5' 2" x 5' 9" (1.58m x 1.75m)

Bedroom Two

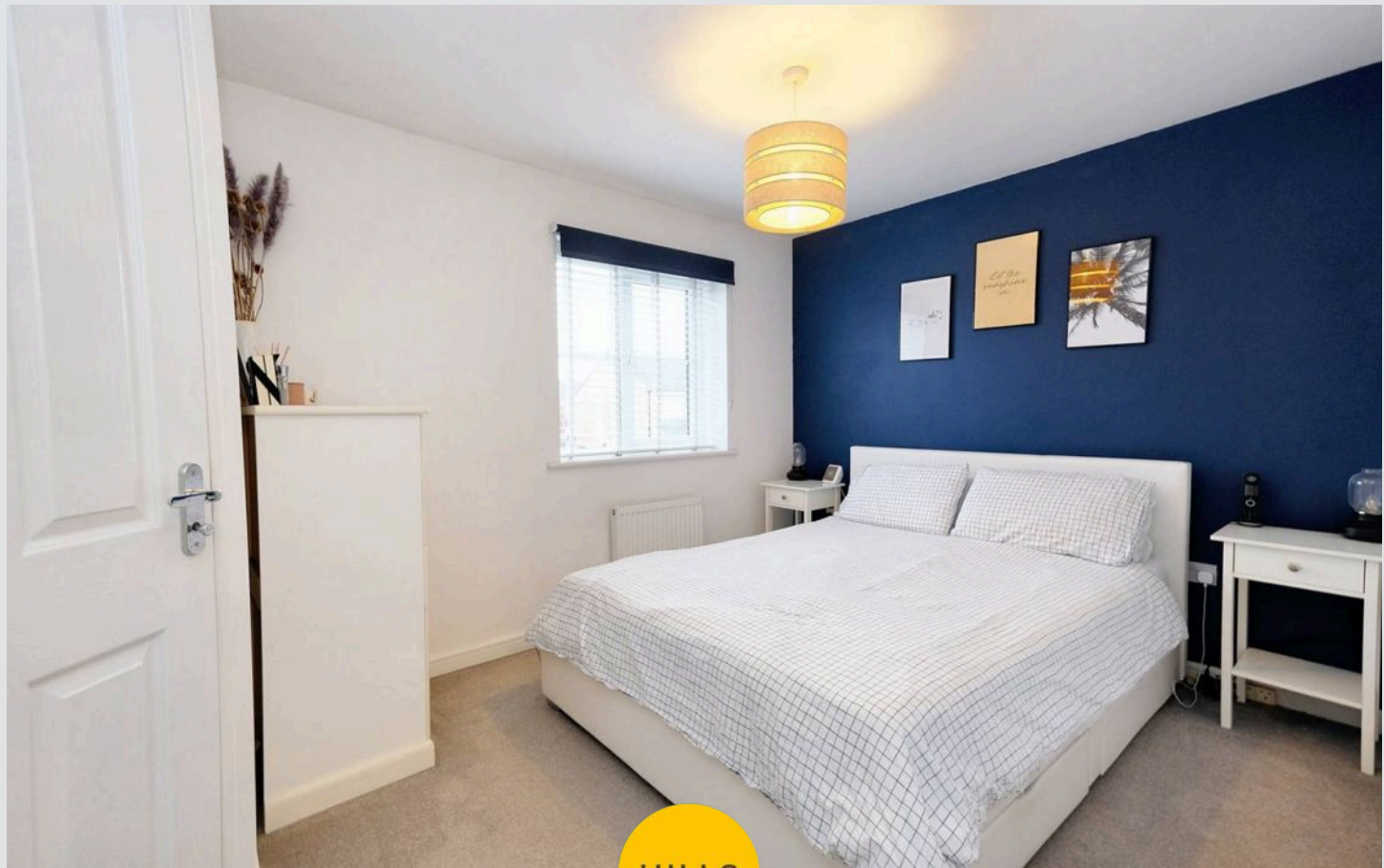
8' 11" x 8' 9" (2.71m x 2.67m)

Bedroom Three

8' 9" x 6' 7" (2.67m x 2.00m)

Bathroom

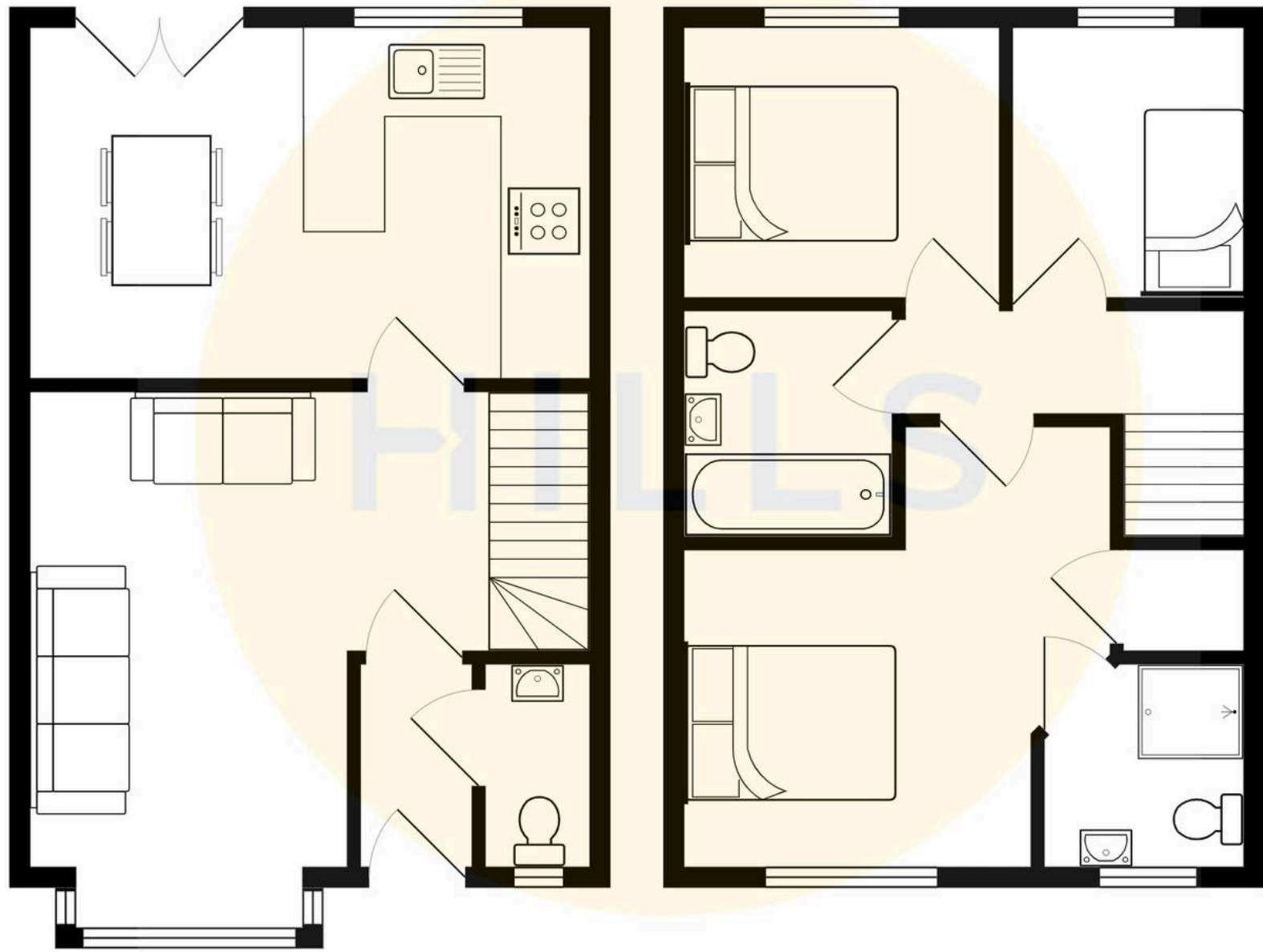
6' 3" x 6' 2" (1.90m x 1.89m)





HILLS







Hills | Salfords Estate Agent

Hills Residential, Sentinel House Albert Street – M30 0SS

0161 707 4900

sales@hills.agency

www.hills.agency/



By law, we are required to conduct anti-money laundering checks on all potential buyers and sellers. In line with HMRC guidelines, our trusted partner, Coadjute, will securely manage these checks on our behalf. A non-refundable fee of £45 + VAT per person will apply, and Coadjute will handle the payment. Once an offer is accepted, Coadjute will send a secure link for you to complete the biometric checks. These checks must be completed before we can send the memorandum of sale to all parties. PLEASE NOTE: The Agent has not tested any equipment, fixtures, fittings or services so cannot verify that they are in working order or fit for the purpose. References to the properties tenure are based on information supplied by the seller. You are advised to check the availability of this property before travelling any distance to view. Every effort has been made to ensure these particulars are correct and not misleading but their accuracy is not guaranteed nor do they form part of any contract.