



Stubbs Drive, SE16

£350,000

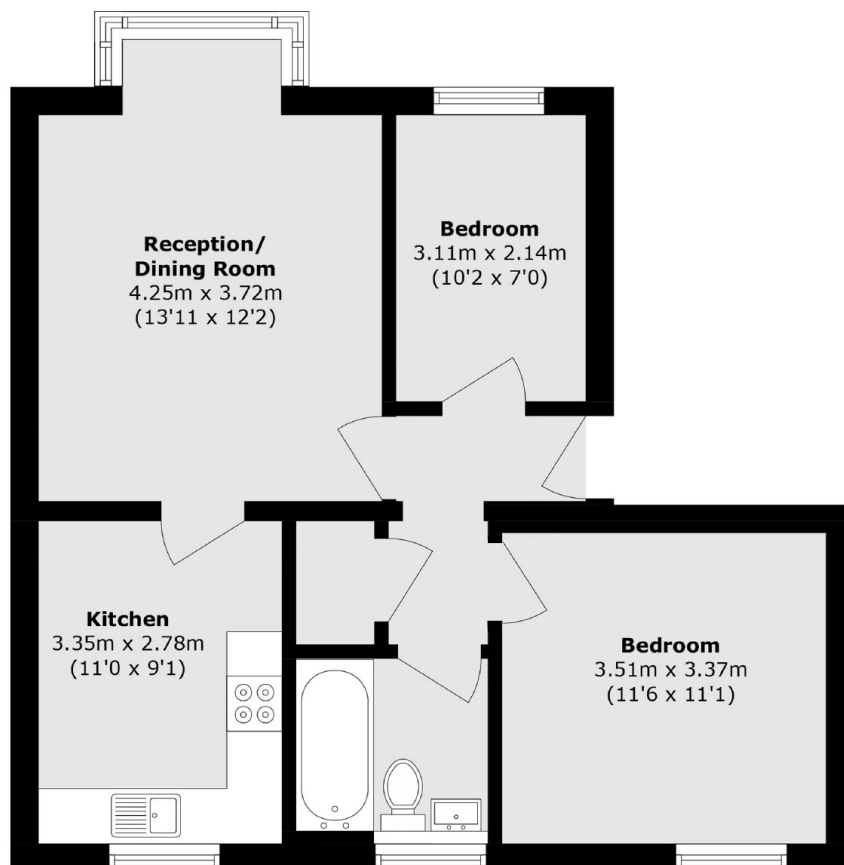
Located within a quiet modern development, this two bedroom flat is in excellent condition and offers a large living space, modern eat in kitchen, spacious bathroom, ample storage and allocated parking space.

Located in a quiet residential development, Constable Court is just 0.2 miles from South Bermondsey Station which is just a seven minute commute to London Bridge. Burgess Park is just a short walk away, as our numerous shops on Old Kent Road.

Features

- Two Bedrooms
- Chain Free
- Communal Garden
- Allocated Parking
- Long Lease
- Fantastic Location

Stubbs Drive,
London, SE16



Total area (approx.): 57.0 sq. m (613.5 sq. ft)