

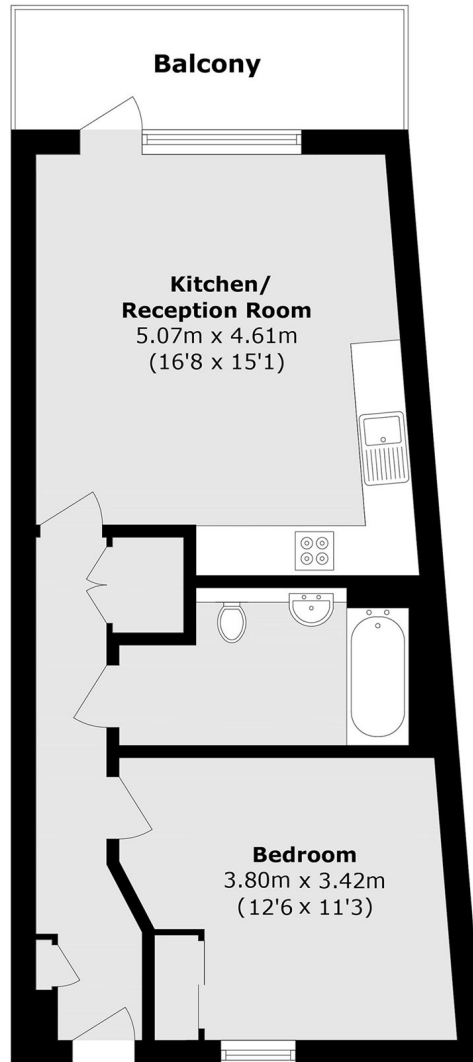


## **Tewkesbury Road, W13**

**£439 pw (£1,900 pcm)**

A large, modern, one bedroom flat, in a popular residential development in West Ealing. The property has an open plan reception room/kitchen, private balcony, modern bathroom and double bedroom.

The property is located on Tewkesbury Road in West Ealing, close to The Broadway and West Ealing station for transport links.



Total area (approx.): 49.6 sq. m (533.8 sq. ft)  
Balcony area (approx.): 6.6 sq. m (71.0 sq. ft)

Robertson Smith & Kempson Ealing Lettings  
1 The Broadway,  
London, W5 2NT  
020 8840 7885  
[ealinglettings@robertsonsmithandkempson.co.uk](mailto:ealinglettings@robertsonsmithandkempson.co.uk)

Energy Rating: B. We aim to make our particulars both accurate and reliable. However they are not guaranteed; nor do they form part of an offer or contract. If you require clarification on any points then please contact us, especially if you're traveling some distance to view. Please note that appliances and heating systems have not been tested and therefore no warranties can be given as to their good working order.