



New Coventry Road
Birmingham



New Coventry Road Birmingham B26 3BA

for sale guide price
£350,000



Property Description

This extended three/four bedroom semi-detached home on New Coventry Road offers generous living space, a bright and modern layout, and excellent family appeal. With its spacious reception areas, practical kitchen, and well-proportioned bedrooms, the property also benefits from a good-sized rear garden which can be used as a drive and convenient access to local amenities and transport links.

Entrance Porch

Carpet.

Entrance Hallway

Laminate flooring, central heating radiator and under stairs storage cupboard.

Downstairs Shower Room

Double glazed window to rear elevation, W.C, wash hand basin, shower, central heating radiator and cupboard housing central heating boiler.

Lounge/ Diner

Bay window to front elevation, central heating radiator, carpet and electric fire.

Reception Room / Bedroom 4

Double glazed window to front elevation, central heating radiator and laminate flooring.

Kitchen

Double glazed windows to rear and side elevations, French doors to rear elevation, single door to rear garden, a range of wall and base units with work surface over incorporating a sink with drainer unit, electric cooker, built in dishwasher, extractor, tiled flooring, space for appliances.

Landing

Double glazed window to side elevation and loft access via hatch.

Bedroom One

Bay window to front elevation, large corner wardrobes, central heating radiator and carpet.

Bedroom Two

Double glazed window to rear elevation and carpet.

Bedroom Three

Double glazed window to front elevation and carpet.

Bathroom

Double glazed window to rear elevation, W.C, his and hers wash hand basins, bidet, shower, central heating radiator, extractor, spotlights and tiling to walls.

Loft Space

Lighting.

Front Garden

Slabbed pathway, shrubs and plants.

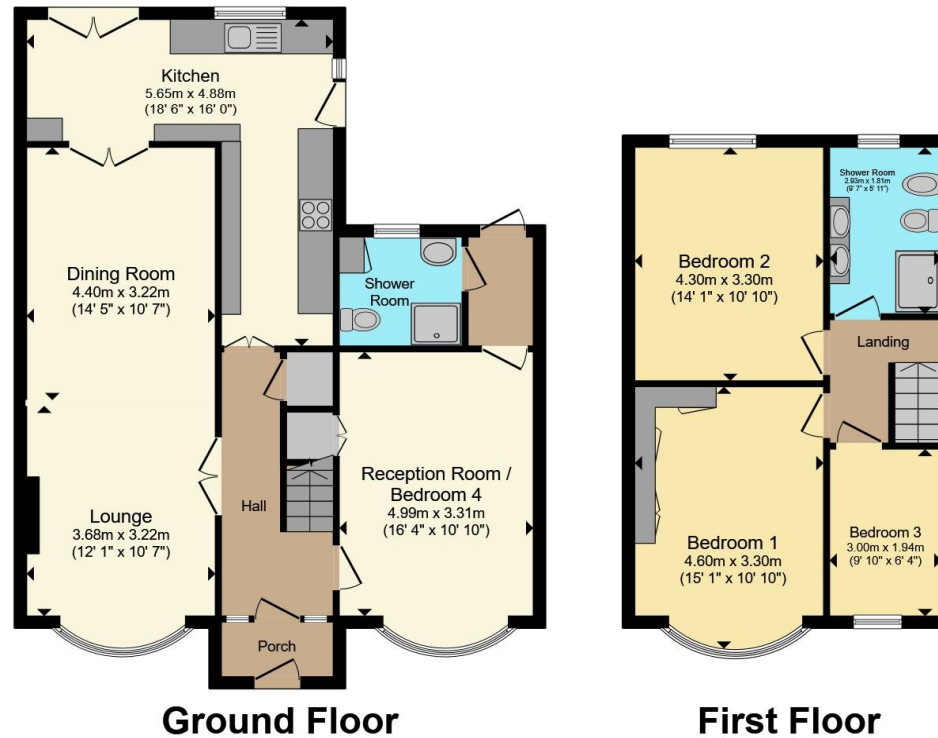
Rear Garden

Slabbed driveway providing off road parking access via secure gates, decked area, outside tap and wooden storage shed.









Total floor area 124.4 m² (1,339 sq.ft.) approx

This floor plan is for illustrative purposes only. It is not drawn to scale. Any measurements, floor areas (including any total floor area), openings and orientation are approximate. No details are guaranteed, they cannot be relied upon for any purpose and they do not form part of any agreement. No liability is taken for any error, omission or misstatement. A party must rely upon its own inspection(s). Powered by www.propertybox.io



To view this property please contact Burchell Edwards on

T 0121 742 1725
E sheldon@burchelledwards.co.uk

2208 Coventry Road Sheldon
 BIRMINGHAM B26 3JH

EPC Rating: D Council Tax
 Band: C

Tenure: Freehold

view this property online burchelledwards.co.uk/Property/SHL211456



1. MONEY LAUNDERING REGULATIONS Intending purchasers will be asked to produce identification documentation at a later stage and we would ask for your co-operation in order that there will be no delay in agreeing the sale. 2. These particulars do not constitute part or all of an offer or contract. 3. The measurements indicated are supplied for guidance only and as such must be considered incorrect. Potential buyers are advised to recheck measurements before committing to any expense. 4. We have not tested any apparatus, equipment, fixtures, fittings or services and it is in the buyers interest to check the working condition of any appliances.

Burchell Edwards is a trading name of Connells Residential which is registered in England and Wales under company number 1489613, Registered Office is Cumbria House, 16-20 Hockliffe Street, Leighton Buzzard, Bedfordshire, LU7 1GN. VAT Registration Number is 500 2481 05.

See all our properties at www.burchelledwards.co.uk | www.rightmove.co.uk | www.zoopla.co.uk

Property Ref: SHL211456 - 0009