



Brafferton Close, Newton Aycliffe
Newton Aycliffe



Offers Over £210,000



Brafferton Close

Newton Aycliffe

This beautifully presented three-bedroom detached home offers stylish, modern living combined with excellent family-friendly space, making it an ideal purchase for families and professionals alike.

The property boasts a bright and spacious open-plan living and dining area that creates a warm and welcoming atmosphere. The contemporary kitchen is fitted with sleek cabinetry, integrated appliances, wooden worktops, and a stylish subway-tile splashback, providing both practicality and modern appeal.

Upstairs, there are three generously sized bedrooms, all thoughtfully designed with built-in storage and plenty of natural light. The principal bedroom benefits from a walk-in wardrobe, creating a luxurious and practical dressing space, while the additional bedrooms provide flexible accommodation for children, guests, or home working. The property also benefits from two modern bathrooms finished to a high standard, featuring contemporary tiling, vanity units, and a walk-in shower.

Externally, the home enjoys excellent kerb appeal with a well-maintained front garden, spacious driveway, and attached garage providing ample off-road parking and additional storage. To the rear, the generous enclosed garden is perfect for both entertaining and family life, featuring a large lawn, decked patio seating area, and privacy fencing creating a peaceful and secluded outdoor space.



Combining stylish interiors, practical living space, and impressive outdoor areas, this superb detached home is ready to move straight into and must be viewed to be fully appreciated.
Council Tax band: C

Tenure: Freehold

- Beautiful 3 Bedroom Detached with Garage
- Modern kitchen with integrated appliances
- Spacious Lounge/Diner
- Master Bedroom with Walk in Wardrobe
- Spacious garden with decked patio
- Master Bedroom with Walk-in-Wardrobe, Further two bedrooms, Stylish modern bathrooms
- Rear Garden with Decked patio area
- Energy Performance Certificate: TBC

Kitchen

12' 6" x 7' 10" (3.82m x 2.40m)

Lounge / diner

17' 5" x 10' 10" (5.31m x 3.29m)

Hallway

8' 9" x 7' 11" (2.67m x 2.42m)

Wc

4' 6" x 4' 5" (1.36m x 1.34m)

Bedroom 1

11' 9" x 10' 6" (3.57m x 3.21m)

Bedroom 2

11' 1" x 10' 2" (3.37m x 3.11m)

Bedroom 3

11' 0" x 7' 1" (3.36m x 2.17m)

Bathroom

9' 7" x 5' 8" (2.92m x 1.72m)

Walk in Wardrobe

5' 9" x 5' 4" (1.74m x 1.62m)

Garage

17' 0" x 8' 3" (5.19m x 2.52m)





Kitchen

12' 6" x 7' 10" (3.82m x 2.40m)

Lounge / diner

17' 5" x 10' 10" (5.31m x 3.29m)

Hallway

8' 9" x 7' 11" (2.67m x 2.42m)

Wc

4' 6" x 4' 5" (1.36m x 1.34m)

Bedroom 1

11' 9" x 10' 6" (3.57m x 3.21m)

Bedroom 2

11' 1" x 10' 2" (3.37m x 3.11m)

Bedroom 3

11' 0" x 7' 1" (3.36m x 2.17m)

Bathroom

9' 7" x 5' 8" (2.92m x 1.72m)

Walk in Wardrobe

5' 9" x 5' 4" (1.74m x 1.62m)

Garage

17' 0" x 8' 3" (5.19m x 2.52m)





FRONT GARDEN

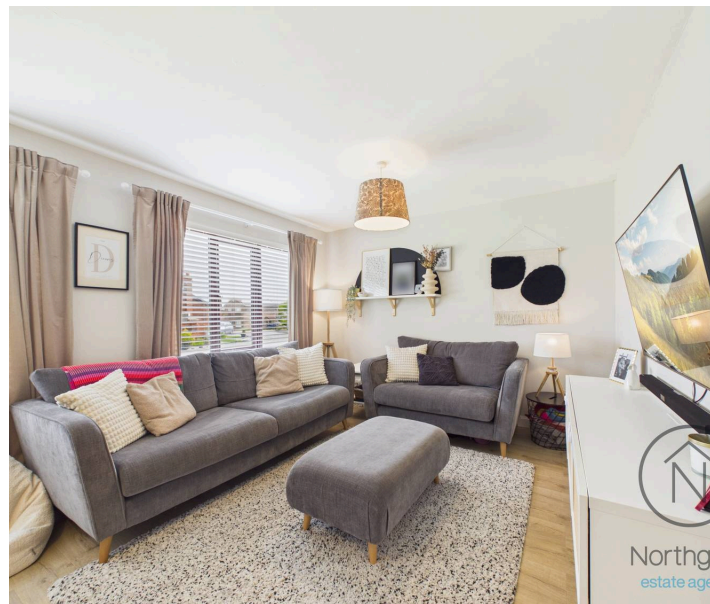
REAR GARDEN

DRIVEWAY

2 Parking Spaces

GARAGE

Single Garage









Northgate
estate agents

Approximate total area⁽¹⁾

1012 ft²

94.1 m²

(1) Excluding balconies and terraces

Calculations reference the RICS IPMS 3C standard. Measurements are approximate and not to scale. This floor plan is intended for illustration only.

GIRAFFE360

Walk in Wardrobe
5'3" x 5'8"
1.62 x 1.74 m

Bathroom
9'6" x 5'7"
2.92 x 1.72 m



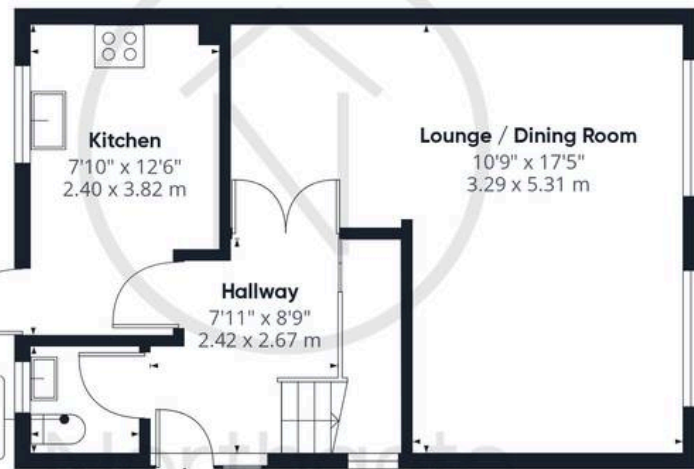
Landing
7'10" x 3'0"
2.41 x 0.92 m

Bedroom 1
10'6" x 11'8"
3.21 x 3.57 m

Bedroom 2
11'0" x 10'2"
3.37 x 3.11 m

Bedroom 3
11'0" x 7'1"
3.36 x 2.17 m

Floor 1 Building 1



Kitchen
7'10" x 12'6"
2.40 x 3.82 m

Lounge / Dining Room
10'9" x 17'5"
3.29 x 5.31 m

Hallway
7'11" x 8'9"
2.42 x 2.67 m

WC
4'4" x 4'5"
1.34 x 1.36 m

Ground Floor Building 1



Garage
17'0" x 8'3"
5.19 x 2.52 m

Ground Floor Building 2

Northgate
estate agents



Northgate - County Durham

Suite 3, Avenue House, Greenwell Road, Newton Aycliffe - DL5 4DH

01325 728333 • info@northgates.net • www.northgates.co.uk/



These particulars do not constitute, nor constitute part of, an offer or contract. No warranties are provided. Verify details through inspection. Northgate estate agents, nor any person in their employment has any authority to make or give any representation or warranty whatever in the relation to this property. All measurements are approximate.