



Connells

Doddridge House Castle Street
Northampton



Property Description

This well presented two-bedroom flat in a convenient residential setting in the heart of Northampton is perfect for all your property wants and needs.

this property features a spacious and inviting living area with access to a private balcony, plenty of natural light that fills the room from its large double glazed windows and a separate kitchen offering ample storage and worktop space. Fully equipped with a cooker suitable for everyday living.

Two well proportioned bedrooms with lots of natural light and calm and cosy feel, offering plenty of the space for storage.

The main family bathroom offers both a bath and shower with plenty of room and built in storage above and below the sink.

This property is a brilliant opportunity for both investment and first time buyers in a desirable location. A standout feature is the private balcony offering that outdoor space to soak up the sun, located near transport links and nearby amenities there's nothing this property hasn't got to offer.



Entrance Hall

Enter via door to the front aspect. Intercom. Double glazed window to the front aspect. Wall mounted radiator.

Lounge

Double glazed window to the rear aspect. Wall mounted radiator. Electric fireplace. Built in cupboards. Door to private balcony.

Kitchen

Wall and base units. Worksurfaces. Sink and drainer unit. Gas hob and oven with hood over. Double glazed window facing the car park.

Bedroom One

Two double glazed windows to the rear and side aspects. Two wall mounted radiators. Built in storage.

Bedroom Two

Two double glazed windows. Wall mounted radiator.

Bathroom

Paneled bath, wash hand basin and low level WC. Storage units. Double glazed window.

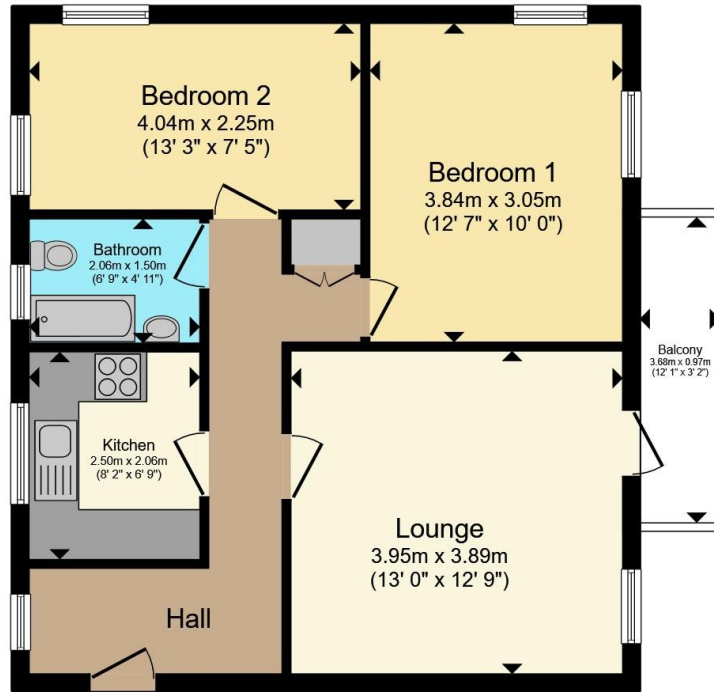
Parking

Parking with fob access.









First Floor

Total floor area 56.0 m² (603 sq.ft.) approx

This floor plan is for illustrative purposes only. It is not drawn to scale. Any measurements, floor areas (including any total floor area), openings and orientation are approximate. No details are guaranteed, they cannot be relied upon for any purpose and they do not form part of any agreement. No liability is taken for any error, omission or misstatement. A party must rely upon its own inspection(s). Powered by www.propertybox.io



To view this property please contact Connells on

T 01604 638 281
E northampton@connells.co.uk

6 Wood Hill
 NORTHAMPTON NN1 2DA

EPC Rating: D Council Tax Band: A

Service Charge: 95.31 Ground Rent: 95.31

Tenure: Leasehold

view this property online connells.co.uk/Property/NHT415125

This is a Leasehold property with details as follows; Term of Lease 113 years from 20 Oct 2014. Should you require further information please contact the branch. Please Note additional fees could be incurred for items such as



1. MONEY LAUNDERING REGULATIONS Intending purchasers will be asked to produce identification documentation at a later stage and we would ask for your co-operation in order that there will be no delay in agreeing the sale. 2. These particulars do not constitute part or all of an offer or contract. 3. The measurements indicated are supplied for guidance only and as such must be considered incorrect. Potential buyers are advised to recheck measurements before committing to any expense. 4. We have not tested any apparatus, equipment, fixtures, fittings or services and it is in the buyers interest to check the working condition of any appliances.

Connells Residential is registered in England and Wales under company number 1489613, Registered Office is Cumbria House, 16-20 Hockliffe Street, Leighton Buzzard, Bedfordshire, LU7 1GN. VAT Registration Number is 500 2481 05.

See all our properties at www.connells.co.uk | www.rightmove.co.uk | www.zoopla.co.uk

Property Ref: NHT415125 - 0002