

Ringwood Road
Bridgwater
TA6 6BP




JOSEPH CASSON
the estate agency your home deserves




JOSEPH CASSON
estate agency
01278 258005 | 01823 740051
FOR SALE





£189,950

- Spacious Semi-Detached Property
 - Two bedrooms
 - One Bathroom
 - Kitchen
 - Dining Room
 - Enclosed Garden
 - Garage
- Double Glazed & Gas Central Heating

NO ONWARD CHAIN. This spacious two-bedroom, extended semi-detached property is ideally located in a sought-after area of Bridgwater. With no onward chain, it offers an exceptional opportunity for those eager to move in without any delay.

ACCOMODATION

The well-presented home boasts gas central heating and double glazing throughout. The ground floor comprises an entrance hallway, a bright and airy lounge, dining room and kitchen that opens to the garden. Upstairs there are two bedrooms along with a shower room. Outside, the property benefits from a split level rear garden with access to a garage beyond, providing both privacy and practicality.

LOCATION

Situated in a popular residential area, the home offers easy access to the local amenities of Bridgwater, including schools, shops, and transport links. Whether you're commuting or looking to explore the wider Somerset area, this property makes an ideal base with its close proximity to major roadways and public transport options.

ADDITIONAL INFORMATION

Tenure: Freehold

Estate/Management Charge: None

EPC Rating: D

Council Tax Band: A

UTILITIES

Water supply: Mains

Sewerage: Mains

Electricity Supply: Mains

Mains Gas Supply: yes

Central Heating: Yes - Gas





FLOODING

No Flooding in the last 5 years. Flood Information: flood-map-for-planning.service.gov.uk/location

BROADBAND & MOBILE COVERAGE

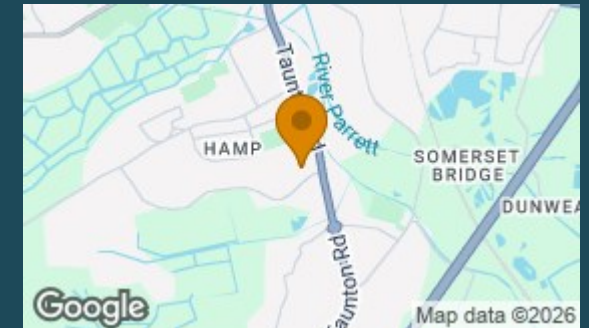
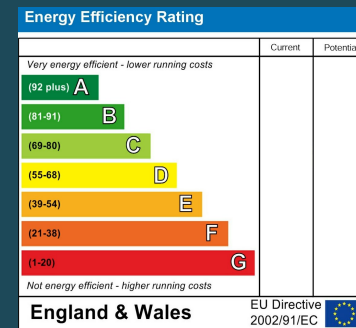
For an indication of specific speeds and supply or coverage in the area, we recommend that potential buyers use the Ofcom checkers below:

checker.ofcom.org.uk/en-gb/mobile-coverage

checker.ofcom.org.uk/en-gb/broadband-coverage

Council Tax Band

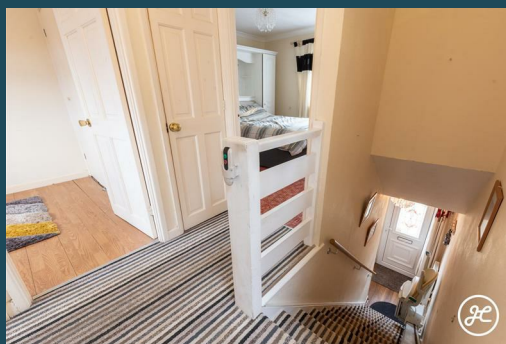
A



Agents Note: Whilst every care has been taken to prepare these particulars, they are for guidance purposes only. All measurements are approximate and are for general guidance purposes only and whilst every care has been taken to ensure their accuracy, they should not be relied upon and potential buyers/tenants are advised to recheck the measurements



Joseph Casson Estate Agency -
Bridgwater
1 Friarn Lawn
Bridgwater
Somerset
TA6 3LL



Contact
01278258005
office@josephcasson.co.uk
www.josephcasson.co.uk



JOSEPH CASSON

the estate agency your home deserves