

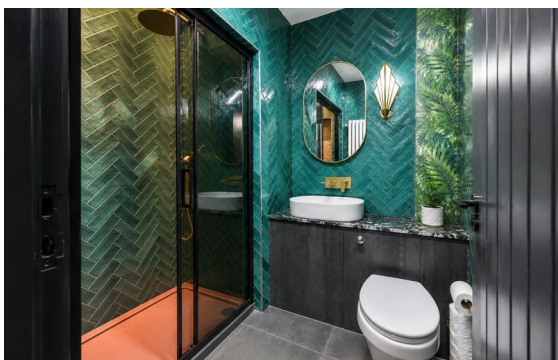
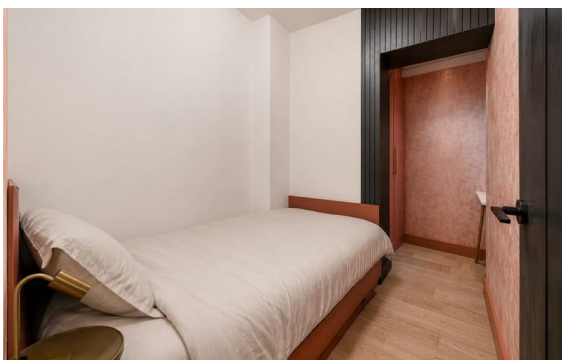


Lady Somerset Road, Kentish Town, London, NW5

Rent £624 Per Month

2 Bed | 2 Bath | 1 Reception

Please call us on 020 7724 2233 or email us info@newingtonstates.com to book a viewing.



A stylish two bedroom, two bathroom apartment set on the desirable Lady Somerset Road, offered fully furnished and finished to an excellent standard throughout.

The property features a bright and spacious reception room, a separate fully fitted kitchen, two well sized bedrooms and two modern bathrooms, including an ensuite to the principal bedroom. Residents also benefit from access to a well maintained communal garden.

Ideally located close to the cafes, restaurants and shops of Kentish Town Road and Fortess Road, with excellent transport links via Tufnell Park Underground Station (Northern Line). Hampstead Heath is also within easy reach.

Energy Efficiency Rating: C

Agents Note: Whilst every care has been taken to prepare these particulars, they are for guidance purposes only. All measurements are approximate and are for general guidance purposes only and whilst every care has been taken to ensure their accuracy, they should not be relied upon and potential buyers/tenants are advised to recheck the measurements.

NEWINGTON
— ESTATES —

60 Upper Montagu Street

London

W1H 1SN

020 7724 2233

info@newingtonestates.com

<http://www.newingtonestates.com>