



Connells

Wallace House Lammas Walk
Warwick



Property Description

A fantastic opportunity for first-time buyers or investors, this one-bedroom apartment is ideally situated within the popular Lammas Walk development, just a short distance from Warwick town centre.

This charming home boasts a bright and spacious living area with a lovely balcony, a fitted kitchen, a double bedroom, and a bathroom. It benefits from recently installed new windows, providing improved energy efficiency .

Lammas Walk is ideally located for easy access to local shops and amenities, Warwick racecourse, golf course and parks for nice walks nearby. The location is also ideal for good schooling, Aylesford School and Newburgh Primary School are both a short walk away.

The property is a 15 minute walk into the historic Warwick town centre and its famous Warwick Castle. Warwick is a market town which offers a great selection of High Street & independent shops as well as a wide range of restaurants, bars and coffee shops.

The property is a short 6 minute drive to St Michaels Hospital and a short 9 minute drive to Warwick hospital, perfect for health care professionals looking for a short commute. The location is perfect for national commuters as is only a short drive to the A46, M40 and Warwick Parkway park and ride train line for frequent visitors to London.

Auctioneer's Comments

This property is offered through Modern Method of Auction. Should you view, offer or bid your data will be shared with the Auctioneer, iamsold Limited. This method requires both parties to complete the transaction within 56 days, allowing buyers to proceed with mortgage finance (subject to lending criteria, affordability and survey).

The buyer is required to sign a reservation agreement and make payment of a non-refundable Reservation Fee of 4.5% of the purchase price including VAT, subject to a minimum of £6600.00 including VAT. This fee is paid in addition to purchase price and will be considered as part of the chargeable consideration for the property in the calculation for stamp duty liability. Buyers will be required to complete an identification process with iamsold and provide proof of how the purchase would be funded.

The property has a Buyer Information Pack containing documents about the property. The documents may not tell you everything you need to know, so you must complete your own due diligence before bidding. A sample of the Reservation Agreement and terms and conditions are contained within this pack. The buyer will also make payment of no more than £349 inc. VAT towards the preparation cost of the pack. Please confirm exact costs with the auctioneer.

The estate agent and auctioneer may recommend the services of other providers to you, in which they will be paid for the referral. These services are optional, and you will be advised of any payment, in writing before any services are accepted. Listing is subject to a start price and undisclosed reserve price that can change.

Entrance Hall

Storage cupboard and cupboard housing water tank.

Lounge Diner

15' x 9' 7" (4.57m x 2.92m)

New French doors opening to balcony.

Kitchen

8' 6" x 6' 2" (2.59m x 1.88m)

Fitted with a range of wall and base units, space for washer, fridge and cooker.

Bedroom One

9' 9" x 8' 11" (2.97m x 2.72m)

Window to rear, storage cupboard and wardrobe.

Bathroom

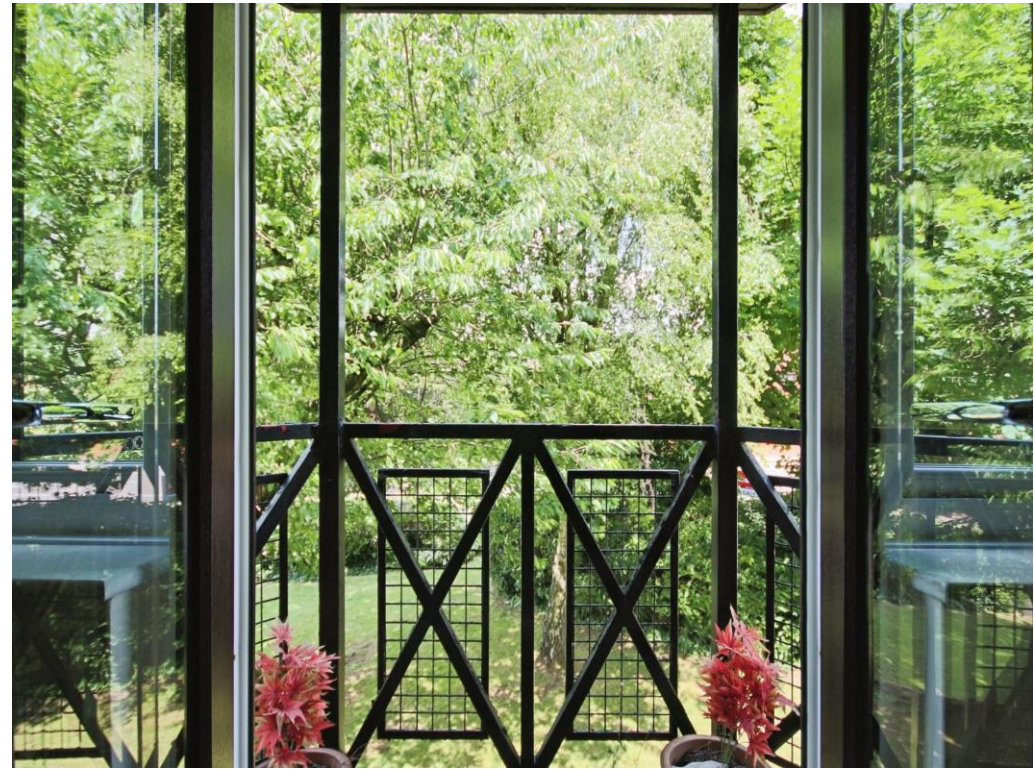
Wash hand basin, bath, WC and store cupboard.

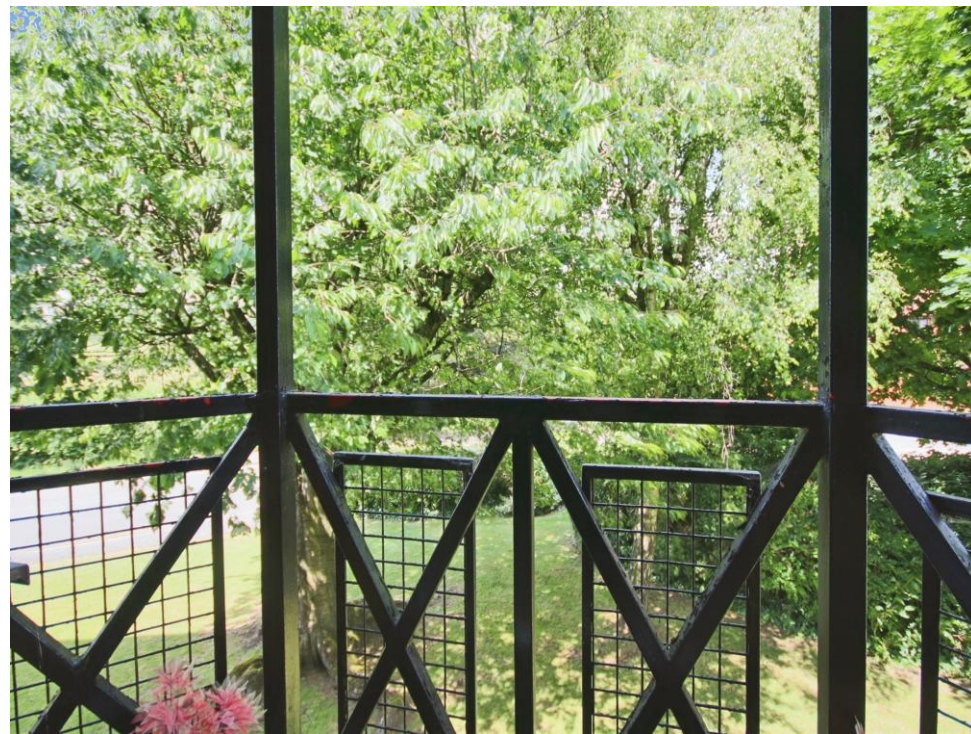
Parking

One allocated parking space.

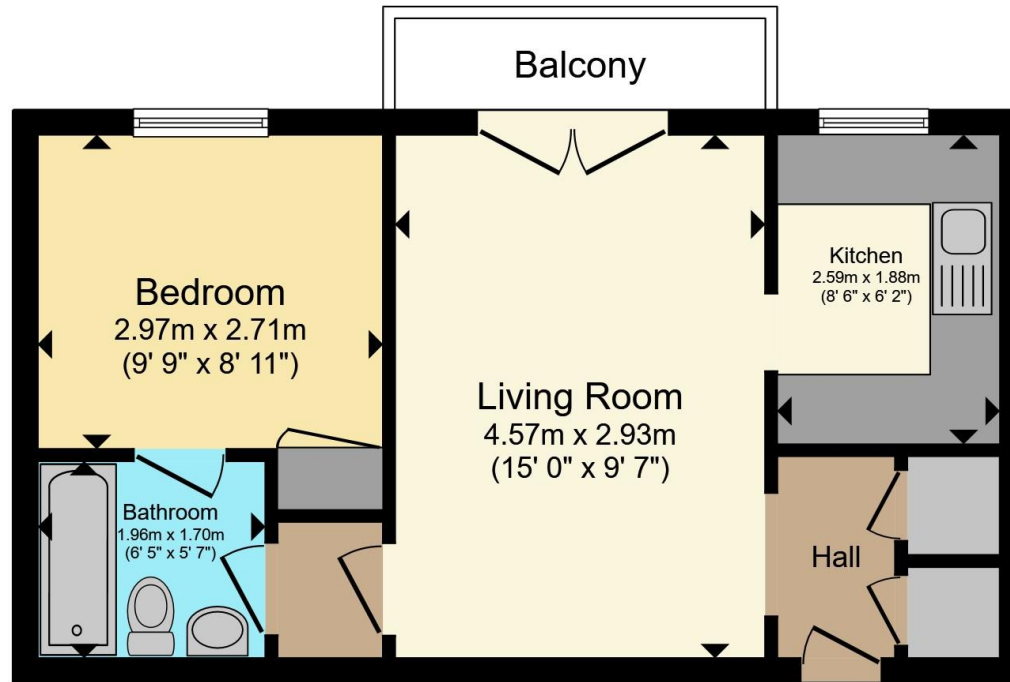
Vendors Notes

Electric heating and new windows.









Ground Floor

Total floor area 37.3 m² (401 sq.ft.) approx

This floor plan is for illustrative purposes only. It is not drawn to scale. Any measurements, floor areas (including any total floor area), openings and orientation are approximate. No details are guaranteed, they cannot be relied upon for any purpose and they do not form part of any agreement. No liability is taken for any error, omission or misstatement. A party must rely upon its own inspection(s). Powered by www.propertybox.io

Connells

To view this property please contact Connells on

T 01926 403308
E warwick@connells.co.uk

14 High Street
 WARWICK CV34 4AP

EPC Rating: C Council Tax
 Band: B

Service Charge: 950.00 Ground Rent:
 80.00

Tenure: Leasehold

view this property online connells.co.uk/Property/WAR107458

This is a Leasehold property with details as follows; Term of Lease 99 years from 25 Mar 1987. Should you require further information please contact the branch. Please Note additional fees could be incurred for items such as



1. MONEY LAUNDERING REGULATIONS Intending purchasers will be asked to produce identification documentation at a later stage and we would ask for your co-operation in order that there will be no delay in agreeing the sale. 2. These particulars do not constitute part or all of an offer or contract. 3. The measurements indicated are supplied for guidance only and as such must be considered incorrect. Potential buyers are advised to recheck measurements before committing to any expense. 4. We have not tested any apparatus, equipment, fixtures, fittings or services and it is in the buyers interest to check the working condition of any appliances.

Connells Residential is registered in England and Wales under company number 1489613, Registered Office is Cumbria House, 16-20 Hockliffe Street, Leighton Buzzard, Bedfordshire, LU7 1GN. VAT Registration Number is 500 2481 05.

See all our properties at www.connells.co.uk | www.rightmove.co.uk | www.zoopla.co.uk

Property Ref: WAR107458 - 0004