



**WETHERELL**  
MAYFAIR'S FINEST PROPERTIES



## SOUTH AUDLEY STREET, W1K

£1,195,000

An immaculately presented first floor, one bedroom apartment of 710 sq ft in a prime Mayfair location.

This lateral apartment has been finished to an exceptional standard throughout with superb detailing and high quality finish. Upon entry is a wide hallway leading on to each individual room. There is a bright 17' reception room, separate kitchen with built in appliances, large bedroom with plenty of built in wardrobes and a smart bathroom. The apartment benefits from lift access, a 24hr uniformed porter and a share of freehold.

Chesterfield House was built in the 1930's and is located just off Curzon Street and South Audley Street.

ONLY MOMENTS FROM THE OPEN SPACES OF HYDE PARK AND THE BOUTIQUE SHOPS OF MOUNT STREET. THE NEAREST UNDERGROUND STATION IS GREEN PARK.



## FEATURES

- One Bedroom • One Bathroom • First Floor • Lift • 24 Hour Uniformed Porter • Share of Freehold •

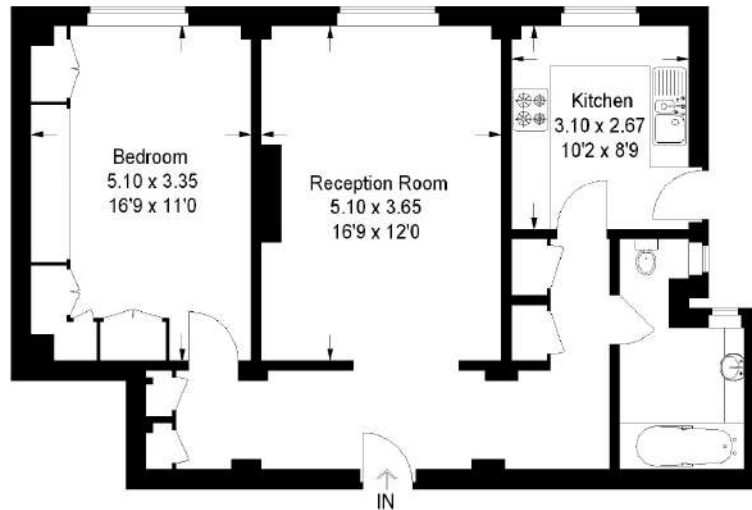




# SOUTH AUDLEY STREET, LONDON, W1K

## South Audley Street, W1K

Approximate Gross Internal Area  
66 sq m / 710 sq ft



**First Floor**

Illustration for identification purposes only, measurements are approximate,  
not to scale. FloorplansUsketch.com © 2014 (ID97680)



**WETHERELL**  
MAYFAIR'S FINEST PROPERTIES

102 Mount Street,  
London, W1K 2TH

T: 020 7529 5566

E: [sales@wetherell.co.uk](mailto:sales@wetherell.co.uk)

We aim to make our particulars both accurate and reliable.  
However they are not guaranteed; nor do they form part of an  
offer or contract. If you require clarification on any points then  
please contact us, especially if you're traveling some distance  
to view. Please note that appliances and heating systems have  
not been tested and therefore no warranties can be given as  
to their working order.

[wetherell.co.uk](http://wetherell.co.uk)