



Mountain View Far Hill

Bradwell, Hope Valley, S33 9HR

Offers Over £400,000



Mountain View Far Hill



Description

Offers Over £400,000

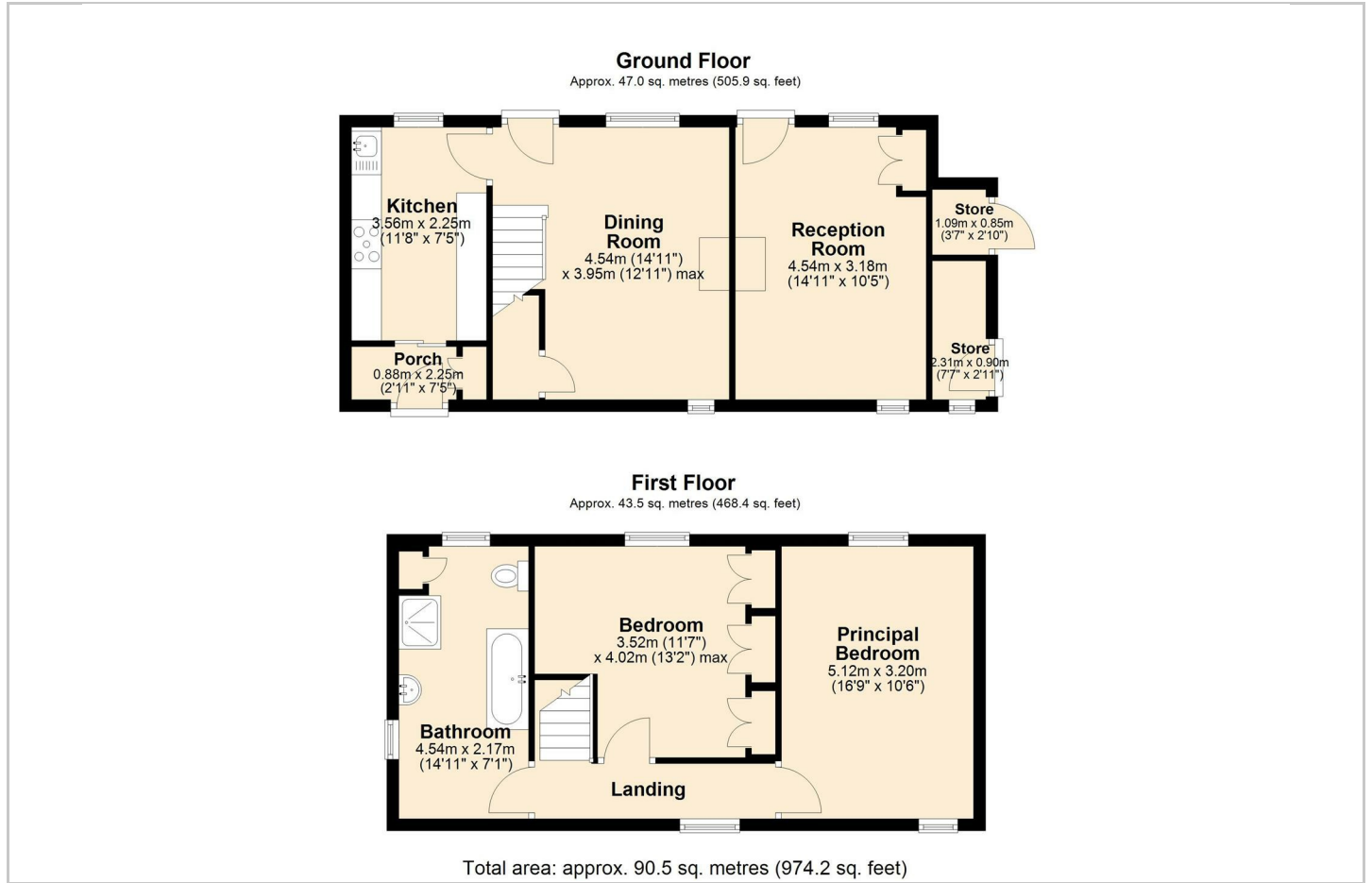
Mountain View offers all that its name suggests; a picture perfect, two double bedroom period cottage with stunning views across the Hope Valley. The property has been fully upgraded whilst retaining original features and includes new luxury kitchen with utility room, two reception rooms with feature central log burner and UPVC glazed doors, that lead to the front garden. Upstairs there are two spacious double bedrooms and a contemporary bathroom suite. Externally, the property has those stunning views will never become tiresome, a driveway to the rear and a split level front garden including patio, entertaining spaces and log store. There is also a rear seating area and the property benefits from solar panels and character features throughout. Offered for sale with no onward chain; this is one not to be missed!

- Stunning period cottage in Bradwell
- Modern, high-specification kitchen with quartz worktops
- Contemporary bathroom suite
- Stunning split level front garden with summer house
- Gardens to front and rear with entertaining spaces
- Two spacious double bedrooms
- Feature central logburner to both reception rooms
- Private driveway and solar panels
- Available with no onward chain
- Character features throughout including beams





Floor Plan



Area Map



Viewing

Please contact our ELR Hathersage Office on 01433 651888 if you wish to arrange a viewing appointment for this property or require further information.

These particulars, whilst believed to be accurate are set out as a general outline only for guidance and do not constitute any part of an offer or contract. Intending purchasers should not rely on them as statements of representation of fact, but must satisfy themselves by inspection or otherwise as to their accuracy. No person in this firm's employment has the authority to make or give any representation or warranty in respect of the property.

Eadon Lockwood and Riddle Main Road, Hathersage, Hope Valley, S32 1BB
Tel: 01433 651888 Email: peakdistrict@elr.co.uk <https://www.elr.co.uk>

Energy Efficiency Graph

