



Haverstock Hill, NW3

£600,000

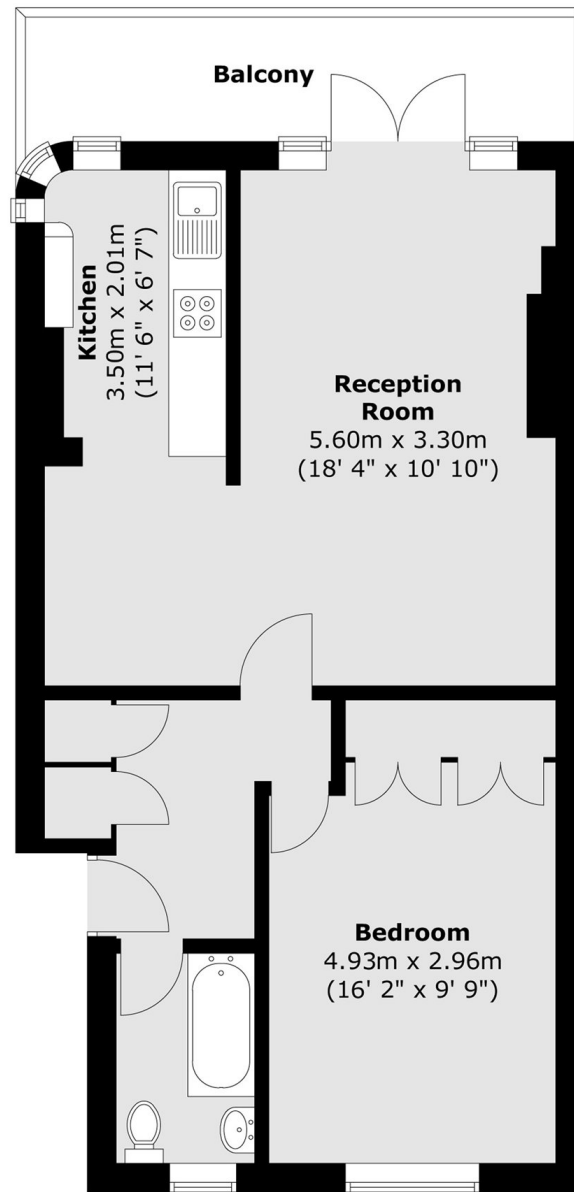
A spacious one bedroom apartment featuring a private balcony accessed from the reception room and a separate kitchen. The property is presented in good condition throughout and benefits from a long lease and low outgoings.

Located in the heart of Belsize Park, the property is moments from the cafés, restaurants, and boutiques of Haverstock Hill and England's Lane. Hampstead Heath and Primrose Hill are both within easy reach. Transport links include Belsize Park underground station (Northern line) and Swiss Cottage underground station (Jubilee line).

Features

- One Double Bedroom
- Excellent Location
- Northern Line
- Balcony
- Chain Free
- Low Outgoings

Haverstock Hill, London, NW3



Total area (approx.): 54.1 sq. m (582.3 sq. ft)
Balcony area (approx.): 6.9 sq. m (74.0 sq. ft)