

KINGS
ESTATES

£360,000

42 Westfield Road, Chandler's Ford, Eastleigh, SO53 3GW **Freehold**



Welcome to
42 Westfield Road

Kings Estates are delighted to present this gorgeous three bed semi-detached house on Westfield Road! The house is suitable for First Time Buyers, Families upsizing and Investment buyers alike.

Externally, the property boasts a large front and rear garden with an extension on the side. To the rear there is a garage off the back of the garden and a storage shed. The property is additionally fitted with solar panels. The interior of the property is well presented with two bathrooms and a kitchen that have been fully modernised, ready for a buyer to move in.

The property is being sold with NO CHAIN, making it a great option for those looking for a quicker sale. Situated close to local amenities such as the Chandlers Ford train station and the local shops just a stones throw away.



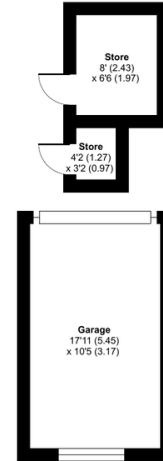
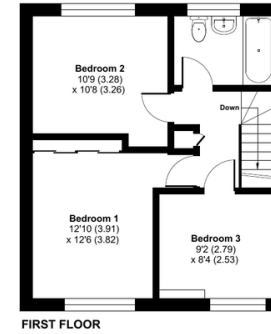
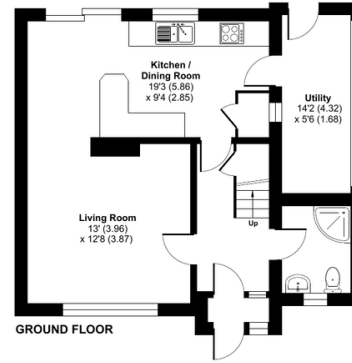
EPC Rating: C
Council Tax Band: C



Floorplan

Westfield Road, Chandler's Ford, Eastleigh, SO53

Approximate Area = 1013 sq ft / 94.1 sq m
 Garage = 186 sq ft / 17.2 sq m
 Outbuildings = 65 sq ft / 6 sq m
 Total = 1264 sq ft / 117.3 sq m
 For identification only - Not to scale



ⓘ Floor plan produced in accordance with RICS Property Measurement Standards incorporating International Property Measurement Standards (IPMS2 Residential). © rchecom 2026. Produced for Kings Estates. REF: 1449568

Property Features

- NO CHAIN
- MODERN PRESENTATION
- GARAGE
- THREE BEDROOMS
- LARGE GARDEN
- UTILITY ROOM
- SOLAR PANELS
- TWO BATHROOMS
- POND
- CLOSE TO AMENITIES

Kings Estates

253 Portswood Road, Southampton, Hampshire, SO17 2NG

www.kingsestates.net

E. southamptonsales@kingsestates.net

T. 02380 553355

W. www.kingsestates.net

Zoopa.co.uk

rightmove



Agents Note: Whilst every care has been taken to prepare these sales particulars, they are for guidance purposes only. All measurements are approximate and are for general guidance purposes only and whilst every care has been taken to ensure their accuracy, they should not be relied upon and potential buyers are advised to recheck the measurements.



£360,000

☎ 02380 553355

KINGS
ESTATES