

PALACE COURT, W2



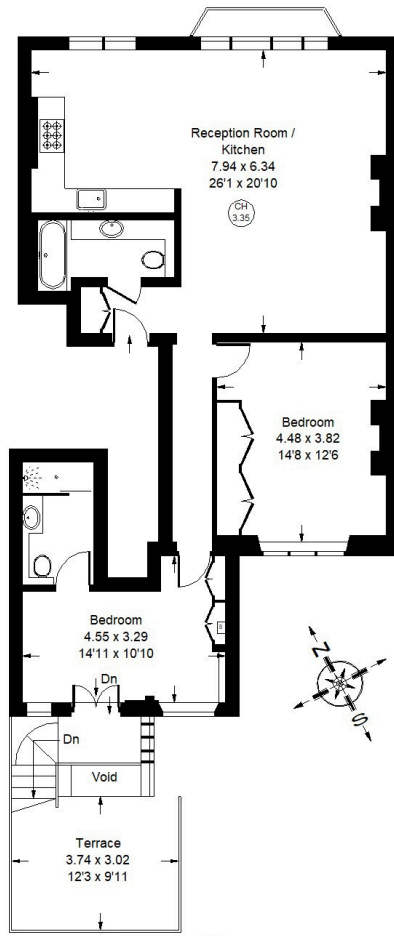


Palace Court, W2

Located in the highly prestigious Palace Court which is moments away from Hyde Park, this immaculate second floor apartment is situated in a stunning red brick building and offers well-proportioned living space with a light open-plan kitchen, dining and reception room. The apartment features high ceilings and large windows which fills the space with natural light and provide stunning views over neighbouring period properties. There are two double bedrooms, two bathrooms and the principal bedroom gives access to the westerly-facing roof terrace which has views towards Notting Hill. Palace Court is a wonderful road of grand period buildings just moments from the vast green open spaces of Kensington Gardens, whilst there are excellent transport links close by on Notting Hill Gate providing access to the Central, District & Circle lines. The fabulous array of fashionable boutique shops, cafes and restaurants of Westbourne Grove are also close by.



Approx. Gross Internal Area
= 89.84 sq m / 967 sq ft



Second Floor



Palace Court, W2 - Share of Freehold Local Authority - City of Westminster

- Two Double Bedrooms
- High Ceilings
- Roof Terrace
- EPC rating: C
- Council tax band: F



Whilst every attempt has been made to ensure the accuracy of the floor plan, measurements are approximate and not to scale. No guarantee is given on the total square footage of the property quoted on the plan. Figures given are for guidance. Plan is for illustration purposes only, not to be used for valuations.