



TRYON APARTMENTS, TW3

£1,350 pcm

Located on the second floor of the popular Tryon Apartments (part of the Central House development), this modern 358 sq/ft studio features extensive glazing that runs the entire length of the property. The design maximises natural light and offers views over the landscaped communal gardens, complete with a designer open-plan kitchen, lounge area, and

- Abundant Natural Light
- Views of Landscaped Gardens
- Seconds to Piccadilly Line
- Professional Daytime Concierge

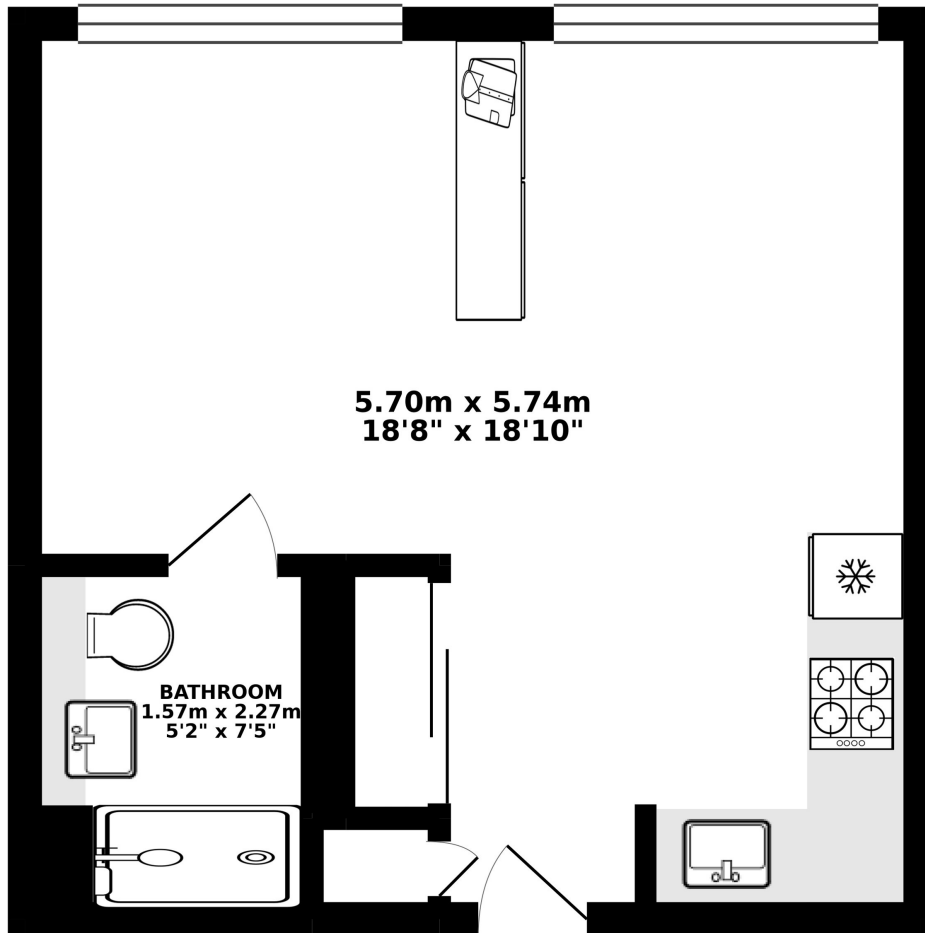


ABOUT THE HOME

Perfectly positioned in the heart of Hounslow, this property sits just seconds away from Hounslow Central Station for seamless Piccadilly Line access. Residents benefit from being moments from the vibrant high street alongside the convenience of an on-site daytime concierge service.







TOTAL FLOOR AREA : 33.29 sq. m. (358.36 sq. ft.) approx.

Whilst every attempt has been made to ensure the accuracy of the floorplan contained here, measurements of doors, windows, rooms and any other items are approximate and no responsibility is taken for any error, omission or mis-statement. This plan is for illustrative purposes only and should be used as such by any prospective purchaser. The services, systems and appliances shown have not been tested and no guarantee as to their operability or efficiency can be given.

Made with Metropix ©2019



LiFE RESIDENTIAL

203 Trentham Court, Victoria
Road, London, W3 6BT
Sales: 020 3668 1112
Lettings: 020 3668 1111

Energy Rating: C. We aim to make our particulars both accurate and reliable. However they are not guaranteed; nor do they form part of an offer or contract. If you require clarification on any points then please contact us, especially if you're traveling some distance to view. Please note that appliances and heating systems have not been tested and therefore no warranties can be given as to their good working order.