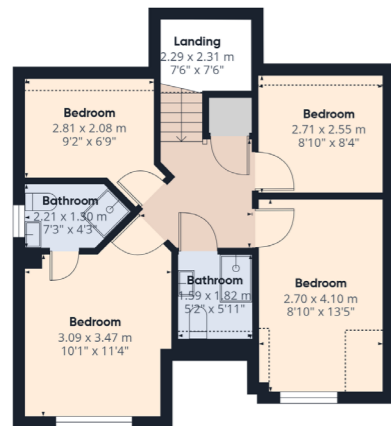




Guide Price £425,000 - £450,000

Moorhaven Close,  
Torquay, TQ1 4AA

A superb 4/5 bedroom detached executive style house situated in an exclusive small development built by Linden Homes in 2012 on the boarder of Shiphay. The property is located close to local schools, amenities and bus routes and is just a short walk to the train statin with the seafront beyond. The property is presented to an incredibly high standard and offers spacious accommodation. Comprising of a large kitchen/dining/snug area with a high end recently fitted Howdens kitchen, beautifully appointed with a range of integrated appliances, cloak, lounge with French doors out to garden, a ground floor bedroom which can alternatively be used as as a study/home office. Upstairs are a four bedrooms, the master having an ensuite, there is also a beautifully presented bathroom. Outside the property benefits from private parking and garage. The rear garden is furnished to a high standard and landscaped to created a friendly area.



uPVC door into:-

**KITCHEN/DINER/SNUG** A beautifully fully appointed and spacious kitchen/diner fitted with a range of contemporary wall and base units. There is also a range of integrated appliances to include oven and grill and microwave, induction hob and hood, integrated fridge/freezer and integrated washing machine. There is a fabulous island/breakfast bar with seating and also the dining room has space for 6/8 seater dining table along with a snug area and French doors leading out to patio/garden. Windows to front, two radiators and hemming bone flooring.

**CLOAK** Low level WC, wash hand basin with vanity surround, obscure window to back and radiator.

**LOUNGE** A bright and airy lounge with feature panelled wall, French doors out to patio/garden.

**BEDROOM FIVE** A good sized ground floor bedroom that can alternatively be used as a study/home office.

**BEDROOM ONE** A beautifully presented major bedroom with vaulted ceiling, arched window to front and radiator.

**ENSUITE** Corner shower cubicle, low level WC, hand wash basin with vanity surround, wall hung radiator and window to side.

**BEDROOM TWO** A good size double bedroom, window to front and radiator.

**BEDROOM THREE** A good size bedroom, two Velux windows and radiator.

**BEDROOM FOUR** Another good sized bedroom and two Velux windows.

**BATHROOM** Bath with glass shower cover with shower over bath, low level WC, wash hand basin, wall hung radiator and Velux window.

**OUTSIDE** At the front is parking for two cars and garage. At the back is a private sunny enclosed garden with a large patio area, a lawned area and a further sunken seating area. A well maintained shed and door into garage.

Address 'Moorhaven Close, Torquay, TQ1 4AA'

Tenure 'Freehold'

Council Tax Band 'D'

EPC Rating '75 | C'

Taylor's Estate Agents  
256 Torquay Road  
Paignton  
TQ3 2EZ