



hamlyn  
smith.


Wantley Hill Estate, Henfield, BN5 9JN

£375,000 - £400,000

# hamlyn smith.

 4 Bedrooms

 1 Reception

 1 Bathroom

GUIDE PRICE £375,000 - £400,000 | Nestled in the desirable Wantley Hill Estate in Henfield, this charming end-terrace house offers a delightful blend of comfort and practicality. Spanning an impressive 1,087 square feet, the property boasts four well-proportioned bedrooms, making it an ideal family home.

- 4 spacious bedrooms
- End of terrace house
- Lovely rear garden views
- Open-plan living dining area
- Separate kitchen space
- Conservatory as utility room
- Attic bedroom retreat
- Built in 1983





50 Goldstone Villas, Hove, BN3 3RS

01273 762222

hello@hamlynsmith.co.uk

Upon entering, you are greeted by a spacious living and dining area that creates a warm and inviting atmosphere, perfect for both relaxation and entertaining. The open-plan design seamlessly connects to a separate kitchen, which is well-equipped for all your culinary needs. A lovely conservatory, currently utilised as a utility space, provides additional versatility and direct access to the rear garden.

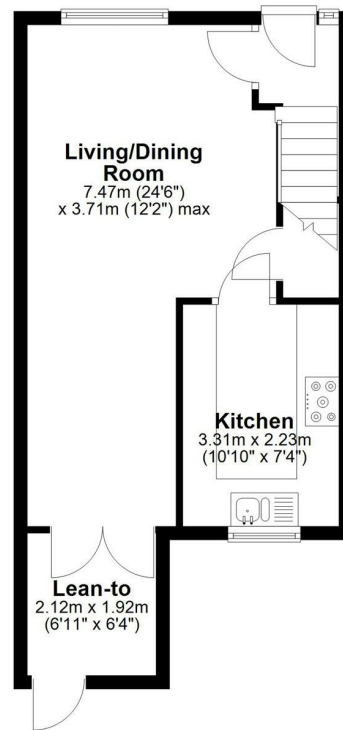
The outdoor space is a true highlight, featuring a well-maintained garden that offers lovely views, perfect for enjoying the fresh air or hosting summer gatherings. A spacious shed provides ample storage for gardening tools and outdoor equipment.

The first floor comprises three comfortable bedrooms, along with a family bathroom that caters to all your needs. An additional bedroom is located in the attic, providing a private retreat or a perfect space for guests.

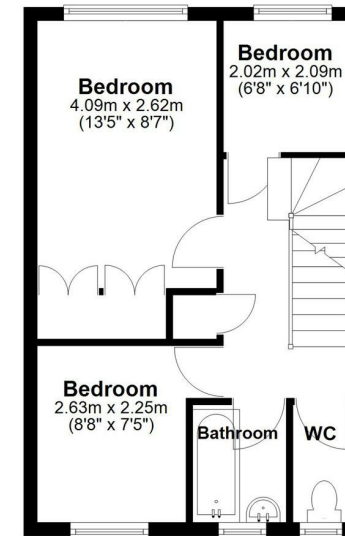
Built in 1983, this property combines modern living with a homely feel, making it a wonderful opportunity for those seeking a peaceful yet convenient lifestyle. With its proximity to local amenities and the picturesque surroundings of Henfield, this home is not to be missed. Whether you are a growing family or looking for a spacious residence, this end-terrace house is sure to impress.



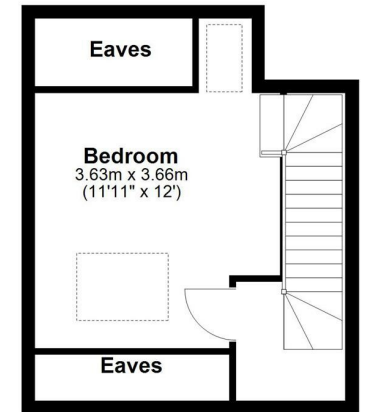
Ground Floor



First Floor



Second Floor



Total area: approx. 94.1 sq. metres (1012.5 sq. feet)

Whilst every attempt has been made to ensure the accuracy of the floor plan contained here, measurements of doors, windows, rooms and any other items are approximate and no responsibility is taken for any error, omission or mis-statement. This plan is for illustrative purposes only and should be used as such by any prospective purchaser. The services, systems and appliances shown have not been tested and no guarantee as to their operability or efficiency can be given. Plan produced using PlanUp.

