



3

Bedrooms



1

Bathroom

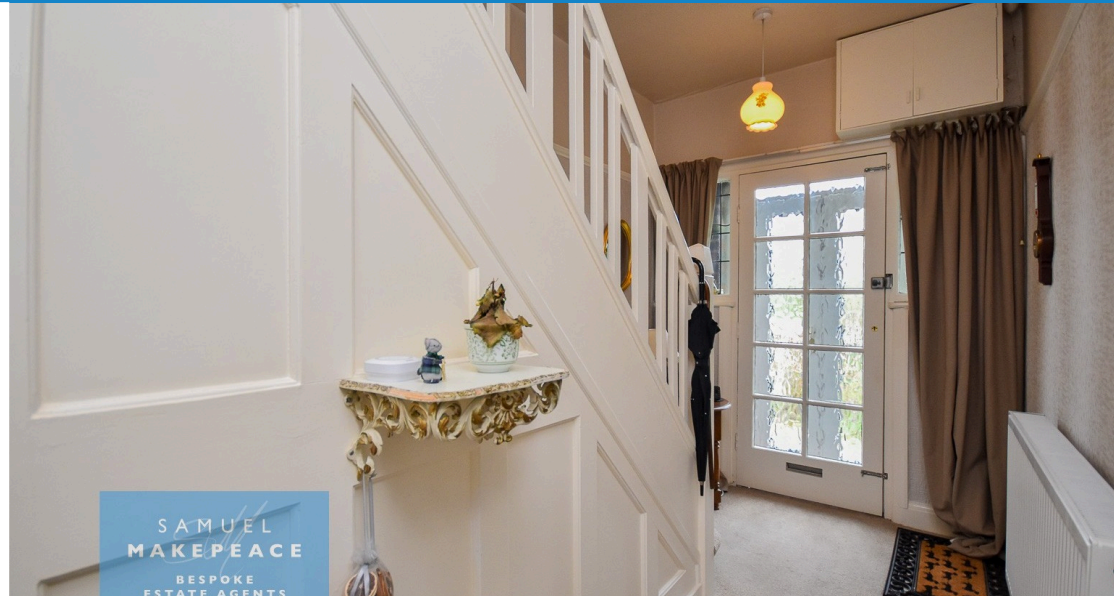


2

Receptions



- A CHAIN-FREE MATURE SEMI-DETACHED HOME
- PRIME POSITION ON NEWCASTLE ROAD, CHESHIRE
- GENEROUS PLOT WITH EXCELLENT POTENTIAL FOR EXTENSION (SUBJECT TO CONSENT)
- FULL OF CHARACTER WITH IMPRESSIVE ENTRANCE HALL AND STORM PORCH
- TWO SPACIOUS RECEPTION ROOMS, INCLUDING BAY-FRONTED LIVING ROOM
- KITCHEN REQUIRING MODERNISATION WITH SCOPE FOR OPEN-PLAN LIVING
-



Like the fleeting bloom of lilac that marks the arrival of spring, opportunities such as this are rare, captivating, and not to be missed. Set behind a generous frontage on Newcastle Road, this mature semi-detached residence offers a home rich in character and possibility—ready to be shaped into something truly special.

Occupying a prime position on Newcastle Road, Balterley, Cheshire, this chain-free, mature semi-detached residence offers an outstanding opportunity to create a truly exceptional family home. Rich in character, generous in scale and set on an enviable plot, this is far more than a property – it is a lifestyle opportunity ready to be realised.

From the moment you arrive, the home makes a lasting impression. A charming storm porch leads into an elegant entrance hall, immediately highlighting the property's period appeal. Two spacious reception rooms provide versatility for modern living: the front reception room is bright and welcoming, enhanced by a beautiful bay window, while the rear living room offers a more intimate and cosy setting. The kitchen, while in need of updating, presents an exciting blank canvas. With its already generous proportions, there is superb potential to reconfigure or extend (subject to the necessary permissions) to create a stunning open-plan kitchen, dining and family space – the true centrepiece of contemporary living. A cloakroom and understairs WC add everyday practicality while maintaining the home's charm. Upstairs, three well-proportioned bedrooms continue the sense of space and individuality, all served by a bathroom that, although currently functional, offers excellent scope for modernisation.

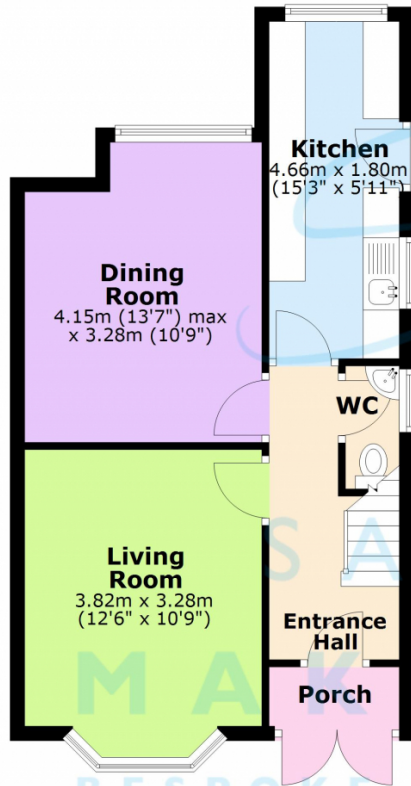
Externally, the property truly excels. With ample parking, lawned gardens and patio areas, the plot offers both immediate enjoyment and future potential, including scope for extension or further development (subject to consent). It is a setting perfectly suited to both entertaining and relaxation.

With vision and thoughtful enhancement, this home has the potential to become one of the finest properties in the area.

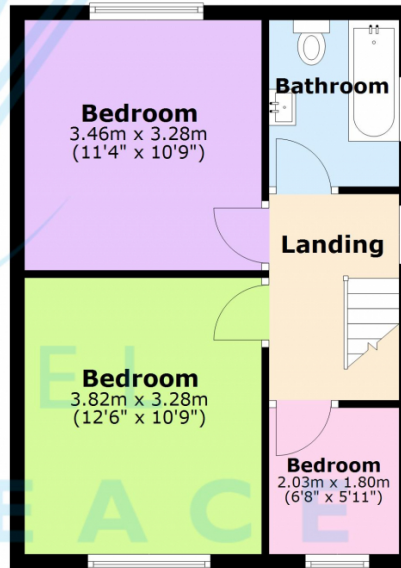
To arrange your viewing, contact Samuel Makepeace Bespoke Estate Agents today – opportunities like this rarely remain available for long.



Ground Floor



First Floor



Total area: approx. 82.5 sq. metres (888.4 sq. feet)

Floorplans are provided as a guide only. All measurements are not to be relied upon. To confirm any measurements and layouts you must check yourself. Samuel Makepeace Bespoke Estate Agents do not accept any liability for the accuracy of this.

Plan produced using PlanUp.



Scan me for more info

