



6 Colworth Road, Sharnbrook, Bedford, MK44 1ET



6 Colworth Road
Sharnbrook
Bedford
MK44 1ET

Price £650,000

Extended detached family
home offering a multi-
generational opportunity...

Entrance hall

Cloakroom

Large living room

Kitchen and utility room

Dining room

Snug/family room

Study

Ground floor shower room

Playroom/fifth bedroom

Four further bedrooms

Family bathroom

Off road parking

Gardens

- Council Tax Band F
- Energy Efficiency Rating D



With flexible accommodation that lends itself to spacious family living...



This is an excellent opportunity to acquire a well extended four/five-bedroom detached home with flexible accommodation that lends itself to both spacious family living as well as the opportunity to accommodate multi-generational living within a self-contained ground floor area.

One hesitates to use the word deceptive but it really applies here. There is a spacious entrance hall with a cloakroom off and stairs rising to the first floor.

The ground floor accommodation then offers a large front to back living room, a kitchen that opens in to the dining room extension, a family room/snug, a study, a ground floor shower room, a utility room and a playroom/fifth bedroom. The last five of these could easily make a self-contained annex and

by having independent access too, the area lends itself to home workers who have visitors.

The first floor offers three double bedrooms, a single bedroom and a family bathroom with a four-piece suite.

Additional benefits include gas fired central heating, double glazing and not one but three fibre broadband options.

Externally there is generous off road parking provision at the front and an established terraced rear garden with patio.

Sharnbrook is located just nine miles to the north of Bedford with easy access from the A6 and easy access to Bedford's excellent network of roads allowing connections to the M1, A1, Milton Keynes, Cambridge and other important employment and recreational centres.

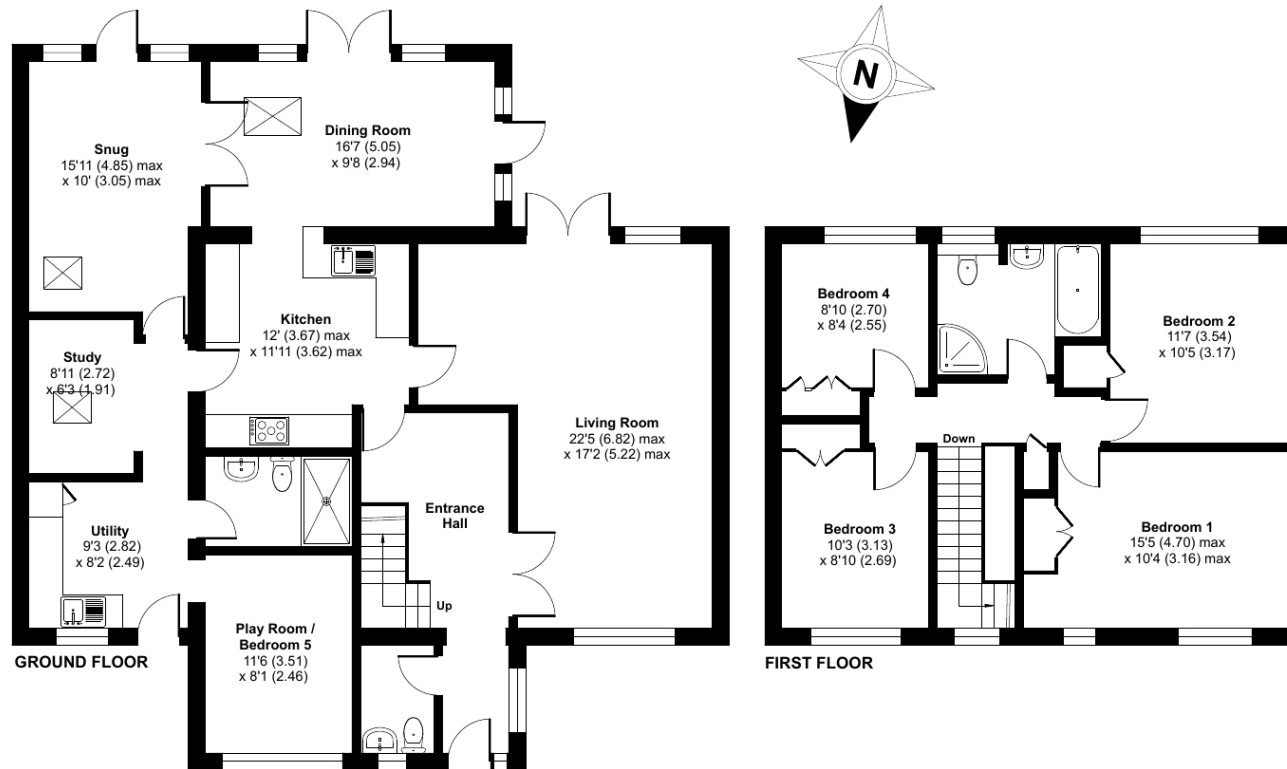
Bedford's mainline railway station offers fast and regular services to London's St Pancras. There are both Primary and Secondary schools within the village and the Harpur Trust schools at Bedford.



6 Colworth Road, Sharnbrook, Bedford, MK44 1E

Approximate Area = 1983 sq ft / 184.2 sq m

For identification only - Not to scale



 Floor plan produced in accordance with RICS Property Measurement 2nd Edition, Incorporating International Property Measurement Standards (IPMS2 Residential). © ncthecom 2026. Produced for Lane & Holmes. REF: 1436724