



Hopton Road, SW16

£1,800 PCM

Located in close proximity to many transport links and amenities is this spacious split level Victorian conversion flat. Occupying the top two floors, the property has a large reception room, a separate

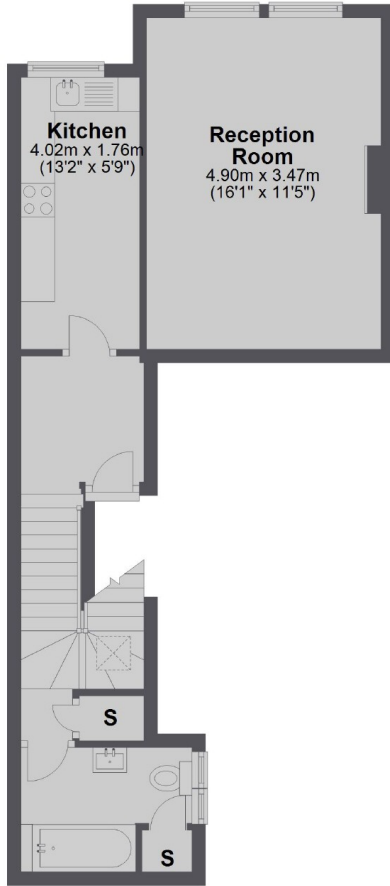
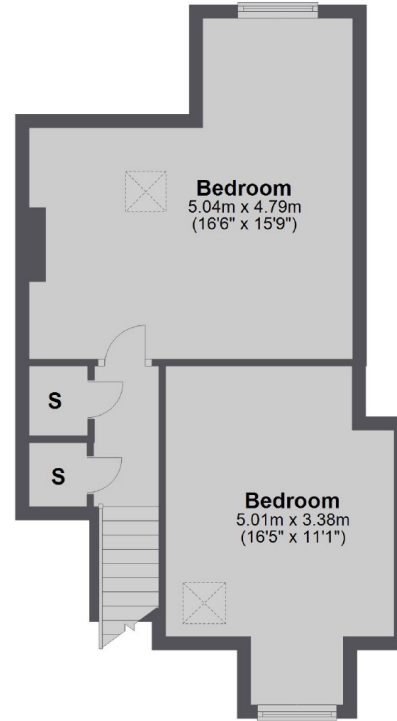
- Top Floor Conversion Flat
- Split Level
- Two Double Bedrooms
- Private Section Of A Garden
- Dishwasher
- Close To Streatham Train Station

For further information on the costs associated with renting a property, please pop into our office or visit our website.



Streatham train station is a short distance away, along with a Tesco superstore, leisure centre and a range of independent cafés and pubs. Streatham Common can also be found at the end of the road.



First Floor**Second Floor**

Total area: approx. 78.4 sq. metres (844.3 sq. feet)

Jacksons Streatham
1-3 De Montfort Parade
Streatham High Road
Streatham
London
SW16 1BU

Energy Rating: D We aim to make our particulars both accurate and reliable. However they are not guaranteed; nor do they form part of an offer or contract. If you require clarification on any points then please contact us, especially if you're traveling some distance to view. Please note that appliances and heating systems have not been tested and therefore no warranties can be given as to their good working order.