



Lloyd Street

Offers in the region of £140,000

- No onward chain
- Generous enclosed rear garden offering excellent outdoor space
- Well-proportioned living room
- Close to excellent transport links
- Two-Bedroom Mid-Terrace Property
- EPC Rating: C



Pinkmove

01633 746088
team@pinkmove.co.uk

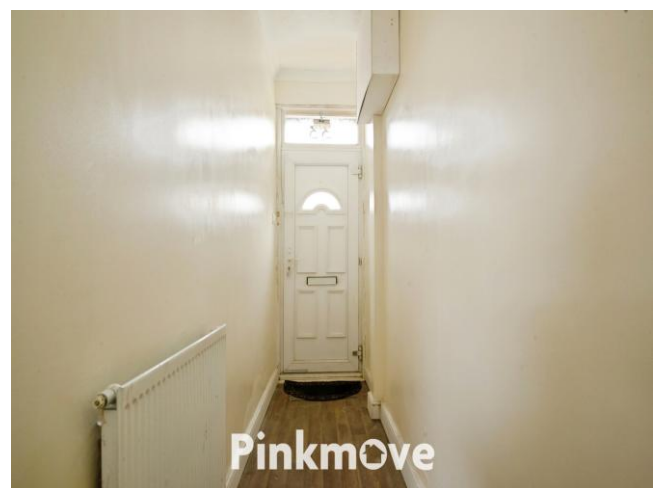


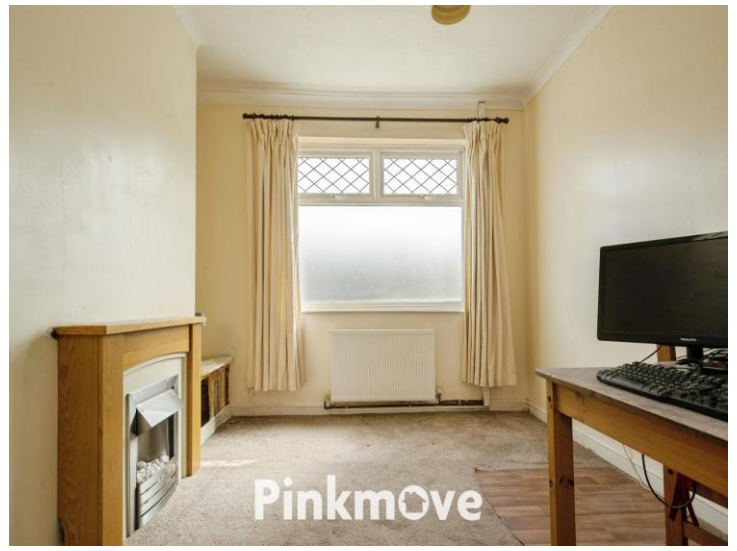
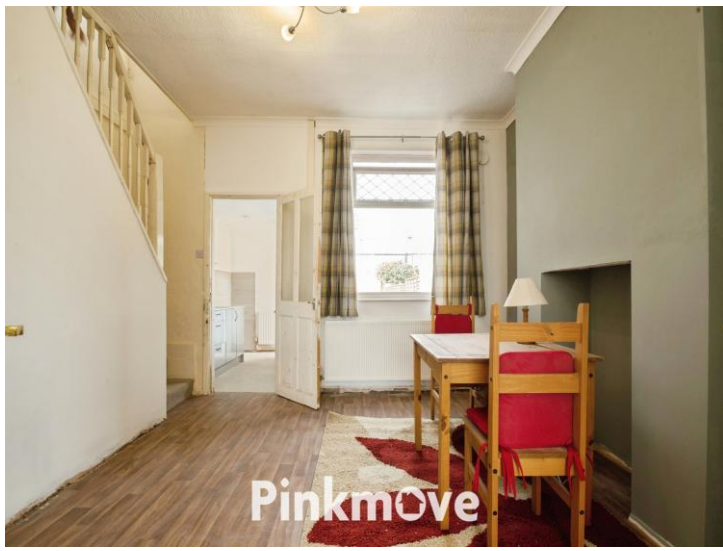
About the property

Tucked away on a quiet side street with no through traffic, ample on-street parking and a park at the end of the road, this well-located two-bedroom mid-terrace property offers excellent access to Newport City Centre, the M4 motorway and the popular Spytt Retail Park, making it a convenient choice for a range of buyers.

Recently decorated throughout the property, the ground floor accommodation comprises a welcoming entrance hallway with under-stairs cupboard, leading to a comfortable living room with ample space for both seating and dining. Also on this level is a fitted kitchen which opens onto the rear patio and garden, along with a downstairs bathroom complete with WC. To the rear, the property benefits from a particularly long, level and low-maintenance garden, providing generous outdoor space ideal for relaxation or entertaining.

The first floor offers two well-proportioned bedrooms, both providing practical and comfortable accommodation. This property would make an ideal purchase for first-time buyers or investors alike, offering strong transport links and everyday convenience for family life in a popular Newport location.





Accommodation

Lounge

Dining Room

Kitchen

Bathroom

Bedroom 1

Bedroom 2

Floorplan



Total floor area 72.7 sq.m. (782 sq.ft.) approx

This floor plan is for illustrative purposes only. It is not drawn to scale. Any measurements, floor areas (including any total floor area), openings and orientation are approximate. No details are guaranteed, they cannot be relied upon for any purpose and they do not form part of any agreement. No liability is taken for any error, omission or misstatement. A party must rely upon its own inspection(s). Powered by www.localagent.com

Pinkmove

Important Information

Note while we endeavour to make our sales details accurate and reliable, if there is any point which is of particular interest to you, please contact the office and we will be pleased to confirm the position for you. We have not personally tested any apparatus, equipment, fixtures, fittings or services and cannot verify they are in working order or fit for their purposes. Nothing in these particulars is intended to indicate that carpets or curtains, furnishings or fittings, electrical goods (whether wired or not). Gas fires or light fittings or any other fixtures not expressly included form part of the property offered for sale. This computer generated Floorplan, if applicable, is intended as a general guide to the layout and design of the property. It is not to scale and should not be relied upon for dimensions. Tenure: We cannot confirm the tenure of the property as we have not had access to the legal documents. The buyer is advised to obtain verification from their solicitor or surveyor.

Peter Alan Limited is registered in England and Wales under company number 2073153, Registered Office is Cumbria House, 16-20 Hockliffe Street, Leighton Buzzard, Bedfordshire, LU7 1GN. VAT Registration Number is 500 2481 05. For activities relating to regulated mortgages and non-investment insurance contracts, Peter Alan Limited is an appointed representative of Connells Limited which is authorised and regulated by the Financial Conduct Authority. Connells Limited's Financial Services Register number is 302221. Most buy-to-let

