



## Willesden Lane, NW6 £1,850 Per Month

AVAILABLE TO LET is this immaculately presented one bedroom Ground Floor Flat, set within this well maintained block, situated in Willesden Green.

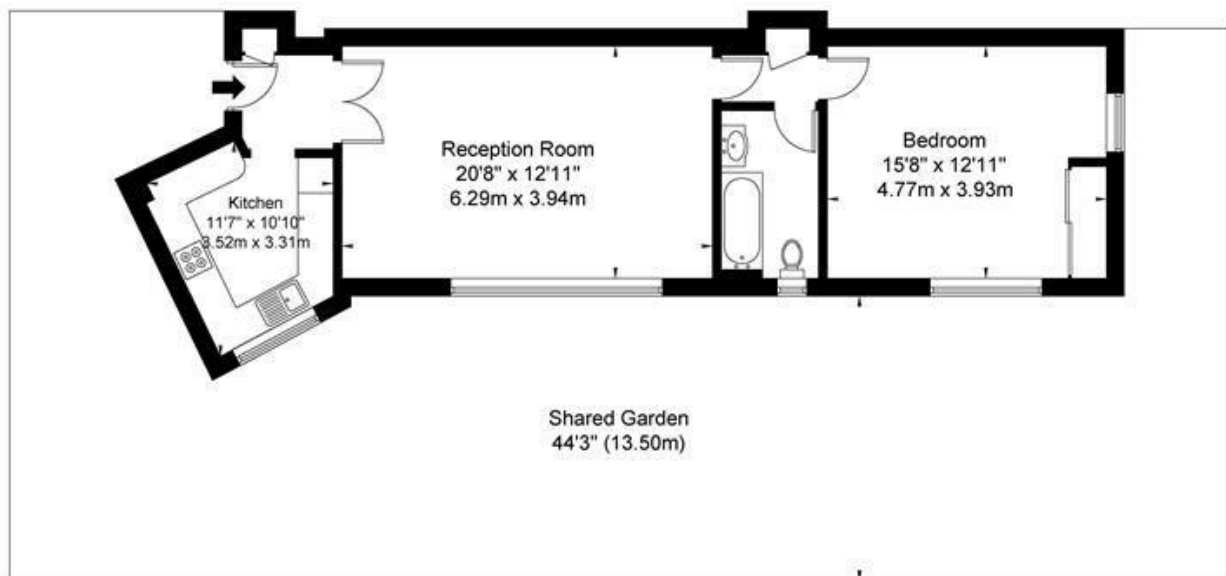
- AVAILABLE TO LET NOW
- Ground Floor 1 bedroom, 1 bathroom apartment
- Bright and airy reception room
- Separate kitchen with fitted appliances
- Large bedroom with fitted wardrobes
- West facing patio & vibrant communal gardens
- Transport includes Willesden Green (Jubilee-Zone 2)
- Council Tax: Brent (C)
- Deposit: £2,134
- Viewing is highly recommended



020 8450 9377 - 020 8459 1133  
rentals@cameronsstiff.co.uk

## Bramerton Court, Willesden Lane, NW6

Approx Gross Internal Area = 63.0 sq m / 678 sq ft



Ground Floor

The Floor plan is not to scale and measurements and areas shown are approximate and therefore should be used for illustrative purposes only. The plan has been prepared in accordance with the RICS code of Measuring Practice and whilst we have confidence in the information produced it must not be relied on. If there is any aspect of particular importance, you should carry out or commission your own inspection of the property.

**EPC: C**

Ref: 18740250